

Alaska Native K-12 Education Indicators

Statewide

***Prepared for:
First Alaskans Institute
Alaska Native Policy Center***

Prepared by:



Juneau Anchorage

***This document contains pages i through viii and
1 through 32 of the full report.
Please visit <http://www.firstalaskans.org>
for a full copy of the report.***

***October 2003
Second Printing March 2004***

Introduction

This executive summary to the *Alaska Native K-12 Education Indicators* provides statewide summary information on thirteen priority topics that are covered in substantially greater detail in the body of the main report document. The main report also includes detail on all topics by Alaska Native geographic region and is supplemented by a statistical appendix with further support data.

Population

For the Census 2000, 17.2 percent of the Alaska population identified themselves as Alaska Native alone or in combination with some other race. Alaska Natives number 107,682 out of a total population of 626,932. Compared to their proportion of the overall population, Alaska Natives represent a significantly higher percentage of Alaska's school age children (23.0 percent) and an even higher percentage of Alaska children enrolled in school (23.7 percent). The Alaska Native community has a significantly higher stake in the performance of Alaska's schools. Over one-third (34.3 percent) of Alaska Natives are of school age, compared to one-fourth (25.6 percent) of the overall Alaska population.

School Inventory

There were 502 schools statewide, including correspondence schools, in the 2002-2003 school year. School enrollment was greatest in the Cook Inlet region with 175 schools and 73,675 students. The Doyon region followed in second place with 82 schools and 24,073 students, and the Sealaska region rounded out the top three spots with 69 schools and 13,425 students. Total enrollment for the year was 134,364 which includes Native enrollment of 31,873.

Number of Schools and Enrollment for 2002-2003 School Year

Alaska Native Region	Number of Schools	Total Enrollment
<i>Ahtna</i>	12	1,000
<i>Aleut</i>	14	888
<i>Arctic Slope</i>	10	2,115
<i>Bering Straits</i>	19	2,497
<i>Bristol Bay</i>	28	1,976
<i>Calista</i>	55	7,173
<i>Chugach</i>	9	1,555
<i>Cook Inlet</i>	175	73,675
<i>Doyon</i>	82	24,073
<i>Koniag</i>	14	2,754
<i>NANA</i>	13	2,172
<i>Sealaska</i>	69	13,425
Statewide Totals	502	134,364

Educators

There are 52 school districts in the state with one superintendent for each, 344 principals statewide, and 8,325 teachers for the 2002-2003 school year including part-time and substitute teachers. Alaska Natives represent less than five (4.6) percent of the total educators in the state, or 401 Alaska Natives out of 8,721 total educators. This compares to Alaska Native student enrollment of 23.7 percent of the state total.

Alaska Native representation includes 5.8 percent of superintendents, 3.8 percent of principals, and 4.6 percent of teachers.

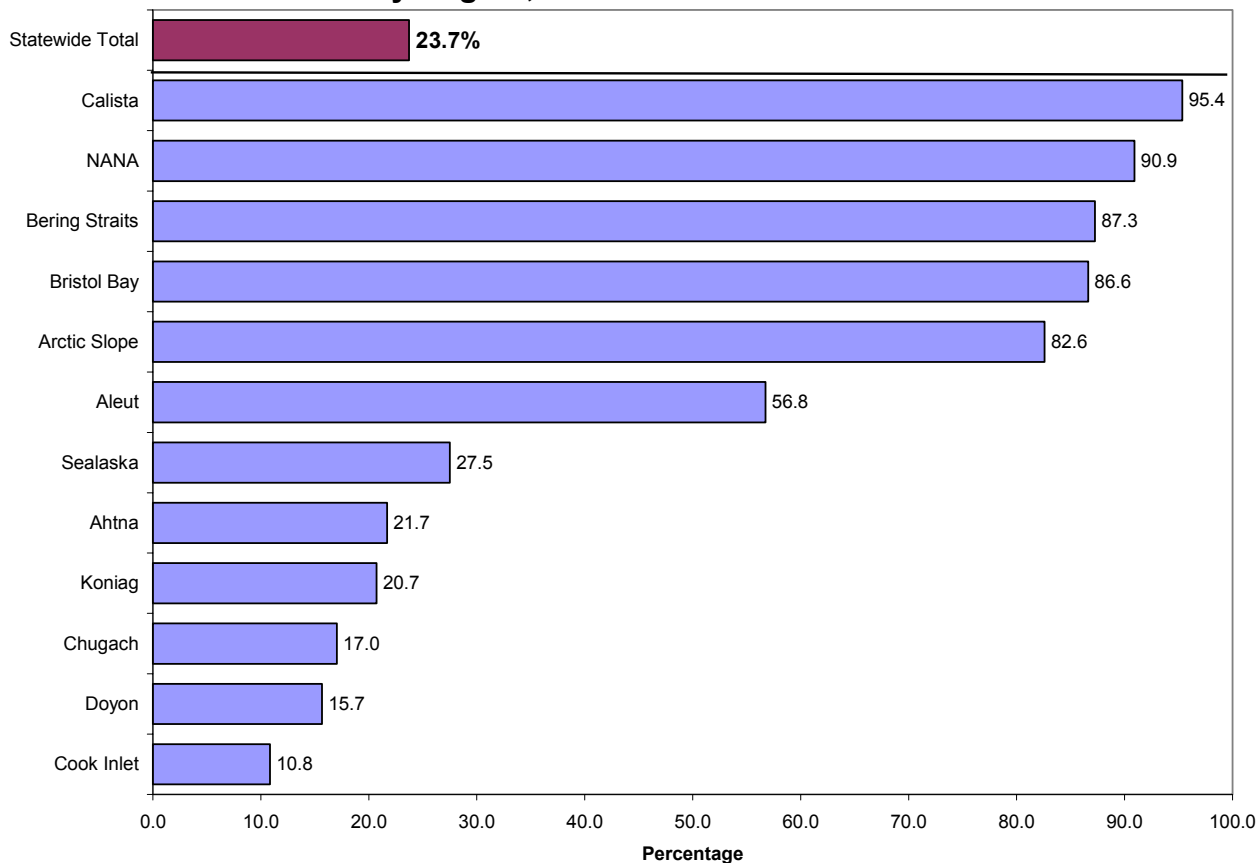
There is little difference in the average salary levels of Alaska Native education professionals when compared to the statewide averages for superintendents, principals, and teachers.

Enrollment

There were 31,873 Alaska Native students enrolled out of a statewide total of 134,364 students for the 2002-2003 school year, representing 23.7 percent of the total student population.

Schools located in the Arctic Slope, Bering Straits, Bristol Bay, Calista, and NANA geographic regions have Native student enrollment percentages of greater than 80 percent. The Aleut region also has a majority of Native enrollment (57 percent). Schools located in the Cook Inlet region have the greatest number of Alaska Native students with 7,985 students, followed by the Calista region with 6,840 students.

Alaska Native Student Enrollment as Percent of Total Enrollment By Region, 2002-2003 School Year



Source: State of Alaska Department of Education and Early Development, 2002-2003 school year. Native students are displayed as a percent of total students.

Student/Teacher Ratios

The average statewide student/teacher ratio is 15.4 students to one teacher. (Correspondence and Cyber school students are not included in this average.)

Schools located in the Cook Inlet region have a student/teacher ratio of 16.7:1 – greater than the statewide average. The Doyon region’s student/teacher ratio is the same as the statewide average (15.4:1). The Cook Inlet and Doyon regions include the large urban concentrations of Anchorage and Fairbanks.

Arctic Slope (ratio of 10:1), Aleut (10.5:1), and Bristol Bay (10.9:1) have the lowest student/teacher ratios in the state.

Education Attainment

Alaska Natives are gaining in education attainment, as evidenced by a comparison by the University of Minnesota of 1990 and 2000 census information. Comparing 2000 to 1990, a higher percentage of Alaska Natives hold college degrees (4 percent versus 3 percent), attended some college (14 percent versus 12 percent), and

graduated from high school (42 percent versus 38 percent). Fewer Alaska Natives (8 percent versus 4 percent) have no schooling.

Adequate Yearly Progress

Holding schools accountable for the performance of all students is a cornerstone of the No Child Left Behind Act. Standardized test results, participation in the testing, and graduation rates form the basis for measuring Adequate Yearly Progress. The goal is to bring all students to academic proficiency by the school year 2013-2014. The test scores used for determining AYP are the Alaska Benchmark Exams for grades 3, 6, and 8; the High School Graduation Qualifying Exam at grade 10; and the CAT-6 (TerraNova) tests in grades 4, 5, 7, and 9.

Schools not meeting AYP goals for the first time are called Level 1 schools, the second time they are called Level 2 schools and so on to Level 4. Different consequences apply to schools that receive federal Title I funding; however, all Level 1 schools need to inform parents about their AYP status, and develop and implement a plan for improvement.

There are 31 ways to measure whether a school is making Adequate Yearly Progress. Schools must have 95 percent of the student enrollment complete the reading, writing, and math portions of the test (three measures), each of nine ethnic and socioeconomic groups must be proficient on the reading, writing, and math exams (27 measures), and the final measure of AYP is graduation rates for schools including 12th grade. All other schools are measured using attendance rates. Performance on reading, writing, and math assessments are the main indicators of meeting AYP. In addition, 12th grade graduation rates or attendance standards must be met. Schools with student proficiency in all subjects and socioeconomic groups can still fail to meet AYP if less than 95 percent of the students took the exam.

For the 2002-2003 school year, 205 of the 488 school statewide met all the AYP targets while 283 schools did not meet AYP targets. A few schools have yet to complete their reports.

Regions with the highest proportion of schools making the AYP list are – in order of performance – Ahtna, Aleut, Koniag, Sealaska, Chugach, and Bristol Bay. In all of these regions at least one-half of all schools made the AYP list.

Regions with the lowest proportion of schools making the AYP list – in order of performance – are Calista, Arctic Slope, NANA, Bering Straits, Doyon, and Cook Inlet.

Dropout Rates

A dropout is defined by Alaska Department of Education and Early Development as a student who was enrolled in the school at some time during the school year and left the school at some time during that same school year. School year is defined as the 12-month period beginning with July 1 and ending June 30. In this case, the school year is the 2001-2002 school year (the most recent year of complete data available). Reporting, calculating, and interpreting dropout rates are subject to error and should be viewed with some caution when reported at the regional and school

district level. GED students, for instance are counted as dropouts because it is not a regular diploma by definition provided by the National Center for Education Statistics, part of the U.S. Department of Education. Students who miss an excessive number of days from classes may be counted as dropouts if the school makes the judgment that the number of days missed has affected the student's ability to finish assignments for that school year.

The statewide dropout rate, a combined rate for all students enrolled in 7th through 12th grades for the 2001-2002 school year, was 5.6 percent. There were 61,336 students enrolled in grades 7 through 12 and 3,424 of them dropped out. Alaska Natives have a higher dropout rate than all other students as a group: 8.8 percent compared to 4.7 percent. There were 13,402 Alaska Native students enrolled in grades 7 through 12 and 1,178 of them dropped out. For all other ethnicities, there were 47,934 students enrolled in grades 7 through 12 and 2,246 of them dropped out.

Alaska Natives comprise 22 percent of the enrollment in grades 7 through 12, yet represent 25.6 percent of the students who drop out of school during this time. Dropout rates are highest in the Calista, Ahtna, Cook Inlet, and Doyon regions and lowest in the Aleut, Bristol Bay, Chugach, and Koniag regions.

Attendance Rates

The statewide average attendance rate for all students was 92.9 percent for the school year 2001-2002. Koniag, Doyon, Ahtna, and Chugach region schools had the highest attendance rate at 93.5 percent and above. NANA, Arctic Slope, Bering Straits, and Calista had the lowest rates – between 87.6 and 90.6 percent.

DEED measures Alaska attendance rates by taking the sum of all days present for all students in a school for the year and dividing this by the sum of all days present and all days absent for all students in a school for the year. This allows the school to account for enrollments and dropouts that occur during the school year. Attendance rate information was only collected at the school level up until the 2002-2003 school year. The information is not available by ethnicity and is not yet available for the 2002-2003 school year.

Graduation Rates

The graduation rate information for the school year 2002-2003 is not yet available. In the school year 2001-2002, Alaska Native students graduated at a slightly lower rate (81.0 percent) than all other students, who graduated at a rate of 84.6 percent. Just this year, the DEED went to a cohort method where they will have to incorporate four years of information. This may be a problem when data is finally released because historical information does not include all subgroups.

The current method used by DEED for calculating graduation rates results in some statistical difficulties when rates are expressed by region and school. Readers are cautioned that the results may not match what is commonly perceived as graduation rates. With this caution, the past method of calculating graduation rates (until 2002-2003) was to divide the number of graduates (regular diploma recipients) by the number of 12th grade students that were enrolled on the last day of school. Students

receiving Certificates of Attendance are not counted as graduates but are counted in the denominator if they were enrolled on the last day.

Special Education Students

For the 2002-2003 school year, there were 18,129 students with disabilities enrolled statewide. Thirty percent (5,433) of students with disabilities are Alaska Native, according to the Department of Education and Early Development. Statewide, 13.5 percent of all students are considered as having disabilities: 17.0 percent of Alaska Native students and 9.5 percent of all non-Native students.

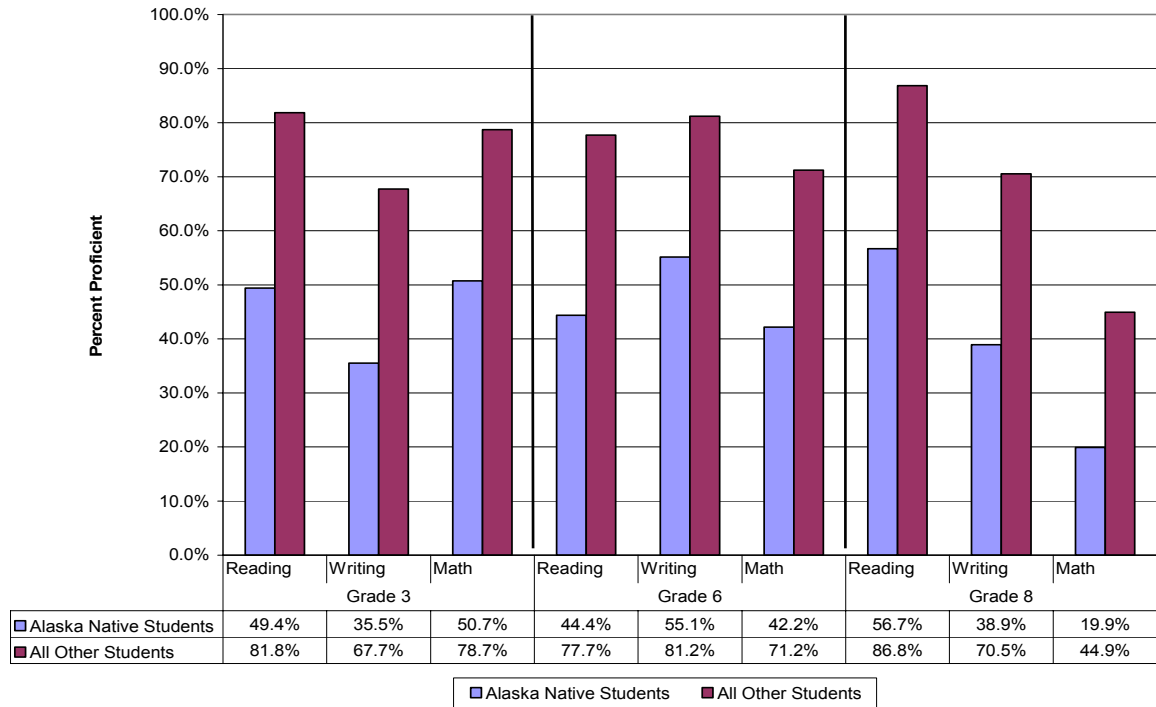
Regions with the highest percentages of students classified with a disability were Ahtna, Koniag, Cook Inlet, Bristol Bay, and Chugach with rates of 14.3 to 17.1 percent. Regions with the lowest percentages of students classified with disabilities were NANA, Arctic Slope, Doyon, Calista, and Aleut with percentages from 10.2 to 12.8 percent of all enrolled students.

Benchmarks

The Alaska Benchmark Examinations measure whether students are achieving statewide academic standards in reading, writing, and math. Benchmark assessments results are not published when less than five students are tested at a grade level or two or fewer students are reported in an individual cell. (An example of an individual cell is the grade 3 students taking the reading exam.) Percentages reported are based on the total number of students tested, not the number of students enrolled in the grade. See the Appendix for a complete list of districts with reportable subjects by grade and the total number of students tested.

For the school year of 2002-2003, Alaska set a starting point of 64.03 percent of students who must show proficiency in the language arts: reading and writing. The state is combining students' scores on reading and writing tests to create one language arts score. The math target is 54.86 percent of students who must show proficiency. Statewide, significantly lower percentages of Alaska Native students were proficient in each of the three subjects and at each of the three grade levels when compared to all other students.

Statewide School Benchmark Results 2002-2003 School Year



Source: State of Alaska Department of Education and Early Development.

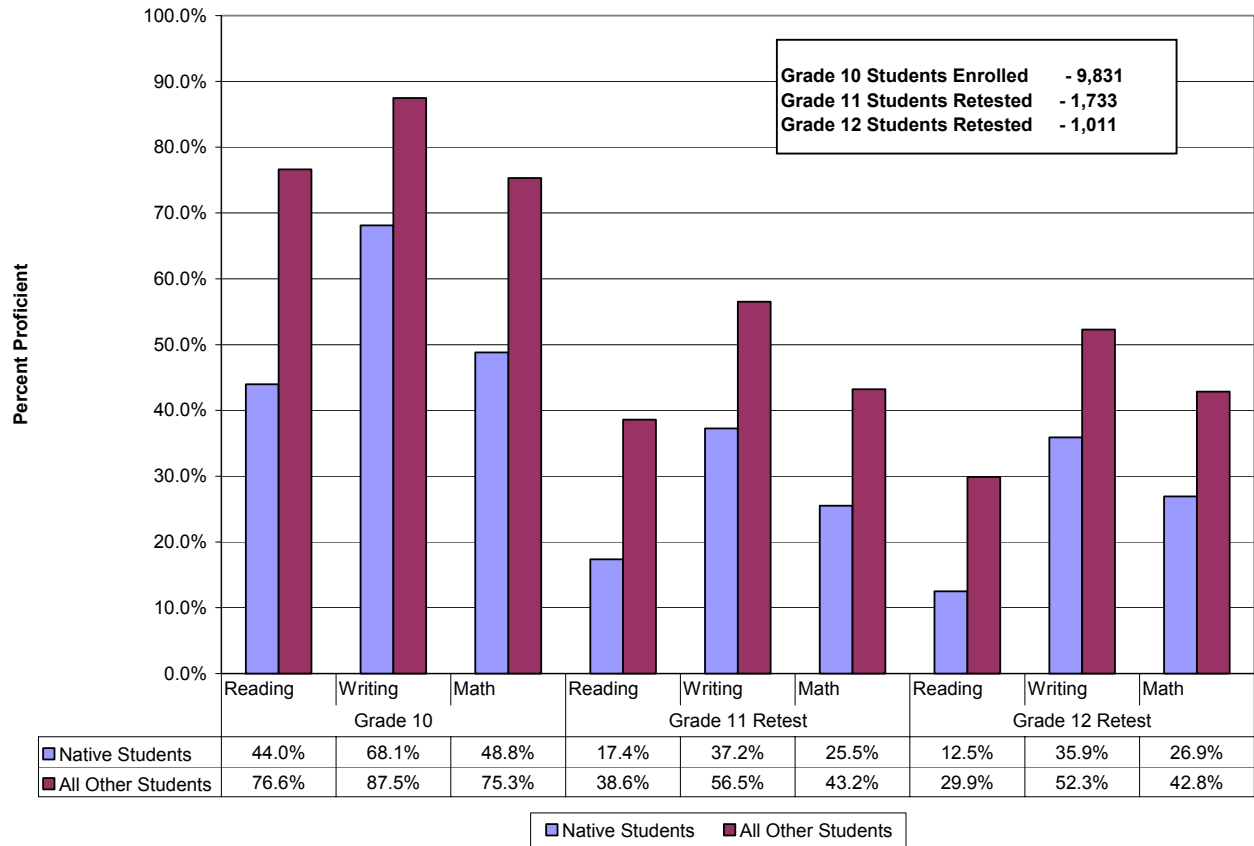
High School Graduation Qualifying Exam

Students take the Alaska Benchmark Examinations in three different grades during their public school careers. The Benchmark Examinations are designed to tell parents and educators if their children are making sufficient progress toward passing the high school exam, which also tests students in reading, writing, and mathematics.

Students are required to pass the Alaska High School Graduation Qualifying Examination in order to receive a high school diploma. Students can begin taking the exam in their sophomore year and are eligible to retake the exams as juniors and seniors for unpassed portions of the exam. Students are offered retests in both the spring and fall of their junior and senior years. Those who do not pass the High School Graduation Qualifying Examination will be denied a diploma and will receive instead a certificate of attendance.

Statewide, significantly lower percentages of Alaska Native students were proficient in each of the three subjects and at each of the grade levels when compared to all other students.

Statewide High School Qualifying Exam Proficiency Results 2002-2003 School Year



Source: State of Alaska Department of Education and Early Development.

The First Alaskans Institute was established as a catalyst for action on major issues and challenges faced by Alaska Natives. Stressing one of its leading priority issues – educational reform – First Alaskans Institute created the Alaska Native Policy Center, a Native think tank. The major tasks of the Alaska Native Policy Center are to perform research and policy analysis and to provide an information clearing house for anyone who needs accurate and factual analysis on Native issues.

Alaska Natives face many challenges in educational performance, attainment, and opportunities. In an effort to understand the Alaska Native condition in all respects, including their educational institutional performance and other socioeconomic conditions affecting this performance, the Alaska Native Policy Center asked the McDowell Group to prepare the *Alaska Native K-12 Education Indicators*.

The indicators report provides a brief overview of Alaska Native educational performance, focusing on:

- *School Profiles*, including graduation rates, dropout rates, and school performance scores.
- *School District Profiles*, including number of schools, geographic and ANCSA region represented, and number of principals, administrators, and superintendents.
- *Teacher Profiles*, including number of teachers employed, teacher/student ratios, ethnicity of teachers, and teacher salary ranges.

This profile is not intended to be a comprehensive documentation of all indicators, but rather to provide selected indicators of Alaska Natives' school environment and performance. McDowell Group developed these indicators at the statewide and regional level.

McDowell Group produced this profile largely by compiling data from the Alaska Department of Education and Early Development (DEED). Special data runs from DEED were requested; however, the majority of the data in this profile was pulled from existing reports produced by DEED, inputted into Excel spreadsheets, and formatted to produce tables and graphics.

There are several limitations in interpreting this data. One significant limitation is that ANCSA Regional Corporation boundaries and school district boundaries do not follow the same geographic lines. For instance, The Mat-Su Borough crosses boundaries with three different Regional Corporations: Cook Inlet, Doyon, and Ahtna. In addition, it should not be assumed that Native students are necessarily shareholders in the Regional Corporation where their school is located.

To sort out the boundary and shareholder location issues, the following methodology was used to determine Regional Corporation educational indicators for purposes of this study:

- If a school district boundary included more than one Regional Corporation geographic area, the educational indicators were included with the Regional Corporation that had the greater number of Alaska Native residents. Adjustments are as follows:
 - Alaska Gateway Schools data is included with Doyon Regional Corporation, even though part of the school district is included in Ahtna Regional Corporation land.
 - Iditarod Schools data is included with Doyon Regional Corporation, even though part of the school district is included in Calista Regional Corporation land.
 - Kenai Peninsula Borough Schools data is included with Cook Inlet Regional Corporation, even though part of the school district is included in Chugach Regional Corporation land.
 - Tanana Schools data is included with Doyon Regional Corporation, even though part of the school district is included in Cook Inlet Regional Corporation land.
 - Denali Borough Schools data is included with Ahtna Regional Corporation, even though part of the school district is included in Doyon Regional Corporation land.
 - Lake and Peninsula Borough Schools data is included with Bristol Bay Regional Corporation, even though part of the school district is included in Koniag Regional Corporation land.
- School District data is presented at the Regional Corporation geographic area level. Individuals living or attending school in geographic regions outside of their home Regional Corporation are included in the Regional Corporation data where they were recorded. This data is not an assessment of the

Regional Corporation shareholders but an assessment of the Native population within a particular geographic area.

- Mt. Edgecumbe High School in Sitka was not included in the Sealaska geographic region but rather is listed separately in this report.
- Alyeska Central School was not included in the Sealaska geographic region but rather is listed separately in this report.

Benchmark exam results are displayed for those schools and districts with releasable data. As of this data gathering, there were approximately 20 schools not yet reporting benchmark exam results. Wherever possible, schools with confidential information have been listed in the text. For a complete list of results that have been included by school, grade, and subject see the Appendix to this report.

High school graduation qualifying exam results are displayed for those ethnicities, grades, and subjects with releasable data. Since the data was gathered by ethnicity, some ethnic groups' exam results were small and considered confidential. This report displays the results for Alaska Natives and all other ethnicities. The all other ethnicities category results may under or over represent actual results depending on which ethnic categories have been suppressed. For instance, if Black and Hispanic groups' data was not released and these groups tend to have results different from the White ethnicity group, the "all other" category results would be displayed for the White ethnicity only and may not represent the "all other" category accurately.

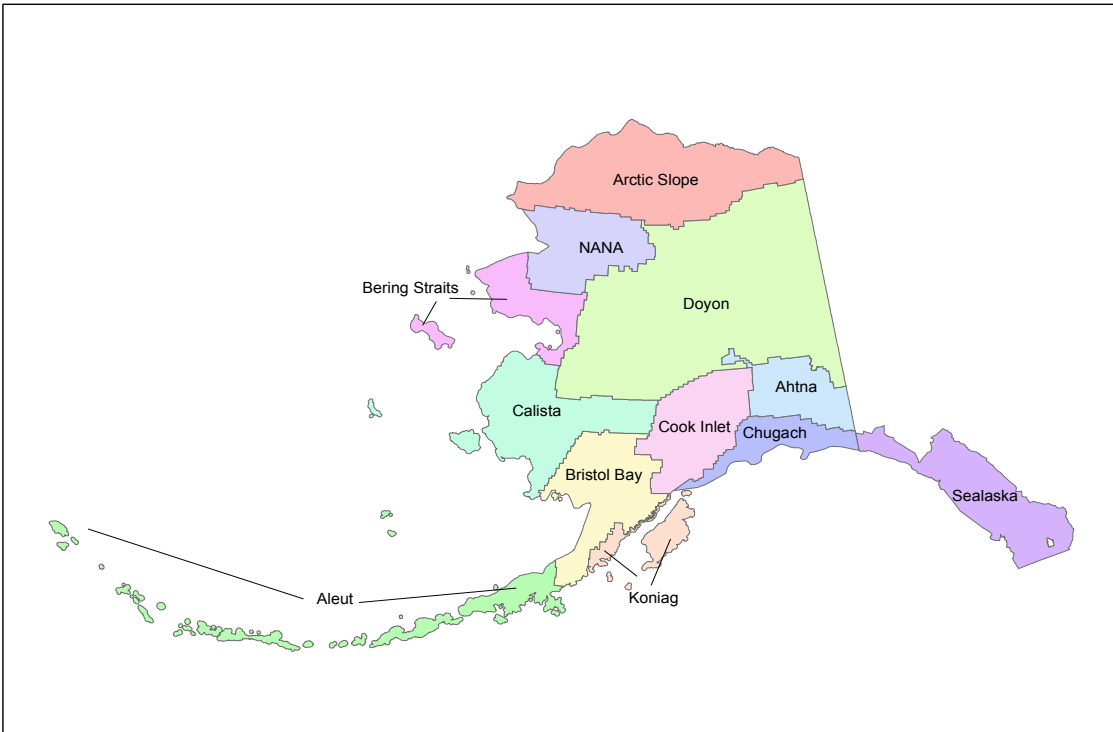
Following is a list of school districts included in each regional geographic area:

Alaska Native Region	School District(s) Included
<i>Ahtna</i>	Copper River Schools Denali Borough Schools
<i>Aleut</i>	Aleutian Region Schools Aleutians East Borough Schools Pribilof Schools Unalaska City Schools
<i>Arctic Slope</i>	North Slope Borough Schools
<i>Bering Straits</i>	Bering Strait Schools Nome City Schools
<i>Bristol Bay</i>	Bristol Bay Borough Schools Dillingham City Schools Lake & Peninsula Borough Schools Southwest Region Schools
<i>Calista</i>	Kashunamiut Schools Kuspuk School District Lower Kuskokwim Schools Lower Yukon Schools Saint Mary's Schools Yup'it Schools
<i>Chugach</i>	Chugach Schools Cordova City Schools Valdez City Schools
<i>Cook Inlet</i>	Anchorage Schools

Alaska Native Region	School District(s) Included
<i>Cook Inlet (continued)</i>	Kenai Peninsula Borough Schools Mat-Su Borough Schools
<i>Doyon</i>	Alaska Gateway Schools Delta/Greely Schools Fairbanks North Star Borough Schools Galena City Schools Iditarod Area Schools Nenana City Schools Tanana Schools Yukon Flats Schools Yukon/Koyukuk Schools
<i>Koniag</i>	Kodiak Island Borough Schools
<i>NANA</i>	Northwest Arctic Borough Schools
<i>Sealaska</i>	Annette Island Schools Chatham Schools Craig City Schools Haines Borough Schools Hoonah City Schools Hydaburg City Schools Juneau Borough Schools Kake City Schools Ketchikan Gateway Borough Schools Klawock City Schools Pelican City Schools Petersburg City Schools Sitka Borough Schools Skagway City Schools Southeast Island Schools Wrangell Public Schools Yakutat Schools
<i>Mt. Edgecumbe High School</i>	
<i>Alyeska Central School</i>	

McDowell Group also obtained U.S. Census Bureau information from Census 2000 for the demographics portion of this report. The Census Bureau sample survey files were administered to about one in six households throughout the U.S. In small population regions, the Census Bureau attempted to reach half of the population. The data contained in these files are from the Census long form and contain information at the community or Census designated place level. In addition, income, housing, and educational level data is presented by ethnicity. From these files, the McDowell group selected population, age, and gender information for Alaska residents who reported ethnicity of Alaska Native alone or in combination with some other race. Since these are sample files, the data is not always complete. In addition, for communities or Census designated places with less than 50 individuals, the Census Bureau suppressed some information.

Following is a map of Alaska showing the Native Regional Corporation geographic boundaries:



Prepared by
Alaska Department of Labor and Workforce Development
Research and Analysis Section
Oct. 2003
Source: 2000 TIGERline Files & ArcView 8.2

Population

More than 17 percent of the Alaska population identified themselves as Alaska Native alone or in combination with some other race for the Census 2000.

**Table 1
Statewide Demographics Profile**

Statewide Demographics Summary				
	Total Population		Alaska Native Alone or in combination with some other race	
	Number	Percent	Number	Percent
Population	626,932		107,682	
Gender				
Male	324,112	51.7	54,256	50.4
Female	302,820	48.3	53,426	49.6
Age				
< 5 years	47,591	7.6	10,918	10.1
5 - 14	110,432	17.6	26,297	24.4
15 - 19	50,094	8.0	10,668	9.9
20 - 34	129,365	20.6	21,872	20.3
35 - 44	114,049	18.2	16,131	15.0
45 - 64	139,702	22.3	15,837	14.7
65 or more years	35,699	5.7	5,959	5.5

Source: U.S. Census Bureau, Census 2000. Total population includes Alaska Natives and in combination with some other race.

The percentage of Alaska Native school age population (ages 5 through 19) is much larger than the percentage of the total school age statewide population, 34.3 percent compared to 25.6 percent.

School Inventory

There were 502 schools statewide, including correspondence schools for the 2002-2003 school year. School enrollment was greatest in the Cook Inlet region with 175 schools and 73,675 students. The Doyon region followed in second place with 82 schools and 24,073 students, and the Sealaska region rounded out the top three spots with 69 schools and 13,425 students. Total enrollment for the 2002-2003 school year was 134,364. (See Table 1.)

Table 2
Number of Schools and Enrollment for 2002-2003 School Year

Alaska Native Region	Number of Schools	Total Enrollment
<i>Ahtna</i>	12	1,000
<i>Aleut</i>	14	888
<i>Arctic Slope</i>	10	2,115
<i>Bering Straits</i>	19	2,497
<i>Bristol Bay</i>	28	1,976
<i>Calista</i>	55	7,173
<i>Chugach</i>	9	1,555
<i>Cook Inlet</i>	175	73,675
<i>Doyon</i>	82	24,073
<i>Koniag</i>	14	2,754
<i>NANA</i>	13	2,172
<i>Sealaska</i>	69	13,425
Statewide Totals	502	134,364

Source: State of Alaska Department of Education and Early Development, 2002-2003 school year. Statewide totals include students at the Alyeska Central School and Mt. Edgecumbe High School. These two schools are not shown in the geographic area totals.

Educators

There are 52 school districts in the state with one superintendent for each, 344 principals statewide, and 8,325 teachers for the 2002-2003 school year. Alaska Natives represent less than 5 percent of the total number of educators in the state while almost 24 percent of the student population is Alaska Native.

Table 3
Alaskan Educators by Ethnicity, 2002-2003

Alaska Educators	Alaska Native	All Other Ethnicities	Total
Superintendents	3	49	52
Principals	13	331	344
Teachers	385	7,940	8,325
Total	401	8,320	8,721
Percent	4.6%	95.4%	

Source: State of Alaska Department of Education and Early Development, 2002-2003 school year.

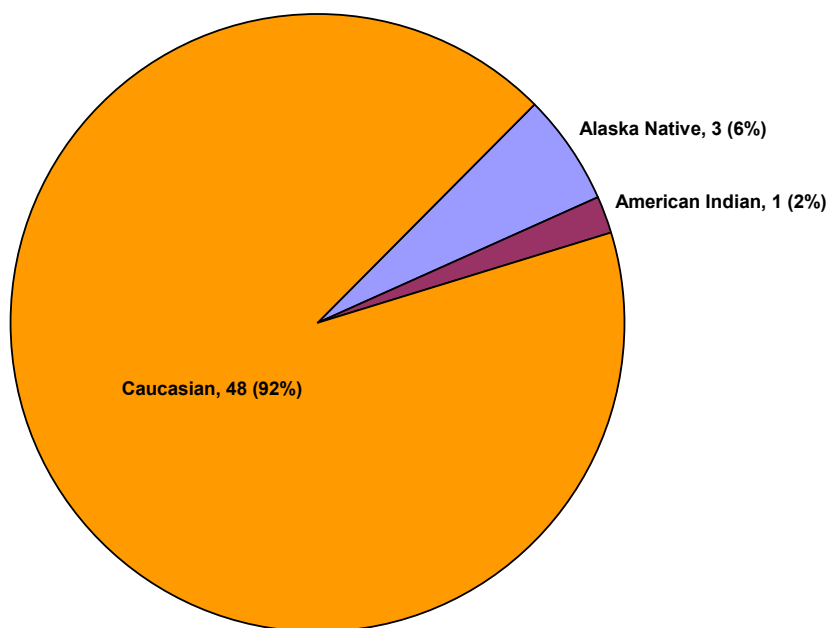
The number of educators and their compensation are discussed as follows for superintendents, principals, and teachers statewide. Average educator's compensation is presented for superintendents, principals, and teachers. While these tables are categorized by ethnicity, caution should be used in comparing salary ranges between ethnicities. Educator compensation is based on a variety of factors that include tenure, educational attainment, and school district.

Superintendents

Number of superintendents employed in Alaska, by ethnicity, are depicted in Figure 1.

- Male superintendents outnumber female superintendents in the state by three to one. There are no female Native superintendents currently employed in Alaska.
- Six percent of all superintendents are Alaska Native males. (See Figure 1.)
- On average male superintendents earn slightly more than female superintendents, \$94,880 compared to \$93,781.

Figure 1
Number and Percent of Superintendents in Alaska by Ethnicity,
2002-2003 School Year

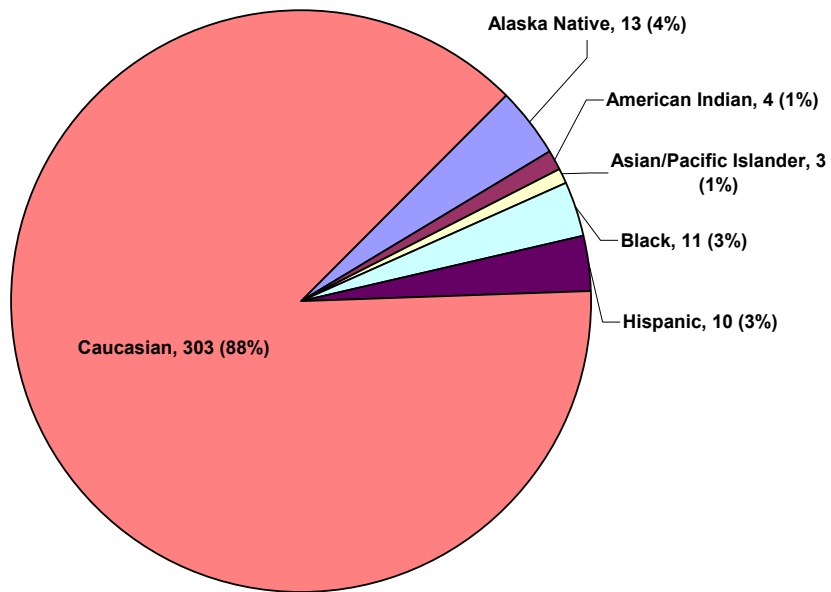


Source: State of Alaska Department of Education and Early Development.

Principals

- Male principals outnumber female principals in the state by almost two to one, 216 male principals compared to 128 female principals. Less than 4 percent of Alaska's 344 principals are Alaska Native. Slightly over 1 percent are American Indian. (See Figure 2.)
- On average male principals earn more than female principals, \$78,312 compared to \$73,953.

Figure 2
Principals in Alaska by Ethnicity, 2002-2003 School Year

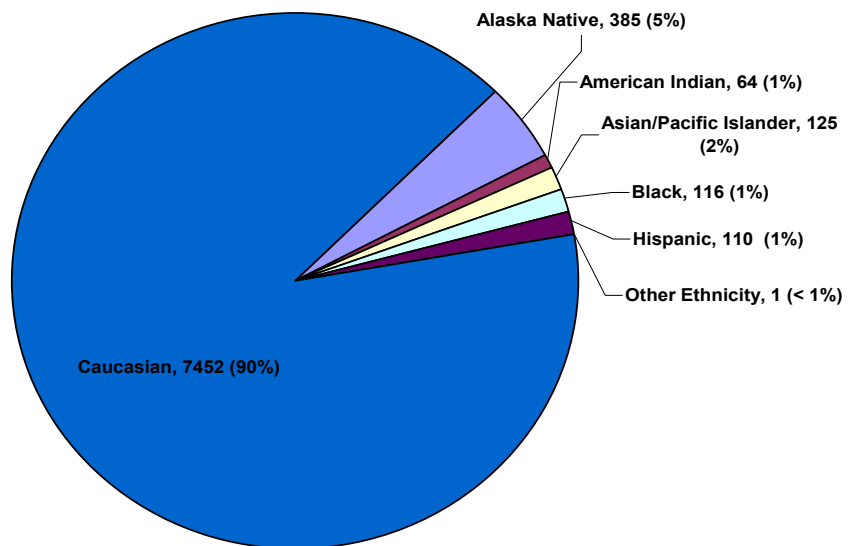


Source: State of Alaska Department of Education and Early Development.

Teachers

- Female teachers outnumber males in the state by more than two to one; 5,770 females teachers compared to 2,555 males. This includes part-time, full-time, and substitute teachers.
- Almost 5 percent of Alaska’s teachers are Alaska Native. American Indian educators make up less than 1 percent of all teachers (See Figure 3).
- On average male teachers earn slightly more than female teachers, \$48,587 compared to \$48,406.

Figure 3
Teachers in Alaska by Ethnicity, 2002-2003 School Year



Source: State of Alaska Department of Education and Early Development. Based on the number of teachers employed and earning wages for the 2002-2003 school year.

Enrollment

Enrollment displayed in this report is the count of students enrolled on October 1, 2002 for the 2002-2003 school year.

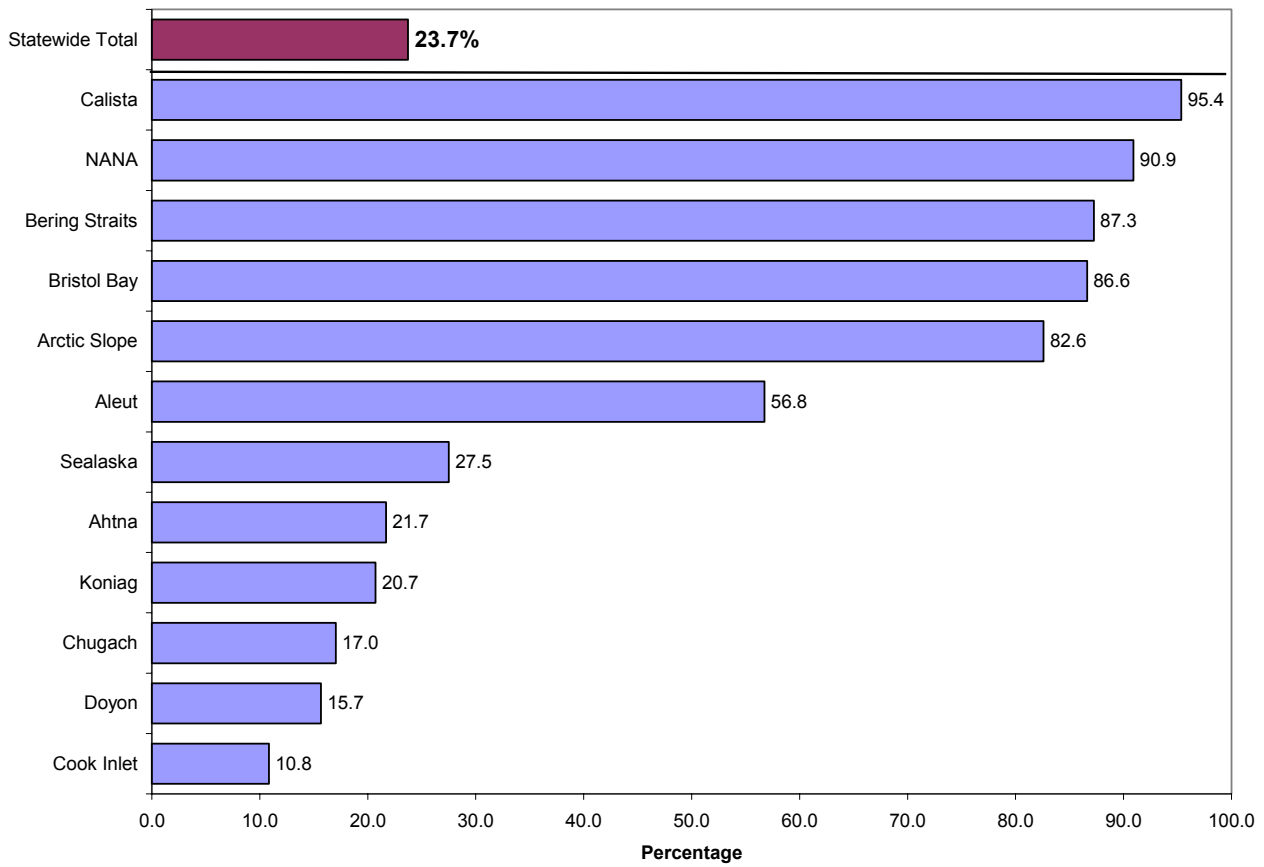
- There were 31,873 Alaska Native students enrolled statewide for the 2002-2003 school year, representing 23.7 percent of the total student population.
- Schools located in the Arctic Slope, Bering Straits, Bristol Bay, Calista, and NANA Regional Corporation areas have Native student enrollment percentages of greater than 80 percent. The Aleut Region also has a majority of Native enrollment (57 percent).
- Schools located in the Cook Inlet region have the greatest number of Alaska Native students with 7,985 students, followed by Calista region with 6,840 students.

Table 4
Student Enrollment by Region – School Year 2002-2003
(Listed in Order of Percent of Enrollment that is Alaska Native)

Alaska Native Region	Alaska Native	Percent Alaska Native	All Other Races	Percent All Other	Total Students
Cook Inlet	7,985	10.8	65,690	89.2	73,675
Doyon	3,768	15.7	20,305	84.3	24,073
Chugach	265	17.0	1,290	83.0	1,555
Koniag	571	20.7	2,183	79.3	2,754
Ahtna	217	21.7	783	78.3	1,000
Sealaska	3,693	27.5	9,732	72.5	13,425
Aleut	504	56.8	384	43.2	888
Arctic Slope	1,747	82.6	368	17.4	2,115
Bristol Bay	1,712	86.6	264	13.4	1,976
Bering Straits	2,179	87.3	318	12.7	2,497
NANA	1,975	90.9	197	9.1	2,172
Calista	6,840	95.4	333	4.6	7,173
Statewide Total	31,873	23.7	102,491	76.3	134,364

Source: State of Alaska Department of Education and Early Development, 2002-2003 school year. Enrollment count taken on October 1, 2002. Statewide totals include students at the Alyeska Central School and Mt. Edgumbe High School. These two schools are not shown in the geographic area totals.

Figure 4
Alaska Native Student Enrollment by Region
2002-2003 School Year
(Native Students as a Percent of Total Enrollment)



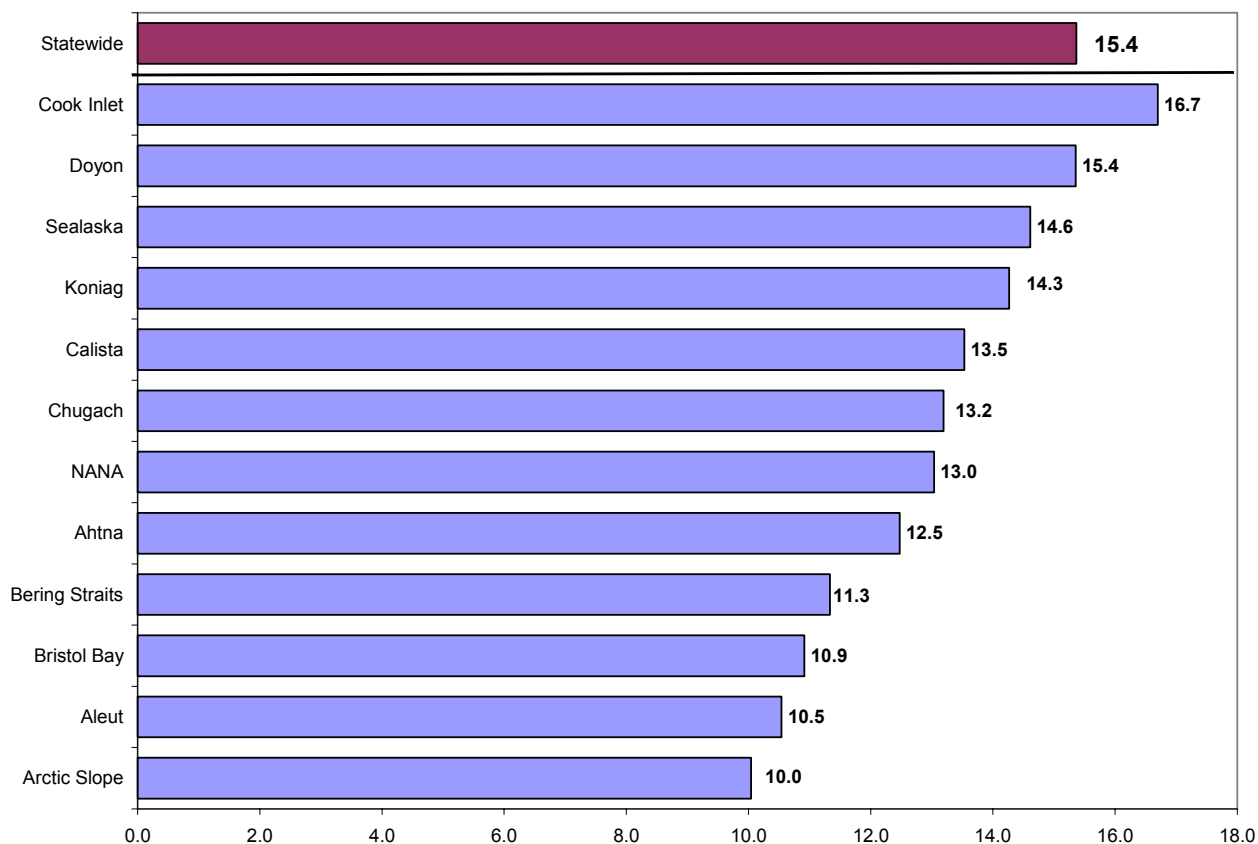
Source: State of Alaska Department of Education and Early Development, 2002-2003 school year.

Student/Teacher Ratios

Student/Teacher ratios displayed in this report were calculated using enrollment numbers of October 1, 2002, subtracting correspondence and cyber schools, and then dividing by the number of full-time equivalent teachers in each of the regions.

- The average number of students compared to teachers statewide is 15.4 students to one teacher. (Correspondence and Cyber school students are not included in this average.)
- Schools located in the Cook Inlet region have student/teacher ratios that are greater than the statewide average: a ratio of 16.7 students to one teacher. The Doyon region's student/teacher ratio is the same as the statewide average (15.4:1). The Cook Inlet and Doyon regions include the large urban concentrations of Anchorage and Fairbanks.
- Arctic Slope (ratio of 10:1), Aleut (10.5:1), and Bristol Bay (10.9:1) have the lowest student/teacher ratio in the state.

Figure 5
Alaska Student/Teacher Ratios by Region
2002-2003 School Year
(Number of Students per Teacher)

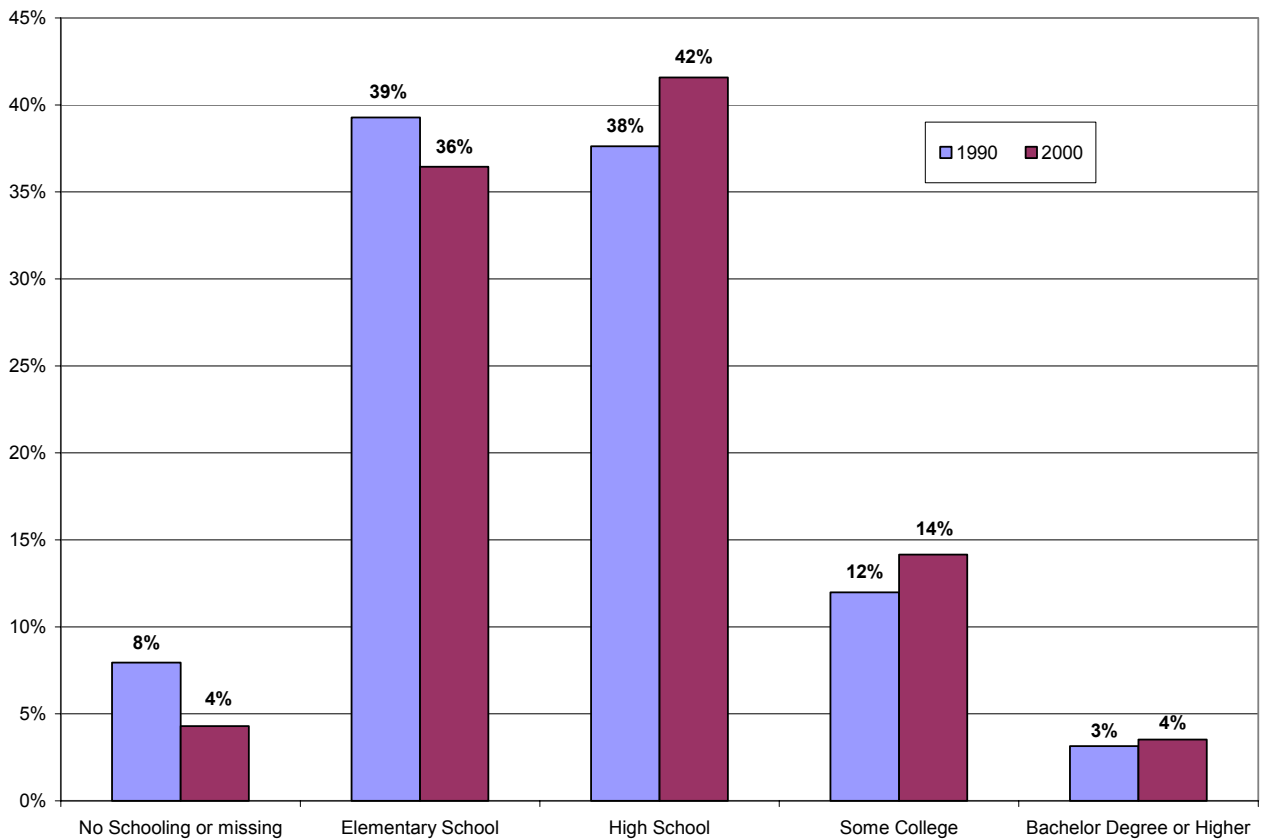


Source: State of Alaska Department of Education and Early Development, 2002-2003 school year. Student/teacher ratios derived by taking enrollment for a district, subtracting out correspondence and cyber schools, and dividing by the number of full-time equivalent teachers recorded in that district.

Education Attainment

The University of Minnesota created a database using Census data samples of the American population over 13 federal censuses. The sample sizes for the data set is small for Alaska Natives; however, comparisons from the 1990 Census to the 2000 Census suggest that Alaska Native educational attainment is on the rise. The percentage of Alaska Natives who reported their highest level of education was elementary school fell from 39 percent to 36 percent. High school education attainment from the 1990 Census was at 38 percent and rose to 42 percent for the 2000 Census. Alaska Natives obtaining some college education or a bachelor degree or higher also rose from the 1990 Census.

Figure 6
Native Educational Attainment – 1990 and 2000 Census



Source: University of Minnesota - Integrated Public Use Microdata Series (IPUMS). This data is obtained from responses to the Census question of "What is the highest degree or level of school this person has COMPLETED?" for persons completing the Census long form.

Adequate Yearly Progress

Holding schools accountable for the performance of all students is a cornerstone of the No Child Left Behind Act. Standardized test results, participation in the testing, and graduation rates form the basis for measuring Adequate Yearly Progress. The goal is to bring all students to academic proficiency by the school year 2013-2014. The test scores used for determining AYP are the Alaska Benchmark Exams for grades 3, 6, and 8; the High School Graduation Qualifying Exam at grade 10; and the CAT-6 (TerraNova) tests in grades 4, 5, 7, and 9.

Schools not meeting AYP goals for the first time are called Level 1 schools, the second time they are called Level 2 schools and so on to Level 4. Different consequences apply to schools that receive federal Title I funding; however, all Level 1 schools need to inform parents about their AYP status, and develop and implement a plan for improvement. There are 31 ways to measure whether a school is making Adequate Yearly Progress. Schools must have 95 percent of the student enrollment complete the reading, writing, and math portions of the test (three measures), each of nine ethnic and socioeconomic groups must be proficient on the reading, writing, and math exams (27 measures), and the final reason to make AYP is graduation rates for schools going through 12th grade or attendance rates for all other schools. Performance on reading, writing, and math assessments are the main indicators of meeting AYP, but graduation rates must be met (or attendance rates if there is not a 12th grade). Schools with student proficiency in all subjects and socioeconomic groups can still fail to meet AYP if less than 95 percent of the students took the exam. Following is a summary by Regional Corporation geographic area of the number of schools making or not making AYP:

Table 5
Number of Schools by Region Making and Not Making AYP
for the School Year 2002-2003

Alaska Native Region	Number of Schools Making AYP	Number of Schools Not Making AYP	Unknown	Total Number of Schools
<i>Ahtna</i>	10	2		12
<i>Aleut</i>	11	2	1	14
<i>Arctic Slope</i>	1	9		10
<i>Bering Straits</i>	5	14		19
<i>Bristol Bay</i>	14	14		28
<i>Calista</i>	5	48	2	55
<i>Chugach</i>	5	4		9
<i>Cook Inlet</i>	72	94	9	175
<i>Doyon</i>	30	50	1	81
<i>Koniag</i>	9	5		14
<i>NANA</i>	2	11		13
<i>Sealaska</i>	40	28	1	69
<i>Alyeska Central School</i>		1		1
<i>Mt. Edgecumbe H.S.</i>	1			1
Statewide Totals	206	282	14	502

Source: State of Alaska Department of Education and Early Development, 2002-2003 school year.

List of Schools Making AYP

Following is a list of the schools by region making Adequate Yearly Progress for the 2002-2003 school year:

Alaska Native Region	District	School
Ahtna	Copper River Schools	<i>Chistochina School - Glennallen Copper Center School - Copper Center Gakona Elementary - Gakona Glennallen Elementary - Glennallen Kenny Lake School - Copper Center Slana School - Slana</i>
	Denali Borough Schools	<i>Anderson School - Anderson Cantwell School - Cantwell Denali Correspondence School - Healy Tri-Valley School - Healy</i>
Aleut	Aleutian Region Schools	<i>Adak School - Adak Nikolski School - Nikolski Yakov E. Netsvetov School - Atka</i>
	Aleutians East Borough Schools	<i>Akutan School - Akutan Cold Bay School - Cold Bay False Pass School - False Pass Nelson Lagoon School - Nelson Lagoon</i>
	Pribilof Schools	<i>St. George School - St. George</i>
	Pribilof Schools (continued)	<i>St. Paul School - St. Paul</i>
	Unalaska City Schools	<i>Unalaska Elementary - Unalaska Unalaska Jr/Sr High School - Unalaska</i>
Arctic Slope	North Slope Borough Schools	<i>Ipalook Elementary - Barrow</i>
Bering Straits	Bering Strait Schools	<i>Unalakleet Schools - Unalakleet Wales School - Wales White Mountain School - White Mountain</i>
	Nome City Schools	<i>Anvil City Science Academy - Nome Nome Youth Facility - Nome</i>
Bristol Bay	Bristol Bay Borough Schools	<i>Bristol Bay High School - Naknek Naknek Elementary - Naknek South Naknek Elementary - South Naknek</i>
	Lake & Peninsula Borough Schools	<i>Chignik Lagoon School - Chignik Lagoon Chignik Lake School - Chignik Lake Dena'ina School - Pedro Bay Egegik School - Egegik Igiugig School - Igiugig Levelock School - Levelock Pilot Point School - Pilot Point Tanalian School - Port Alsworth</i>
	Southwest Region Schools	<i>Clarks Point School - Clarks Point Portage Creek School - Portage Creek Twin Hills School - Twin Hills</i>
Calista	Kuspuk School District	<i>Aniak Middle School - Aniak Auntie Mary Nicoli Elementary - Aniak George Willis Sr. School - Red Devil</i>

Alaska Native Region	District	School
Cook Inlet (continued)	<p data-bbox="610 224 972 275">Kenai Peninsula Borough Schools (continued)</p> <p data-bbox="610 743 847 772">Mat-Su Borough Schools</p>	<p data-bbox="992 224 1312 254"><i>McNeil Canyon Elementary - Homer</i></p> <p data-bbox="992 281 1295 310"><i>Moose Pass School - Moose Pass</i></p> <p data-bbox="992 317 1289 346"><i>Nikolaevsk School - Anchor Point</i></p> <p data-bbox="992 352 1224 382"><i>Ninilchik School - Ninilchik</i></p> <p data-bbox="992 388 1305 417"><i>Port Graham School - Port Graham</i></p> <p data-bbox="992 424 1224 453"><i>Razdolna School - Homer</i></p> <p data-bbox="992 459 1273 489"><i>Redoubt Elementary - Soldotna</i></p> <p data-bbox="992 495 1256 525"><i>Seward High School - Seward</i></p> <p data-bbox="992 531 1273 560"><i>Seward Middle School - Seward</i></p> <p data-bbox="992 567 1273 596"><i>Soldotna Elementary - Soldotna</i></p> <p data-bbox="992 602 1403 632"><i>Soldotna Montessori Charter School - Soldotna</i></p> <p data-bbox="992 638 1256 667"><i>Sterling Elementary - Sterling</i></p> <p data-bbox="992 674 1305 703"><i>Susan B English School - Seldovia</i></p> <p data-bbox="992 709 1289 739"><i>West Homer Elementary - Homer</i></p> <p data-bbox="992 745 1295 774"><i>Academy Charter School - Palmer</i></p> <p data-bbox="992 781 1240 810"><i>Beryozava School - Palmer</i></p> <p data-bbox="992 816 1240 846"><i>Colony High School - Palmer</i></p> <p data-bbox="992 852 1289 882"><i>Finger Lake Elementary - Wasilla</i></p> <p data-bbox="992 888 1256 917"><i>Glacier View School - Palmer</i></p> <p data-bbox="992 924 1273 953"><i>Houston High School - Big Lake</i></p> <p data-bbox="992 959 1240 989"><i>Iditarod Elementary - Wasilla</i></p> <p data-bbox="992 995 1240 1024"><i>Larson Elementary - Wasilla</i></p> <p data-bbox="992 1031 1403 1060"><i>Midnight Sun Family Learning Center - Wasilla</i></p> <p data-bbox="992 1066 1256 1096"><i>Palmer High School - Palmer</i></p> <p data-bbox="992 1102 1256 1131"><i>Sherrod Elementary - Palmer</i></p> <p data-bbox="992 1138 1273 1167"><i>Susitna Valley High - Talkeetna</i></p> <p data-bbox="992 1173 1224 1203"><i>Sutton Elementary - Sutton</i></p> <p data-bbox="992 1209 1256 1239"><i>Swanson Elementary - Palmer</i></p> <p data-bbox="992 1245 1289 1274"><i>Talkeetna Elementary - Talkeetna</i></p> <p data-bbox="992 1281 1370 1310"><i>Trapper Creek Elementary - Trapper Creek</i></p> <p data-bbox="992 1316 1224 1346"><i>Willow Elementary - Willow</i></p>
Doyon	<p data-bbox="610 1350 847 1379">Alaska Gateway Schools</p> <p data-bbox="610 1461 896 1541">Delta/Greely Schools Fairbanks North Star Borough Schools</p>	<p data-bbox="992 1350 1240 1379"><i>Dot Lake School - Dot Lake</i></p> <p data-bbox="992 1386 1289 1415"><i>Eagle Community School - Eagle</i></p> <p data-bbox="992 1421 1256 1451"><i>Tanacross School - Tanacross</i></p> <p data-bbox="992 1457 1370 1486"><i>New Horizons High School - Delta Junction</i></p> <p data-bbox="992 1493 1305 1522"><i>Anderson Elementary - Eielson AFB</i></p> <p data-bbox="992 1528 1305 1558"><i>Anne Wien Elementary - Fairbanks</i></p> <p data-bbox="992 1564 1354 1593"><i>Arctic Light Elementary - Fort Wainwright</i></p> <p data-bbox="992 1600 1386 1629"><i>Ben Eielson Jr/Sr High School - Eielson AFB</i></p> <p data-bbox="992 1635 1240 1665"><i>Joy Elementary - Fairbanks</i></p> <p data-bbox="992 1671 1240 1701"><i>Ladd Elementary - Fairbanks</i></p> <p data-bbox="992 1707 1273 1736"><i>Nordale Elementary - Fairbanks</i></p> <p data-bbox="992 1743 1305 1772"><i>North Pole Elementary - North Pole</i></p> <p data-bbox="992 1778 1305 1808"><i>Pearl Creek Elementary - Fairbanks</i></p> <p data-bbox="992 1814 1256 1843"><i>Salcha Elementary - Fairbanks</i></p> <p data-bbox="992 1850 1305 1879"><i>Two Rivers Elementary - Fairbanks</i></p> <p data-bbox="992 1885 1338 1915"><i>University Park Elementary - Fairbanks</i></p>

Alaska Native Region	District	School
Doyon (continued)	Fairbanks North Star Borough Schools (continued)	<i>Weller Elementary - Fairbanks</i>
		<i>Woodriver Elementary - Fairbanks</i>
	Galena City Schools	<i>Galena Elementary - Galena</i>
		<i>Galena Jr/Sr High School - Galena</i>
	Iditarod Area Schools	<i>Lime Village School - Lime Village - McGrath</i>
		<i>McGrath School - McGrath</i>
		<i>Top of the Kuskokwim School - Nikolai</i>
	Nenana City Schools	<i>Nenana City School - Nenana</i>
	Tanana Schools	<i>Maudrey J. Sommer School - Tanana</i>
	Yukon Flats Schools	<i>Yukon Flats Correspondence - Fort Yukon</i>
	Yukon/Koyukuk Schools	<i>Gladys Dart School - Manley Hot Springs</i>
		<i>Jimmy Huntington School - Huslia</i>
		<i>Johnny Oldman School - Hughes</i>
		<i>Minto School - Minto</i>
Koniag	Kodiak Island Borough Schools	<i>Akhiok School - Akhiok</i>
		<i>Chiniak School - Chiniak</i>
		<i>Danger Bay School - Kodiak</i>
		<i>Larsen Bay School - Larsen Bay</i>
		<i>Main Elementary - Kodiak</i>
		<i>Old Harbor School - Old Harbor</i>
		<i>Ouzinkie School - Ouzinkie</i>
		<i>Peterson Elementary - Kodiak</i>
		<i>Port Lions School - Port Lions</i>
NANA	Northwest Arctic Borough Schools	<i>Deering School - Deering</i>
		<i>NW Arctic Dist Wide Corresp. - Kotzebue</i>
Sealaska	Annette Island Schools	<i>Leask Middle School - Metlakatla</i>
		<i>Metlakatla High School - Metlakatla</i>
		<i>Richard Johnson Elementary - Metlakatla</i>
	Chatham Schools	<i>Tenakee Springs School - Tenakee Springs</i>
		Craig City Schools
	<i>Craig Middle School - Craig</i>	
	<i>PACE Learning Centers - Craig</i>	
	Haines Borough Schools	
		<i>Haines High School - Haines</i>
		<i>Mosquito Lake Elementary - Haines</i>
	Hoonah City Schools	<i>Hoonah Jr/Sr High School - Hoonah</i>
	Hydaburg City Schools	<i>Hydaburg Elementary - Hydaburg</i>
	Juneau Borough Schools	<i>Auke Bay Elementary - Juneau</i>
		<i>Glacier Valley Elementary - Juneau</i>
		<i>Johnson Youth Center - Juneau</i>
		<i>Juneau Community Charter School - Juneau</i>
	Kake City Schools	<i>Kake Elementary - Kake</i>
		<i>Kake High School - Kake</i>
	Ketchikan Gateway Borough Schools	<i>Ketchikan Charter School - Ketchikan</i>
		<i>Point Higgins School - Ketchikan</i>
<i>Valley Park Elementary - Ketchikan</i>		
Klawock City Schools	<i>Klawock City School - Klawock</i>	

Alaska Native Region	District	School
Sealaska (continued)	Pelican City Schools	<i>Pelican School - Pelican</i>
		<i>Mitkof Middle School - Petersburg</i>
	Petersburg City Schools	<i>Petersburg High School - Petersburg</i>
		<i>Rae C. Stedman Elementary - Petersburg</i>
	Sitka Borough Schools	<i>Keet Gooshi Heen Elementary - Sitka</i>
	Skagway City Schools	<i>Skagway City School - Skagway</i>
		<i>Hollis School - Hollis</i>
	Southeast Island Schools	<i>Howard Valentine School - Coffman Cove</i>
		<i>Hyder School - Hyder</i>
		<i>Kasaan School - Ketchikan</i>
		<i>Port Alexander School - Port Alexander</i>
		<i>Port Protection School - Ketchikan</i>
		<i>SE Island Corresp. - Thorne Bay</i>
		<i>Thorne Bay School - Thorne Bay</i>
Wrangell Public Schools	<i>Evergreen Elementary - Wrangell</i>	
	<i>Stikine Middle School - Wrangell</i>	
	<i>Wrangell High School - Wrangell</i>	
	<i>Yakutat School - Yakutat</i>	
Yakutat Schools	<i>Yakutat School - Yakutat</i>	
Other	Mt. Edgecumbe High School	<i>Mt. Edgecumbe High School - Sitka</i>

Source: State of Alaska Department of Education and Early Development.

List of Schools Not Making AYP

Following is a list of schools that did not make Adequate Yearly Progress for the school year 2002-2003:

Alaska Native Region	District	School
Ahtna	Copper River Schools	<i>Copper River Corresp. - Glennallen</i>
		<i>Glennallen Jr/Sr High School - Glennallen</i>
Aleut	Aleutians East Borough Schools	<i>King Cove School - King Cove</i>
		<i>Sand Point School - Sand Point</i>
Arctic Slope	North Slope Borough Schools	<i>Alak School - Wainwright</i>
		<i>Barrow High School - Barrow</i>
		<i>Eben Hopson Middle School - Barrow</i>
		<i>Harold Kaveolook School - Kaktovik</i>
		<i>Kali School - Point Lay</i>
		<i>Meade River School - Atkasuk</i>
		<i>Nuiqsut Trapper School - Nuiqsut</i>
		<i>Nunamiut School - Anaktuvuk Pass</i>
		<i>Tikigaq School - Point Hope</i>
Bering Straits	Bering Strait Schools	<i>Aniguiin School - Elim</i>
		<i>Anthony A. Andrews School - St. Michael</i>
		<i>Brevig Mission School - Brevig Mission</i>
		<i>Diomedea School - Diomedea</i>
		<i>Gambell Schools - Gambell</i>
		<i>Hogarth Kingeekuk Memorial School - Savoogna</i>
		<i>James C. Isabell School - Teller</i>

Alaska Native Region	District	School
<i>Bering Straits (continued)</i>	Bering Strait Schools (continued)	<i>Koyuk-Malemute School - Koyuk Martin L. Olson School - Golovin Shaktoolik School - Shaktoolik Shishmaref School - Shishmaref Tukurngailnguq School - Stebbins</i>
	Nome City Schools	<i>Nome Elementary - Nome Nome-Beltz Jr/Sr High - Nome</i>
<i>Bristol Bay</i>	Dillingham City Schools	<i>Dillingham Elementary - Dillingham Dillingham Middle/High School - Dillingham</i>
	Lake & Peninsula Borough Schools	<i>Chignik Bay School - Chignik Bay Kokhanok School - Kokhanok Meshik School - Port Heiden Newhalen School - Iliamna Nondalton School - Nondalton Perryville School - Perryville</i>
	Southwest Region Schools	<i>Aleknagik School - Aleknagik Chief Ivan Blunka School - New Stuyahok Koliganek School - Koliganek Manokotak School - Manokotak Togiak School - Togiak William "Sonny" Nelson School - Ekwok</i>
<i>Calista</i>	Kashunamiut Schools	<i>Chevak School - Chevak</i>
	Kuspuk School District	<i>Aniak High School - Aniak Crow Village Sam School - Chuathbaluk George Morgan Jr/Sr H.S. - Kalskag Gusty Michael School - Stony River Jack Egnaty Sr. School - Sleetmute Johnnie John Sr. School - Crooked Creek Zackar Levi Elementary - Lower Kalskag</i>
	Lower Kuskokwim Schools	<i>Akiuk Memorial School - Kasigluk Akula Elitnaurvik School - Kasigluk Anna Tobeluk Memorial School - Nunapitchuk Ayaprun Elitnaurvik Yup'ik Immersion - Bethel Ayaprun School - Newtok Bethel Regional High School - Bethel Bethel Youth Facility - Bethel Chaputnguak School - Chefornak Chief Paul Memorial School - Kipnuk Dick R Kiunya Memorial School - Kongiganak Eek School - Eek Joann A. Alexie Memorial School - Atmautluak Ket'achik/Apalluk Memorial School - Kwethluk Kilbuck Elementary - Bethel Kuinerrarmiut Elitnaurviat - Quinhagak Kwigillingok School - Kwigillingok Lewis Angapak Memorial School - Tuntutuliak Nelson Island Area Schools - Toksook Bay</i>

Alaska Native Region	District	School
Calista (continued)	<p>Lower Kuskokwim Schools (continued)</p> <p>Lower Yukon Schools</p> <p>Saint Mary's Schools</p> <p>Yupit Schools</p>	<p><i>Nightmute School - Nightmute</i></p> <p><i>Nuniarmiut School - Mekoryuk</i></p> <p><i>Paul T. Albert Memorial School - Tununak</i></p> <p><i>Qugcuun Memorial School - Napaskiak</i></p> <p><i>Rocky Mountain School - Goodnews Bay</i></p> <p><i>William Miller Memorial School - Napaskiak</i></p> <p><i>Z. John Williams Memorial School - Napaskiak</i></p> <p><i>Alakanuk School - Alakanuk</i></p> <p><i>Emmonak School - Emmonak</i></p> <p><i>Hooper Bay School - Hooper Bay</i></p> <p><i>Ignatius Beans School - Mountain Village</i></p> <p><i>Kotlik School - Kotlik</i></p> <p><i>Marshall School - Marshall</i></p> <p><i>Pilot Station School - Pilot Station</i></p> <p><i>Pitkas Point School - St. Mary's</i></p> <p><i>Russian Mission School - Russian Mission</i></p> <p><i>Scammon Bay School - Scammon Bay</i></p> <p><i>Sheldon Point School - Sheldon Point</i></p> <p><i>St. Mary's School - St. Mary's</i></p> <p><i>Akiachak School - Akiachak</i></p> <p><i>Akiak School - Akiak</i></p> <p><i>Tuluksak School - Tuluksak</i></p>
Chugach	<p>Chugach Schools</p> <p>Cordova City Schools</p> <p>Valdez City Schools</p>	<p><i>Chugach Extension Corresp. - Valdez</i></p> <p><i>Tatitlek Community School - Tatitlek</i></p> <p><i>Cordova Jr/Sr High School - Cordova</i></p> <p><i>Hermon Hutchens Elementary - Valdez</i></p>
Cook Inlet	Anchorage Schools	<p><i>Abbott Loop Elementary - Anchorage</i></p> <p><i>Airport Heights Elementary - Anchorage</i></p> <p><i>Anchorage Outreach - Anchorage</i></p> <p><i>Aurora Elementary - Elmendorf AFB</i></p> <p><i>Avail School - Anchorage</i></p> <p><i>Bartlett High School - Anchorage</i></p> <p><i>Baxter Elementary - Anchorage</i></p> <p><i>Benson Secondary/S.E.A.R.C.H. - Anchorage</i></p> <p><i>Bowman Elementary - Anchorage</i></p> <p><i>Campbell Elementary - Anchorage</i></p> <p><i>Central Middle School of Science - Anchorage</i></p> <p><i>Chinook Elementary - Anchorage</i></p> <p><i>Chugiak High School - Eagle River</i></p> <p><i>Clark Middle School - Anchorage</i></p> <p><i>College Gate Elementary - Anchorage</i></p> <p><i>Creekside Park Elementary - Anchorage</i></p> <p><i>Denali Elementary - Anchorage</i></p> <p><i>Dimond High School - Anchorage</i></p> <p><i>Eagle River Elementary - Eagle River</i></p> <p><i>East High School - Anchorage</i></p> <p><i>Fairview Elementary - Anchorage</i></p>

Alaska Native Region	District	School
Cook Inlet (continued)	<p>Anchorage Schools (continued)</p> <p>Kenai Peninsula Borough Schools</p>	<p><i>Family Partnership Charter School - Anchorage</i></p> <p><i>Fire Lake Elementary - Eagle River</i></p> <p><i>Gladys Wood Elementary - Anchorage</i></p> <p><i>Government Hill Elementary - Anchorage</i></p> <p><i>Gruening Middle School - Eagle River</i></p> <p><i>Hanshew Middle School - Anchorage</i></p> <p><i>Kincaid Elementary - Anchorage</i></p> <p><i>Lake Hood Elementary - Anchorage</i></p> <p><i>Lake Otis Elementary - Anchorage</i></p> <p><i>Mears Middle School - Anchorage</i></p> <p><i>Mirror Lake Middle School - Chugiak</i></p> <p><i>Mountain View Elementary - Anchorage</i></p> <p><i>Muldoon Elementary - Anchorage</i></p> <p><i>North Star Elementary - Anchorage</i></p> <p><i>North Star Hospital - Anchorage</i></p> <p><i>Nunaka Valley Elementary - Anchorage</i></p> <p><i>Ocean View Elementary - Anchorage</i></p> <p><i>Pfarmigan Elementary - Anchorage</i></p> <p><i>Romig Middle School - Anchorage</i></p> <p><i>Russian Jack Elementary - Anchorage</i></p> <p><i>Sand Lake Elementary - Anchorage</i></p> <p><i>Scenic Park Elementary - Anchorage</i></p> <p><i>Service High School - Anchorage</i></p> <p><i>Spring Hill Elementary - Anchorage</i></p> <p><i>Susitna Elementary - Anchorage</i></p> <p><i>Taku Elementary - Anchorage</i></p> <p><i>Tudor Elementary - Anchorage</i></p> <p><i>Wendler Middle School - Anchorage</i></p> <p><i>West High School - Anchorage</i></p> <p><i>Whaley Center - Anchorage</i></p> <p><i>William Tyson Elementary - Anchorage</i></p> <p><i>Williwaw Elementary - Anchorage</i></p> <p><i>Willow Crest Elementary - Anchorage</i></p> <p><i>Wonder Park Elementary - Anchorage</i></p> <p><i>Chapman School - Anchor Point</i></p> <p><i>Connections - Soldotna</i></p> <p><i>Homer Flex School - Homer</i></p> <p><i>Homer Middle School - Homer</i></p> <p><i>Kachemak Selo School - Fritz Creek</i></p> <p><i>Kenai Alternative High School - Kenai</i></p> <p><i>Kenai Central High School - Kenai</i></p> <p><i>Kenai Middle School - Kenai</i></p> <p><i>Mt. View Elementary - Kenai</i></p> <p><i>Nanwalek School - Nanwalek</i></p> <p><i>Nikiski Elementary - Nikiski</i></p> <p><i>Nikiski Middle/Senior High School - Nikiski</i></p> <p><i>North Star Elementary - Nikiski</i></p> <p><i>Seward Elementary - Seward</i></p>

Alaska Native Region	District	School
Cook Inlet (continued)	Kenai Peninsula Borough Schools (continued) Mat-Su Borough Schools	<i>Skyview High School - Soldotna</i> <i>Soldotna High School - Soldotna</i> <i>Soldotna Middle School - Soldotna</i> <i>Spring Creek School - Seward</i> <i>Tebughna School - Tyonek</i> <i>Tustumena Elementary - Kasilof</i> <i>Voznesenka Elementary - Fritz Creek</i> <i>Big Lake Elementary - Big Lake</i> <i>Burchell High School - Wasilla</i> <i>Butte Elementary - Palmer</i> <i>Colony Middle School - Palmer</i> <i>Corresp. Study School - Wasilla</i> <i>Cottonwood Creek Elementary - Wasilla</i> <i>Goose Bay Elementary - Wasilla</i> <i>Houston Middle School - Big Lake</i> <i>Mat-Su Youth Facility - Palmer</i> <i>Meadow Lakes Elementary - Palmer</i> <i>Palmer Middle School - Palmer</i> <i>Pioneer Peak Elementary - Palmer</i> <i>Snowshoe Elementary - Palmer</i> <i>Tanaina Elementary - Wasilla</i> <i>Teeland Middle School - Wasilla</i> <i>Valley Pathways - Palmer</i> <i>Wasilla High School - Wasilla</i> <i>Wasilla Middle School - Wasilla</i>
Doyon	Alaska Gateway Schools Delta/Greely Schools Fairbanks North Star Borough Schools	<i>Alaska Gateway Corresp./Alt. - Tok</i> <i>Mentasta Lake School - Mentasta Lake</i> <i>Tetlin School - Tetlin</i> <i>Tok School - Tok</i> <i>Walter Northway School - Northway</i> <i>Delta Charter Cyber School - Delta Junction</i> <i>Delta Greely Correspondence - Delta Junction</i> <i>Delta Junction Elementary - Delta Junction</i> <i>Delta Junction Jr/Sr High School - Delta Junction</i> <i>Alternative Learning Systems - Fairbanks</i> <i>Badger Road Elementary - Fairbanks</i> <i>Barnette Elementary - Fairbanks</i> <i>Chinook Charter School - Fairbanks</i> <i>Crawford Elementary - Eielson AFB</i> <i>Denali Elementary - Fairbanks</i> <i>Fairbanks Youth Facility - Fairbanks</i> <i>Guided Independent Study - Fairbanks</i> <i>Hunter Elementary - Fairbanks</i> <i>Lathrop High School - Fairbanks</i> <i>North Pole High School - North Pole</i> <i>North Pole Middle School - North Pole</i> <i>Randy Smith Middle School - Fairbanks</i>

Alaska Native Region	District	School	
Sealaska (continued)	Chatham Schools (continued)	<i>Klukwan School - Haines</i>	
	Craig City Schools	<i>Craig High School - Craig</i> <i>PACE Correspondence - Craig</i>	
	Haines Borough Schools	<i>Haines Correspondence - Haines</i>	
	Hoonah City Schools	<i>Hoonah Elementary - Hoonah</i>	
	Hydaburg City Schools	<i>Hydaburg Jr/Sr High School - Hydaburg</i>	
	Juneau Borough Schools	<i>Dzantik'i Heeni Middle School - Juneau</i>	
		<i>Floyd Dryden Middle School - Juneau</i>	
		<i>Gastineau Elementary - Juneau</i>	
		<i>Harborview Elementary - Juneau</i>	
		<i>Juneau District Corresp. School - Juneau</i>	
		<i>Juneau-Douglas High School - Juneau</i>	
		<i>Mendenhall River School - Juneau</i>	
		<i>Riverbend Elementary - Juneau</i>	
		Ketchikan Gateway Borough Schools	<i>Houghtaling Elementary - Ketchikan</i>
			<i>Ketchikan Correspondence - Ketchikan</i>
	<i>Ketchikan High School - Ketchikan</i>		
	<i>Ketchikan Regional Youth Facility - Ketchikan</i>		
	<i>Revilla Jr/Sr High School - Ketchikan</i>		
	<i>Schoenbar Middle School - Ketchikan</i>		
	<i>White Cliff Elementary - Ketchikan</i>		
Sitka Borough Schools	<i>Blatchley Middle School - Sitka</i>		
	<i>Pacific High School - Sitka</i>		
	<i>Sitka Correspondence - Sitka</i>		
	<i>Sitka High School - Sitka</i>		
Southeast Island Schools	<i>Naukati School - Ketchikan</i>		
Other	Alyeska Central School	<i>Alyeska Central School - Juneau</i>	

Source: State of Alaska Department of Education and Early Development.

Dropout Rates

Statewide dropout rates are displayed in Table 6 for the 2001-2002 school year, the most recent year available. Reporting, calculating, and interpreting dropout rates are subject to error and should be viewed with some caution when reported at the region and school district level. GED students, for instance are counted as dropouts because it is not a regular diploma by definition provided by the National Center for Education Statistics, part of the U.S. Department of Education. Students who miss an excessive number of days from classes may be counted as dropouts if the school makes the judgment that the number of days missed has affected the student's ability to finish assignments for that school year. A dropout is defined as a student who was enrolled in the school at some time during the school year and left the school at some time during that same school year. The definition of dropouts has not changed since 1989. Each school district is required to use this definition.

This does not include individuals who:

1. graduated from high school or completed a state- or district-approved education program, as evidenced by receipt of formal recognition from school authorities, or
2. transferred to another public school, private school or state- or district-approved education program, or
3. is temporarily absent due to suspension, or
4. is absent due to illness or medical condition, or
5. died.

The DEED uses the OASIS database system to identify students who have re-enrolled in another school district within the state. This system has been used since 1995. Students transferring within the state system are not counted as dropouts. The No Child Left Behind Act required the DEED to adopt a cohort method for determining graduation rates. This new methodology was implemented for the first time for the 2003 graduates. The new calculation of graduates uses data that tracks students from the 9th grade and includes students who have finished high school courses but not yet passed the high school qualifying exam. The dropout numbers presented in this study use the previous methodology for determining dropouts. Future studies will use the new cohort methodology.

The school year is defined as the 12-month period beginning with July 1 and ending June 30. In this case, the year is the 2001-2002 school year.

- The statewide dropout rate for all students for the 2001-2002 school year is 5.6 percent. Alaska Natives have a higher dropout rate than all other students, 8.8 percent compared to 4.7 percent among non-Natives.
- Alaska Natives comprise 22 percent of the enrollment in grades 7 through 12, yet represent 25.6 percent of students who drop out during this time.

Table 6
Dropout Rates for Grades 7 through 12 by Region
2001-2002 School Year

Alaska Native Region	AK Native Student Dropouts		All Other Student Dropouts		Total Student Dropouts	
	(number)	(percent)	(number)	(percent)	(number)	(percent)
<i>Ahtna</i>	12	11.5	12	3.1	24	4.9
<i>Aleut</i>	0	0.0	0	0.0	0	0.0
<i>Arctic Slope</i>	29	4.1	1	0.6	30	3.4
<i>Bering Straits</i>	74	9.3	5	2.4	79	7.9
<i>Bristol Bay</i>	5	0.7	17	14.3	22	2.6
<i>Calista</i>	307	11.7	8	6.0	315	11.4
<i>Chugach</i>	1	0.9	9	1.5	10	1.4
<i>Cook Inlet</i>	357	10.9	1,481	4.8	1,838	5.4
<i>Doyon</i>	179	10.7	490	5.5	669	6.3
<i>Koniag</i>	6	2.2	6	0.6	12	0.9
<i>NANA</i>	58	7.0	0	0.0	58	6.6
<i>Sealaska</i>	148	8.8	195	4.1	343	5.3
Statewide	1,178	8.8%	2,246	4.7%	3,424	5.6%

Source: State of Alaska Department of Education and Early Development, 2001-2002 school year. Several regions' dropout rates appear low, and zero dropouts in a region are unlikely. Alyeska Central School and Mt. Edgecumbe High School are included in the statewide totals but not in the regional totals.

Daily Attendance Rates

The statewide average attendance rate was 92.9 percent for the school year 2001-2002. Koniag region schools had the highest attendance rate at 93.7 and NANA region had the lowest attendance rates at 87.6 percent. DEED measures Alaska attendance rates by taking the sum of all days present for all students in a school for the year and dividing this by the sum of all days present and all days absent for all students in a school for the year. This allows the school to account for enrollments and dropouts that occur during the school year. Attendance rate information was only collected at the school level up until the 2002-2003 school year. The information is not available by ethnicity and is not yet available for the 2002-2003 school year.

Table 7
Average Daily Attendance Rates by Region
2001-2002 School Year

Alaska Native Region	Attendance Rate (percentage)
<i>Ahtna</i>	93.5%
<i>Aleut</i>	92.4%
<i>Arctic Slope</i>	88.9%
<i>Bering Straits</i>	90.5%
<i>Bristol Bay</i>	93.2%
<i>Calista</i>	90.6%
<i>Chugach</i>	93.5%
<i>Cook Inlet</i>	93.1%
<i>Doyon</i>	93.6%
<i>Koniag</i>	93.7%
<i>NANA</i>	87.6%
<i>Sealaska</i>	92.2%
Statewide Average	92.9%

Source: State of Alaska Department of Education and Early Development, 2001-2002 school year. Alyeska Central School and Mt. Edgecumbe High School are included in the statewide totals but not in the regional totals.

Graduation Rates

The graduation rate information for the school year 2002-2003 is not yet available. For this reason, Table 8 provides information on Native graduates and all other graduates for the school year 2001-2002.

The current method used by DEED for calculating graduation rates results in some statistical difficulties when rates are expressed by region and school. Readers are cautioned that the results may not match what is commonly perceived as graduation rates. With this caution, the past method of calculating graduation rates (until 2002-2003) was to divide the number of graduates (regular diploma recipients) by the number of 12th grade students that were enrolled on the last day of school. Students receiving Certificates of Attendance are not counted as graduates but are counted in the denominator if they were enrolled on the last day.

Just this year, the DEED went to a cohort method where they will have to incorporate four years of information. This may be a problem in making comparisons to prior years when data is finally released, because historical information does not include all subgroups.

Table 8
Graduation Rates by Region
2001-2002 School Year

Alaska Native Region	Alaska Natives			All Other Students			Total Enrollment	Total Graduates
	Enrollment	Graduates	% Graduates	Enrollment	Graduates	% Graduates		
<i>Ahtna</i>	8	6	75.0	64	54	84.4	72	60
<i>Aleut</i>	32	30	93.8	24	26	108.3	56	56
<i>Arctic Slope</i>	83	114	137.3	18	19	105.6	101	133
<i>Bering Straits</i>	63	58	92.1	30	14	46.7	93	72
<i>Bristol Bay</i>	84	74	88.1	20	16	80.0	104	90
<i>Calista</i>	261	211	80.8	24	20	83.3	285	231
<i>Chugach</i>	18	20	111.1	72	68	94.4	90	88
<i>Cook Inlet</i>	402	257	63.9	4,493	3,747	83.4	4,895	4,004
<i>Doyon</i>	171	154	90.1	1,043	923	88.5	1,214	1,077
<i>Koniag</i>	49	45	91.8	146	139	95.2	195	184
<i>NANA</i>	82	62	75.6	6	6	100.0	88	68
<i>Sealaska</i>	207	169	81.6	681	611	89.7	888	780
Statewide Totals	3,027	2451	81.0	13,394	11,337	84.6	16,421	13,788

Source: State of Alaska Department of Education and Early Development, 2001-2002 school year. Alyeska Central School and Mt. Edgecumbe High School are included in the statewide totals but not in the regional totals. Percent of graduates that are greater than 100 may be due to differing time frames for gathering enrollment and graduates data or students who graduate during the school year and are not counted enrolled on the last day of school.

Special Education Students

The Alaska Department of Education and Early Development identifies students with disabilities in the following general categories:

- Mental retardation,
- Hearing impaired,
- Speech/language impaired,
- Developmentally delayed,
- Visual impairment,
- Emotional disturbance,
- Orthopedic impairments,
- Specific learning disabilities,
- Deaf-blindness,
- Autism, and
- Traumatic brain injury.¹

For the 2002-2003 school year, there were 18,129 students with disabilities enrolled statewide. These students represent 13.5 percent of the total student enrollment of 134,364 for the year. Alaska Native students are almost twice as likely as all other students to be classified with disabilities. Seventeen (17) percent of Alaska Native students (5,433 students with disabilities divided by 31,873 total Native students) are classified with disabilities compared to 9.5 percent of all other students (12,696 all other race students with disabilities divided by 102,491 total of all other students).

Table 9
Students With Disabilities
2002-2003 School Year

Alaska Native Region	Alaska Native	Percent Alaska Native	All Other Races	Percent All Other	Total Students with Disabilities	Total Student Enrollment	Percent of All Students with Disabilities
<i>Ahtna</i>	61	35.7	110	64.3	171	1,000	17.1
<i>Aleut</i>	70	61.4	44	38.6	114	888	12.8
<i>Arctic Slope</i>	197	90.0	22	10.0	219	2,115	10.4
<i>Bering Straits</i>	320	95.2	16	4.8	336	2,497	13.5
<i>Bristol Bay</i>	264	92.6	21	7.4	285	1,976	14.4
<i>Calista</i>	884	97.5	23	2.5	907	7,173	12.6
<i>Chugach</i>	58	26.1	164	73.9	222	1,555	14.3
<i>Cook Inlet</i>	1,760	16.6	8,854	83.4	10,614	73,675	14.4
<i>Doyon</i>	778	28.0	1,998	72.0	2,776	24,073	11.5
<i>Koniag</i>	122	29.5	291	70.5	413	2,754	15.0
<i>NANA</i>	201	91.0	20	9.0	221	2,172	10.2
<i>Sealaska</i>	706	38.8	1,115	61.2	1,821	13,425	13.6
Statewide Totals	5,433	30.0	12,696	70.0	18,129	134,364	13.5

Source: State of Alaska Department of Education and Early Development, 2002 – 2003 school year. Statewide totals include students at the Alyeska Central School and Mt. Edgecumbe High School. These two schools are not shown in the geographic area totals.

¹ See the following Department of Education and Early Development website for more information - <http://www.eed.state.ak.us/tls/sped/>

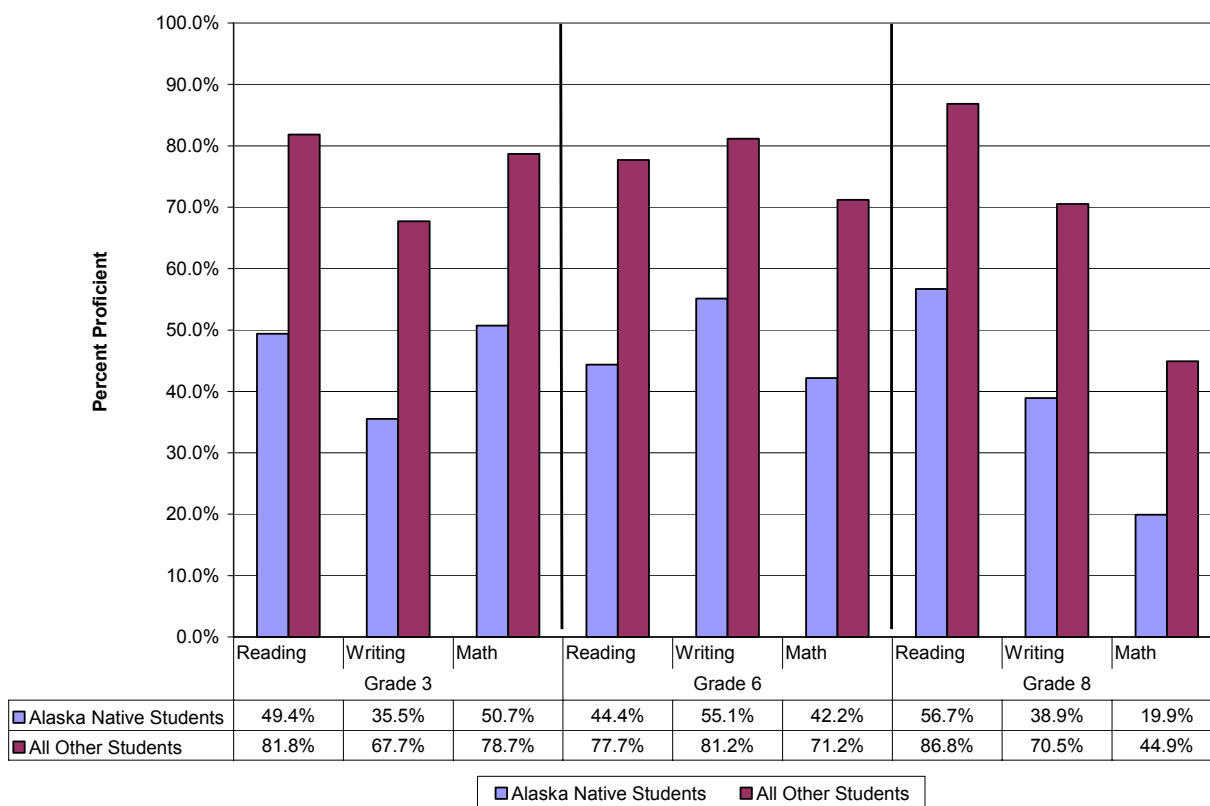
Benchmarks

The Alaska Benchmark Examinations measure whether students are achieving statewide academic standards in reading, writing, and math. Benchmark assessments results are not published when less than five students are tested at a grade level or two or fewer students are reported in an individual cell. (An example of an individual cell is the grade 3 students taking the reading exam.) Percentages reported are based on the total number of students tested, not the number of students enrolled in the grade. See the Appendix for a complete list of districts with reportable subjects by grade and the total number of students tested.

For the school year of 2002-2003, Alaska set a starting point of 64.03 percent of students who must show proficiency in the language arts: reading and writing. The state is combining students' scores on reading and writing tests to create one language arts score. The math target is 54.86 percent of students who must show proficiency.

Figure 7 depicts the statewide school benchmarks for the 2002-2003 school year and shows the percent proficient for Alaska Native students compared to all other students.

Figure 7
Statewide School Benchmark Results
2002-2003 School Year



Source: State of Alaska Department of Education and Early Development.

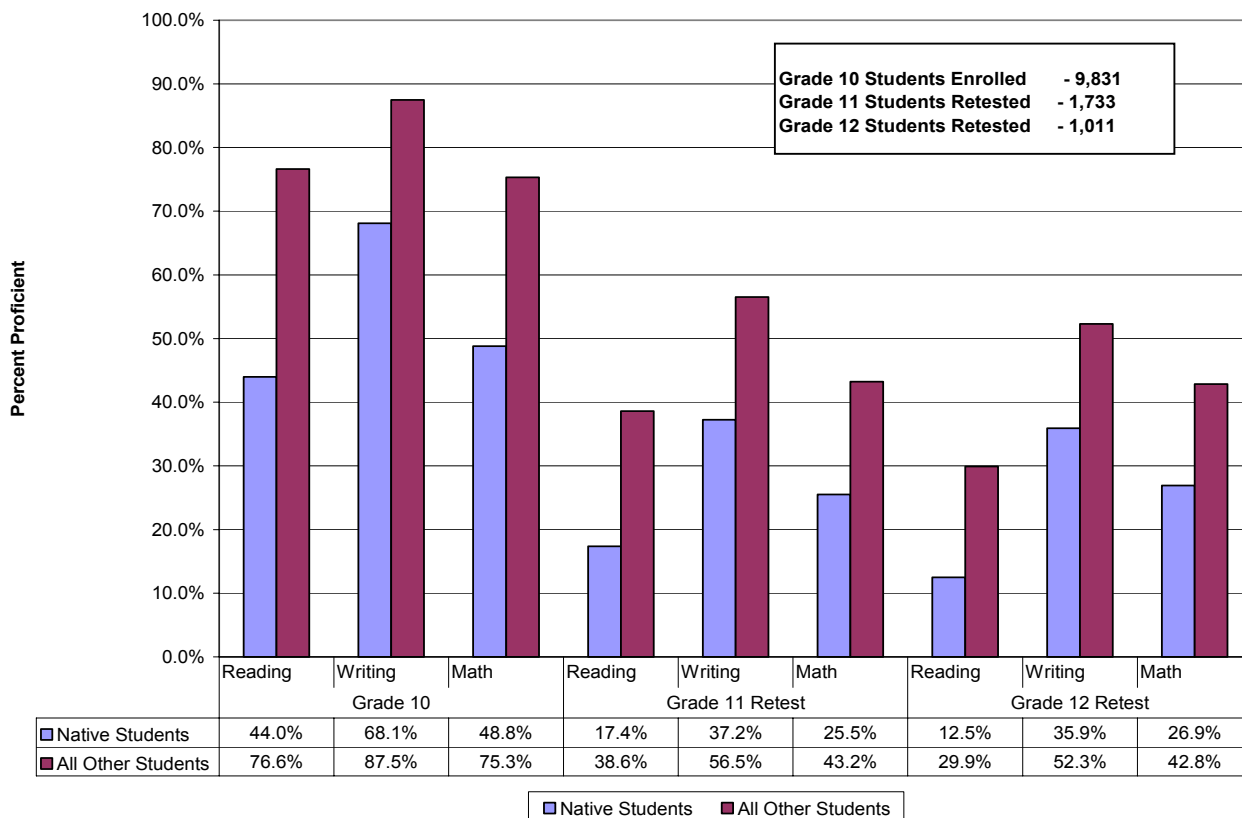
According to the State of Alaska Department of Education and Early Development, there were 20 schools throughout the state that had not yet submitted their benchmark exam results at the time of this report. The benchmark exam results displayed in this report are the totals of the reporting schools and districts as of September 2003.

High School Graduation Qualifying Exam

Students take the Alaska Benchmark Examinations in three different grades during their public school careers. The Benchmark Examinations are designed to tell parents and educators if their children are making sufficient progress toward passing the high school exit exam, which also tests students in reading, writing, and mathematics.

Students are required to pass the Alaska High School Graduation Qualifying Examination in order to receive a high school diploma. Students can begin taking the exam in their sophomore year and are eligible to retake the exams as juniors and seniors for unpassed portions of the exam. Students are offered retests in both the spring and fall of their junior and senior years. Those who do not pass the High School Graduation Qualifying Examination will be denied a diploma and will receive instead a Certificate of Attendance.

Figure 8
High School Graduation Qualifying Exam Proficiency Results
2002-2003 School Year



Source: State of Alaska Department of Education and Early Development.