

Alaska Native K-12 Education Indicators

Sealaska

***Prepared for:
First Alaskans Institute
Alaska Native Policy Center***

Prepared by:



Juneau Anchorage

***This document contains pages 149 through 161 of the full report.
Please visit <http://www.firstalaskans.org>
for a full copy of the report.***

***October, 2003
Second Printing March 2004***

Sealaska Region

Population

Communities included in the Sealaska region for determining population are those communities served by the Annette Island School, Chatham School, Craig City School, Haines Borough School, Hoonah City School, Hydaburg City School, Juneau Borough School, Kake City School, Ketchikan Gateway Borough School, Klawock City School, Pelican City School, Petersburg City School, Sitka Borough School, Skagway City School, Southeast Island School, Wrangell Public School, and the Yakutat City School District. Communities are as follows:

Angoon city	Kupreanof city
Coffman Cove city	Lutak CDP
Covenant Life CDP	Metlakatla CDP
Craig city	Meyers Chuck CDP
Cube Cove CDP	Mosquito Lake CDP
Edna Bay CDP	Mud Bay CDP
Elfin Cove CDP	Naukati Bay CDP
Excursion Inlet CDP	Pelican city
Game Creek CDP	Petersburg city
Gustavus CDP	Point Baker CDP
Haines city	Port Alexander city
Hobart Bay CDP	Port Protection CDP
Hollis CDP	Saxman city
Hoonah city	Sitka city and borough
Hydaburg city	Skagway city
Hyder CDP	Tenakee Springs city
Juneau city and borough	Thoms Place CDP
Kake city	Thorne Bay city
Kasaan city	Whale Pass CDP
Ketchikan city	Whitestone Logging Camp CDP
Klawock city	Wrangell city
Klukwan CDP	Yakutat CDP

Note: CDP is the U.S. Census Bureau abbreviation for Census Designated Place.

More than 21 percent of the Sealaska region population was identified as Alaska Native Alone or in combination with some other race for Census 2000. The Alaska Native population is greater than shown in the following table, but Census 2000 sampling and suppression of data for communities with small populations causes an undercount of the actual population.

**Table 65
Sealaska Region Demographics Profile**

Sealaska Region Demographics Summary				
	Total Population		Alaska Native Alone or in combination with some other race	
	Number	Percent	Number	Percent
Population	66,054		14,116	
Gender				
Male	33,822	51.2	6,991	49.5
Female	32,232	48.8	7,125	50.5
Age				
< 5 years	4,316	6.5	1,327	9.4
5 - 14	10,631	16.1	3,042	21.6
15 - 19	5,058	7.7	1,411	10.0
20 - 34	12,243	18.5	2,729	19.3
35 - 44	12,013	18.2	2,083	14.8
45 - 64	16,939	25.6	2,489	17.6
65 or more years	4,854	7.3	1,035	7.3

Source: U.S. Census Bureau, Census 2000. Total population includes Alaska Natives and in combination with some other race.

The percentage of the Alaska Native population that is school age (ages 5 through 19) is much larger than the percentage of the Sealaska population that is school age, 31.6 percent compared to 23.8 percent.

Enrollment by School District

Sealaska is the third largest region in terms of number of schools and students in the state. There are 17 school districts with 69 schools in the Sealaska geographic region. Native enrollment for the school year 2002-2003 was 27.5 percent of the total 13,425 enrollment. The Juneau School District is located in the Sealaska region and is the fifth largest school district in the state with a total enrollment of 5,543. Alaska Native student enrollment in the Juneau School District for the school year 2002-2003 was 1,187.

Table 66
Sealaska Region Enrollment by School
2002-2003 School Year

District	School	Enrollment				Total
		Native	Percent Native	All Other	Percent All Other	
Annette Island Schools	<i>Leask Middle School</i>	46	93.9	3	6.1	49
	<i>Metlakatla High School</i>	95	97.9	2	2.1	97
	<i>Richard Johnson Elementary</i>	148	99.3	1	0.7	149
Chatham Schools	<i>Angoon School</i>	117	93.6	8	6.4	125
	<i>Gustavus School</i>	3	6.7	42	93.3	45
	<i>Klukwan School</i>	19	46.3	22	53.7	41
	<i>Tenakee Springs School</i>	-	0.0	12	100.0	12
Craig City Schools	<i>Craig Elementary</i>	59	32.2	124	67.8	183
	<i>Craig High School</i>	36	36.0	64	64.0	100
	<i>Craig Middle School</i>	30	33.3	60	66.7	90
	<i>PACE Correspondence</i>	86	18.0	391	82.0	477
	<i>PACE Learning Centers</i>	17	73.9	6	26.1	23
Haines Borough Schools	<i>Haines Correspondence</i>	-	0.0	12	100.0	12
	<i>Haines Elementary</i>	43	22.3	150	77.7	193
	<i>Haines High School</i>	18	15.7	97	84.3	115
	<i>Mosquito Lake Elementary</i>	2	18.2	9	81.8	11
Hoonah City Schools	<i>Hoonah Elementary</i>	64	87.7	9	12.3	73
	<i>Hoonah Jr/Sr High School</i>	88	72.7	33	27.3	121
Hydaburg City Schools	<i>Hydaburg Elementary</i>	55	94.8	3	5.2	58
	<i>Hydaburg Jr/Sr High School</i>	36	94.7	2	5.3	38
Juneau Borough Schools	<i>Auke Bay Elementary</i>	71	17.2	341	82.8	412
	<i>Dzantik'i Heeni Middle School</i>	174	24.6	534	75.4	708
	<i>Floyd Dryden Middle School</i>	113	17.4	537	82.6	650
	<i>Gastineau Elementary</i>	68	24.5	209	75.5	277
	<i>Glacier Valley Elementary</i>	82	24.0	260	76.0	342
	<i>Harborview Elementary</i>	100	23.1	333	76.9	433
	<i>Johnson Youth Center</i>	11	50.0	11	50.0	22
	<i>Juneau Community Charter School</i>	3	5.0	57	95.0	60
	<i>Juneau District Corresp. School</i>	14	22.6	48	77.4	62
	<i>Juneau-Douglas High School</i>	322	18.8	1,389	81.2	1,711
	<i>Mendenhall River School</i>	108	23.7	347	76.3	455
	<i>Riverbend Elementary</i>	121	29.4	290	70.6	411
	Kake City Schools	<i>Kake Elementary</i>	56	86.2	9	13.8
<i>Kake High School</i>		73	83.0	15	17.0	88
Ketchikan Gateway Borough Schools	<i>Houghtaling Elementary</i>	162	38.5	259	61.5	421
	<i>Ketchikan Charter School</i>	32	26.2	90	73.8	122
	<i>Ketchikan Correspondence</i>	6	50.0	6	50.0	12
	<i>Ketchikan High School</i>	99	15.3	548	84.7	647
	<i>Ketchikan Regional Youth Facility</i>	7	70.0	3	30.0	10
	<i>Point Higgins School</i>	41	16.6	206	83.4	247
	<i>Revilla Jr/Sr High School</i>	53	42.1	73	57.9	126
	<i>Schoenbar Middle School</i>	103	26.5	286	73.5	389
	<i>Valley Park Elementary</i>	74	42.0	102	58.0	176
	<i>White Cliff Elementary</i>	68	28.2	173	71.8	241

Sealaska Region enrollment continued:

District	School	Enrollment				
		Native	Percent Native	All Other	Percent All Other	Total
Klawock City Schools	<i>Klawock City School</i>	94	59.5	64	40.5	158
Pelican City Schools	<i>Pelican School</i>	8	44.4	10	55.6	18
Petersburg City Schools	<i>Mitkof Middle School</i>	27	17.5	127	82.5	154
	<i>Petersburg High School</i>	24	11.1	193	88.9	217
	<i>Rae C. Stedman Elementary</i>	45	17.4	214	82.6	259
Sitka Borough Schools	<i>Baranof Elementary</i>	74	29.2	179	70.8	253
	<i>Blatchley Middle School</i>	106	31.3	233	68.7	339
	<i>Keet Gooshi Heen Elementary</i>	108	24.3	337	75.7	445
	<i>Pacific High School</i>	18	45.0	22	55.0	40
	<i>Sitka Correspondence</i>	2	4.0	48	96.0	50
	<i>Sitka High School</i>	88	19.3	367	80.7	455
	<i>Skagway City School</i>	8	6.8	109	93.2	117
Southeast Island Schools	<i>Hollis School</i>	-	0.0	10	100.0	10
	<i>Howard Valentine School</i>	-	0.0	31	100.0	31
	<i>Hyder School</i>	1	8.3	11	91.7	12
	<i>Kasaan School</i>	9	75.0	3	25.0	12
	<i>Naukati School</i>	-	0.0	30	100.0	30
	<i>Port Alexander School</i>	-	0.0	12	100.0	12
	<i>Port Protection School</i>	7	29.2	17	70.8	24
	<i>SE Island Corresp.</i>	-	0.0	18	100.0	18
	<i>Thorne Bay School</i>	1	1.2	84	98.8	85
Wrangell Public Schools	<i>Evergreen Elementary</i>	40	21.3	148	78.7	188
	<i>Stikine Middle School</i>	5	5.0	95	95.0	100
	<i>Wrangell High School</i>	28	18.2	126	81.8	154
Yakutat Schools	<i>Yakutat School</i>	77	53.1	68	46.9	145
Sealaska Region Total		3,693	27.5	9,732	72.5	13,425

Source: State of Alaska Department of Education and Early Development.

List of Schools Making AYP

The following schools made Adequate Yearly Progress for the school year 2002-2003:

District	School
Annette Island Schools	<i>Leask Middle School - Metlakatla</i>
	<i>Metlakatla High School - Metlakatla</i>
	<i>Richard Johnson Elementary - Metlakatla</i>
Chatham Schools	<i>Tenakee Springs School - Tenakee Springs</i>
Craig City Schools	<i>Craig Elementary - Craig</i>
	<i>Craig Middle School - Craig</i>
	<i>PACE Learning Centers - Craig</i>
Haines Borough Schools	<i>Haines Elementary - Haines</i>
	<i>Haines High School - Haines</i>
	<i>Mosquito Lake Elementary - Haines</i>
Hoonah City Schools	<i>Hoonah Jr/Sr High School - Hoonah</i>

District	School
Hydaburg City Schools	<i>Hydaburg Elementary - Hydaburg</i>
Juneau Borough Schools	<i>Auke Bay Elementary - Juneau</i>
	<i>Glacier Valley Elementary - Juneau</i>
	<i>Johnson Youth Center - Juneau</i>
	<i>Juneau Community Charter School - Juneau</i>
Kake City Schools	<i>Kake Elementary - Kake</i>
	<i>Kake High School - Kake</i>
Ketchikan Gateway Borough Schools	<i>Ketchikan Charter School - Ketchikan</i>
	<i>Point Higgins School - Ketchikan</i>
	<i>Valley Park Elementary - Ketchikan</i>
Klawock City Schools	<i>Klawock City School - Klawock</i>
Pelican City Schools	<i>Pelican School - Pelican</i>
Petersburg City Schools	<i>Mitkof Middle School - Petersburg</i>
	<i>Petersburg High School - Petersburg</i>
	<i>Rae C. Stedman Elementary - Petersburg</i>
Sitka Borough Schools	<i>Keet Gooshi Heen Elementary - Sitka</i>
Skagway City Schools	<i>Skagway City School - Skagway</i>
Southeast Island Schools	<i>Hollis School - Hollis</i>
	<i>Howard Valentine School - Coffman Cove</i>
	<i>Hyder School - Hyder</i>
	<i>Kasaan School - Ketchikan</i>
	<i>Port Alexander School - Port Alexander</i>
	<i>Port Protection School - Ketchikan</i>
	<i>SE Island Corresp. - Thorne Bay</i>
	<i>Thorne Bay School - Thorne Bay</i>
Wrangell Public Schools	<i>Evergreen Elementary - Wrangell</i>
	<i>Stikine Middle School - Wrangell</i>
	<i>Wrangell High School - Wrangell</i>
Yakutat Schools	<i>Yakutat School - Yakutat</i>

List of Schools Not Making AYP

The following schools did not make Adequate Yearly Progress for the school year 2002-2003:

District	School	Reason for not Meeting AYP
Chatham Schools	<i>Angoon School - Angoon</i>	1. Participation rates for school as a whole and Alaska Native students. 2. Language Arts scores for school as a whole and Alaska Native students. 3. Math scores for school as a whole and Alaska Native students.
	<i>Gustavus School - Gustavus</i>	Participation rates for school as a whole and Caucasian students.
Craig City Schools	<i>Klukwan School - Haines</i>	Participation rates for school as a whole.
	<i>Craig High School - Craig</i>	Participation rates for economically disadvantaged students.
	<i>PACE Correspondence - Craig</i>	Participation rates for school as a whole, Alaska Native, and Caucasian students.
Haines Borough Schools	<i>Haines Correspondence - Haines</i>	Participation rates for school as a whole.
Hoonah City Schools	<i>Hoonah Elementary - Hoonah</i>	Language Arts scores for economically disadvantaged students.
Hydaburg City Schools	<i>Hydaburg Jr/Sr High School - Hydaburg</i>	Language Arts scores for school as a whole, Alaska Native, and economically disadvantaged students.

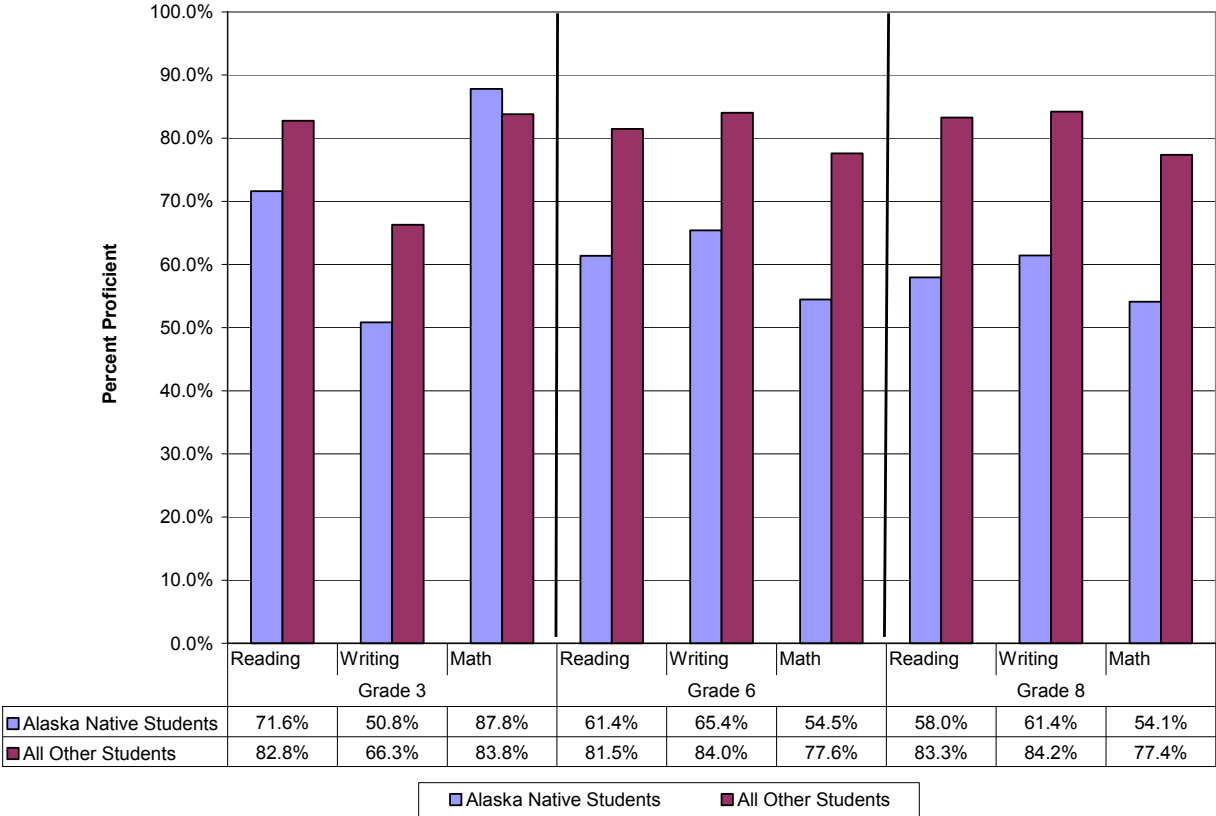
District	School	Reason for not Meeting AYP	
Juneau Borough Schools	<i>Dzantik'i Heeni Middle School - Juneau</i>	1. Language Arts scores for Alaska Native, economically disadvantaged students, students with disabilities, and limited English proficiency students. 2. Math scores for Alaska Native, economically disadvantaged, and students with disabilities.	
	<i>Floyd Dryden Middle School - Juneau</i>	1. Language Arts scores for students with disabilities. 2. Math scores for students with disabilities.	
	<i>Gastineau Elementary - Juneau</i>	Language Arts scores for economically disadvantaged and students with disabilities.	
	<i>Harborview Elementary - Juneau</i>	Language Arts scores for students with disabilities.	
	<i>Juneau District Corresp. School - Juneau</i>	Participation rates for school as a whole and Caucasian students.	
	<i>Juneau-Douglas High School - Juneau</i>	1. Participation rates for school as a whole, Alaska Native, Caucasian, Hispanic, economically disadvantaged, students with disabilities, and limited English proficiency students. 2. Language Arts scores for Alaska Native, students with disabilities, and limited English proficiency students.	
	<i>Mendenhall River School - Juneau</i>	Language Arts scores for students with disabilities.	
	<i>Riverbend Elementary - Juneau</i>	1. Language Arts scores for students with disabilities. 2. Math scores for students with disabilities.	
	Ketchikan Gateway Borough Schools	<i>Houghtaling Elementary - Ketchikan</i>	Participation rates for economically disadvantaged and students with disabilities.
		<i>Ketchikan Correspondence - Ketchikan</i>	Participation rates for school as a whole.
<i>Ketchikan High School - Ketchikan</i>		1. Participation rates for school as a whole, Alaska Native, Caucasian, and students with disabilities. 2. Language Arts scores for students with disabilities.	
<i>Ketchikan Regional Youth Facility - Ketchikan</i>		Participation rates for school as a whole.	
<i>Revilla Jr/Sr High School - Ketchikan</i>		Participation rates for school as a whole, Alaska Native, and Caucasian students.	
<i>Schoenbar Middle School - Ketchikan</i>		1. Participation rates for Alaska Native, economically disadvantaged, and students with disabilities. 2. Language Arts scores for students with disabilities. 3. Math scores for students with disabilities.	
<i>White Cliff Elementary - Ketchikan</i>		1. Language Arts scores for students with disabilities. 2. Math scores for students with disabilities.	
Sitka Borough Schools		<i>Blatchley Middle School - Sitka</i>	1. Language Arts scores for students with disabilities. 2. Math scores for students with disabilities.
	<i>Pacific High School - Sitka</i>	Participation rates for school as a whole.	
	<i>Sitka Correspondence - Sitka</i>	Participation rates for school as a whole.	
	<i>Sitka High School - Sitka</i>	Math scores for students with disabilities.	
	<i>Baranof Elementary - Sitka</i>	AYP results not available.	
Southeast Island Schools	<i>Naukati School - Ketchikan</i>	Math scores for school as a whole.	

Education Benchmarks

School districts included with the Sealaska geographic region are the Annette Island Schools, Chatham Schools, Haines Borough Schools, Craig City Schools, Hoonah City Schools, Juneau Borough Schools, Kake City Schools, Ketchikan Gateway Borough Schools, Southeast Island Schools, Hydaburg City Schools, Klawock City Schools, Pelican City Schools, Petersburg City Schools, Sitka Borough Schools, Skagway City Schools, Wrangell Public Schools, and the Yakutat City School Districts. Mt. Edgecumbe High School in Sitka is not included in these results. Grade 8 of the Haines Borough School District, grade 3 of the Kake City School District, grade 3 of Klawock City School District, all grades and subjects for the Pelican City School District, grade 3 of the Petersburg City School District, grade 3 of the Skagway City School District, grades 3 and 8 of the Southeast Island School

District, and grade 3 of the Yakutat City School District have all been suppressed due to confidentiality reasons.

Figure 42
Sealaska Region Benchmark Results
2003-2003 School Year



Source: State of Alaska Department of Education and Early Development. Missing benchmarks are due to confidential data elements. Due to the suppression and/or absence of data from some schools, benchmark results may not accurately represent the entire region.

Daily Attendance Rates

The Sealaska region schools had average attendance of 92.2 percent for the 2001-2002 school year. (See Table 67.) DEED measures attendance rates by taking the sum of all days present for all students in a school for the year and dividing this by the sum of all days present and all days absent for all students in a school for the year. The information is not available by ethnicity and is not yet available for the 2002-2003 school year.

Table 67
Sealaska Region Attendance Rates
2001-2002 School Year

District Name	School Name	Attendance Rate
Annette Island	Leask Middle School	93.1%
Annette Island	Metlakatla High School	94.0%
Annette Island	Richard Johnson Elementary	91.8%
Chatham	Angoon School	92.2%
Chatham	Cube Cove School	95.7%
Chatham	Gustavus School	88.5%
Chatham	Klukwan School	90.7%
Chatham	Tenakee Springs School	91.2%
Chugach	Chenega Bay School	93.5%
Chugach	Chugach Extension Corresp.	100.0%
Chugach	Tatitlek Community School	95.6%
Chugach	Whittier Community School	89.9%
Craig City	Craig Correspondence	97.2%
Craig City	Craig Elementary	92.3%
Craig City	Craig High School	91.4%
Haines	Haines Elementary	94.0%
Haines	Haines High School	91.0%
Haines	Haines Junior High School	94.3%
Haines	Mosquito Lake Elementary	94.0%
Hoonah City	Hoonah Elementary	94.3%
Hoonah City	Hoonah Jr/Sr High School	95.4%
Hydaburg City	Hydaburg Elementary	88.5%
Hydaburg City	Hydaburg Jr/Sr High School	86.3%
Juneau	Auke Bay Elementary	93.7%
Juneau	Dzantik'i Heeni Middle School	91.5%
Juneau	Floyd Dryden Middle School	85.1%
Juneau	Gastineau Elementary	93.1%
Juneau	Glacier Valley Elementary	93.4%
Juneau	Harborview Elementary	93.8%
Juneau	Juneau Community Charter School	92.4%
Juneau	Juneau-Douglas High School	88.3%
Juneau	Mendenhall River School	94.0%
Juneau	Riverbend Elementary	93.3%
Kake City	Kake Elementary	92.3%
Kake City	Kake High School	93.0%
Ketchikan Gateway	Houghtaling Elementary	93.7%
Ketchikan Gateway	Ketchikan Charter School	95.8%
Ketchikan Gateway	Ketchikan Correspondence	95.9%

District Name (Sealaska continued)	School Name	Attendance Rate
Ketchikan Gateway	Ketchikan High School	95.6%
Ketchikan Gateway	Point Higgins School	91.9%
Ketchikan Gateway	Revilla Jr/Sr High School	90.3%
Ketchikan Gateway	Schoenbar Middle School	93.0%
Ketchikan Gateway	Valley Park Elementary	93.6%
Ketchikan Gateway	White Cliff Elementary	94.8%
Klawock City	Klawock City School	90.2%
Pelican City	Pelican School	80.9%
Petersburg City	Mitkof Middle School	91.9%
Petersburg City	Petersburg High School	90.4%
Sitka	Baranof Elementary	94.4%
Sitka	Blatchley Middle School	92.8%
Sitka	Keet Gooshi Heen Elementary	94.6%
Sitka	Pacific High School	74.0%
Sitka	Sitka Correspondence	100.0%
Sitka	Sitka High School	90.6%
Skagway City	Skagway City School	91.5%
Southeast Island	Hollis School	90.3%
Southeast Island	Howard Valentine School	93.5%
Southeast Island	Kasaan School	93.5%
Southeast Island	Naukati School	87.8%
Southeast Island	Port Alexander School	94.5%
Southeast Island	Port Protection School	88.5%
Southeast Island	Thorne Bay School	96.0%
Wrangell City	Evergreen Elementary	95.0%
Wrangell City	Stikine Middle School	95.4%
Wrangell City	Wrangell High School	97.0%
Yakutat City	Icy Bay School	97.1%
Yakutat City	Yakutat School	93.4%
Sealaska Region Average		92.2%

Source: State of Alaska Department of Education and Early Development, 2001- 2002 school year.

Dropout Rates

A dropout is defined as a student who was enrolled in the school at some time during the school year and left the school at some time during that same school year. The dropout rate for Alaska Native students in the Sealaska region for grades 7 through 12 was 11.5 percent for the 2001-2002 school year. This compares to all other students in the Sealaska region who dropped out at a rate of 3.1 percent. Several regions' dropout rates appear low, and zero dropouts in a region are unlikely.

Table 68
Sealaska Region Dropout Rates for Grades 7 through 12
2001-2002 School Year

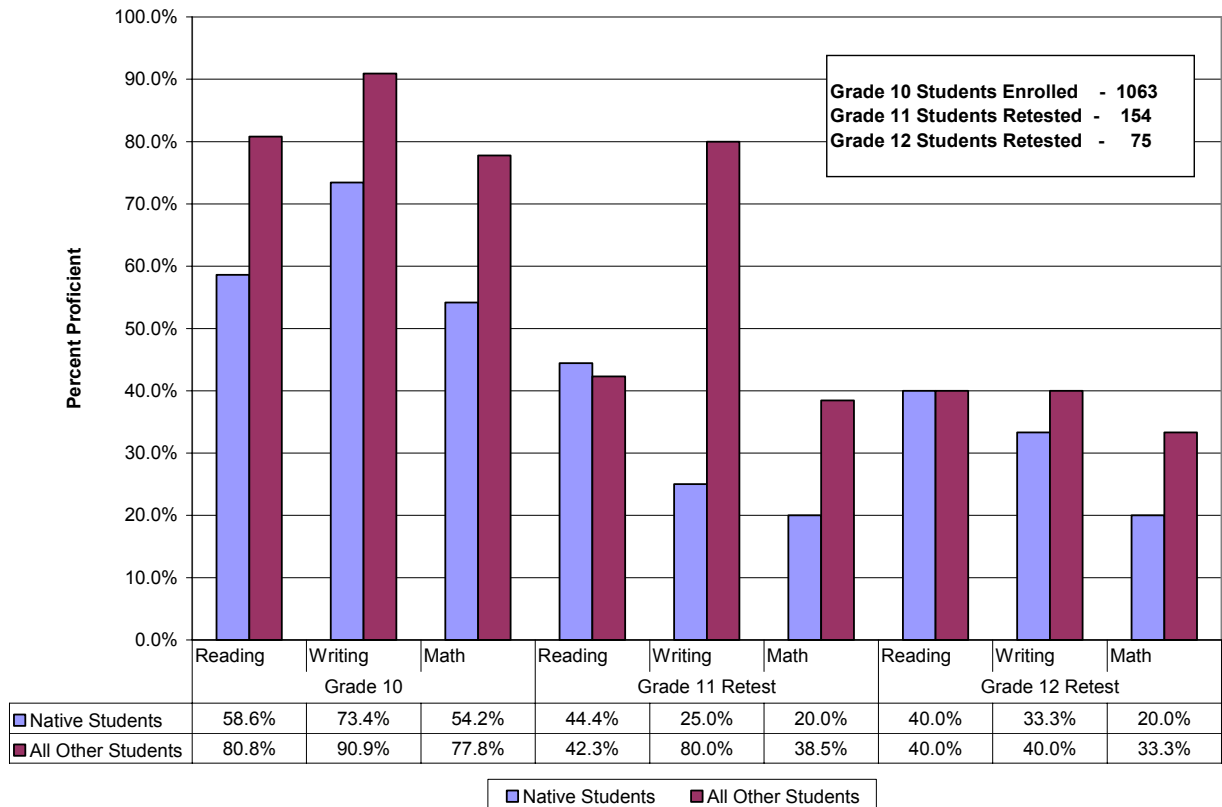
District	School Name	Alaska Native			All Other Students			Total	Total	% Total
		Enrollment	Dropouts	% Dropouts	Enrollment	Dropouts	% Dropouts	Enrollment	Dropouts	Dropouts
Annette Island	Leask Middle School	44	0	0.0	1	0	0.0	45	0	0.0
Annette Island	Metiakatia High School	95	0	0.0	1	0	0.0	96	0	0.0
Chatham	Angoon Elementary School	0	4	na	0	0	na	0	4	na
Chatham	Angoon School	61	0	0.0	7	0	0.0	68	0	0.0
Chatham	Cube Cove School	0	0	na	5	0	0.0	5	0	0.0
Chatham	Gustavus School	3	0	0.0	15	0	0.0	18	0	0.0
Chatham	Klukwan School	6	0	0.0	6	0	0.0	12	0	0.0
Chatham	Tenakee Springs School	0	0	na	4	0	0.0	4	0	0.0
Craig	Craig Correspondence	22	0	0.0	52	0	0.0	74	0	0.0
Craig	Craig High School	42	0	0.0	55	1	1.8	97	1	1.0
Craig	Craig Middle School	30	0	0.0	35	0	0.0	65	0	0.0
Craig	PACE Charter	12	0	0.0	22	0	0.0	34	0	0.0
Haines	Haines Correspondence	1	0	0.0	3	0	0.0	4	0	0.0
Haines	Haines High School	26	5	19.2	106	10	9.4	132	15	11.4
Haines	Haines Junior High School	4	0	0.0	48	0	0.0	52	0	0.0
Haines	Mosquito Lake Elementary	0	0	na	2	0	0.0	2	0	0.0
Hoonah	Hoonah Jr/Sr High School	74	0	0.0	35	0	0.0	109	0	0.0
Hydaburg	Hydaburg Jr/Sr High School	47	2	4.3	3	0	0.0	50	2	4.0
Juneau	Dzantik'i Heeni Middle School	114	0	0.0	358	0	0.0	472	0	0.0
Juneau	Floyd Dryden Middle School	76	0	0.0	297	0	0.0	373	0	0.0
Juneau	Johnson Youth Center	13	0	0.0	16	0	0.0	29	0	0.0
Juneau	Juneau District Corresp. School	4	0	0.0	28	0	0.0	32	0	0.0
Juneau	Juneau-Douglas High School	281	75	26.7	1,356	123	9.1	1,637	198	12.1
Juneau	Yaakoosge Daakahidi Alt. H.S.	43	0	0.0	52	0	0.0	95	0	0.0
Kake	Kake High School	77	1	1.3	25	0	0.0	102	1	1.0
Ketchikan	Ketchikan Correspondence	6	2	33.3	17	8	47.1	23	10	43.5
Ketchikan	Ketchikan High School	107	7	6.5	548	11	2.0	655	18	2.7
Ketchikan	Revilla Jr/Sr High School	52	19	36.5	81	20	24.7	133	39	29.3
Ketchikan	Schoenbar Middle School	83	0	0.0	324	0	0.0	407	0	0.0
Klawock	Klawock City School	49	0	0.0	40	0	0.0	89	0	0.0
Pelican	Pelican School	2	0	0.0	3	0	0.0	5	0	0.0
Petersburg	Mitkof Middle School	19	0	0.0	87	0	0.0	106	0	0.0
Petersburg	Petersburg High School	26	4	15.4	194	4	2.1	220	8	3.6
Sitka	Blatchley Middle School	66	0	0.0	175	0	0.0	241	0	0.0
Sitka	Pacific High School	33	17	51.5	19	4	21.1	52	21	40.4
Sitka	Sitka Correspondence	3	1	33.3	27	1	3.7	30	2	6.7
Sitka	Sitka High School	71	5	7.0	349	10	2.9	420	15	3.6
Skagway	Skagway City School	5	0	0.0	46	1	2.2	51	1	2.0
Southeast Island	Hollis School	0	0	na	4	0	0.0	4	0	0.0
Southeast Island	Howard Valentine School	0	0	na	15	0	0.0	15	0	0.0
Southeast Island	Hyder School	0	0	na	5	0	0.0	5	0	0.0
Southeast Island	Kasaan School	4	3	75.0	3	0	0.0	7	3	42.9
Southeast Island	Naukati School	0	0	na	18	1	5.6	18	1	5.6
Southeast Island	Port Alexander School	0	0	na	6	0	0.0	6	0	0.0
Southeast Island	Port Protection School	4	0	0.0	6	1	16.7	10	1	10.0
Southeast Island	SE Island Corresp.	0	0	na	11	0	0.0	11	0	0.0
Southeast Island	Thorne Bay School	1	0	0.0	39	0	0.0	40	0	0.0
Wrangell	Stikine Middle School	7	0	0.0	60	0	0.0	67	0	0.0
Wrangell	Wrangell High School	30	3	10.0	122	0	0.0	152	3	2.0
Yakutat	Icy Bay School	0	0	na	3	0	0.0	3	0	0.0
Yakutat	Yakutat School	47	0	0.0	27	0	0.0	74	0	0.0
Sealaska Region Total		1,690	148	8.8	4,761	195	4.1	6,451	343	5.3

Source: State of Alaska Department of Education and Early Development, 2001-2002 school year. Several regions' dropout rates appear low, and zero dropouts in a region are unlikely.

High School Graduation Qualifying Exams

Sealaska region high school graduation qualifying exam results were compiled for the ethnicities and schools that had releasable data. Some grade and subject data were not released. Due to the small number of students who retake the exam in the 11th and 12th grade, much of this data has been suppressed.

Figure 43
Sealaska Region High School Graduation Qualifying Exam Results
2002-2003 School Year



Source: State of Alaska Department of Education and Early Development. High school students are first offered the High School Graduation Qualifying Exam in the 10th grade. Students may retake the tests for the subjects which they were not proficient in the 11th or 12th grade. Once a student passes the subject matter, they need not retake the exams. Exam results listed here are for the schools and ethnicity categories for which data was released. The number of students retesting is based on the greatest number of students in a given subject matter.

Graduation Rates

Alaska Natives in the Sealaska geographic region graduated at the rate of 81.6 percent compared to all other ethnicities which had a graduation rate of 89.7 percent for the 2001-2002 school year. Graduation rates (until 2002-2003) were calculated by dividing the number of graduates (regular diploma recipients) by the number of 12th grade students that were enrolled on the last day of school. Students receiving Certificates of Attendance are not counted as graduates but are counted in the denominator if they were enrolled on the last day.

Table 69
Sealaska Region Graduation Rates
2001-2002 School Year

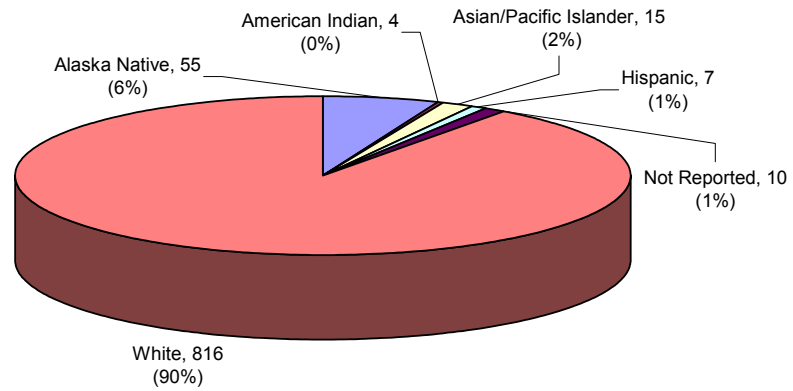
District	School Name	Alaska Natives			All Other Students			Total Enrollment	Total Graduates
		Enrollment	Graduates	% Graduates	Enrollment	Graduates	% Graduates		
Annette Island	Metlakatla High School	20	16	80.0	0	0	na	20	16
Chatham	Angoon School	4	4	100.0	0	1	na	4	5
Chatham	Gustavus School	0	0	na	1	2	200.0	1	2
Chatham	Tenakee Springs School	0	0	na	0	1	na	0	1
Craig	Craig Correspondence	1	0	0.0	3	3	100.0	4	3
Craig	Craig High School	9	9	100.0	12	12	100.0	21	21
Craig	PACE Charter	3	3	100.0	6	3	50.0	9	6
Haines	Haines Correspondence	1	0	0.0	1	0	0.0	2	0
Haines	Haines High School	5	2	40.0	31	21	67.7	36	23
Hoonah	Hoonah Jr/Sr High School	8	9	112.5	10	9	90.0	18	18
Hydaburg	Hydaburg Jr/Sr High School	10	8	80.0	0	0	na	10	8
Juneau	Juneau District Corresp. School	0	0	na	3	0	0.0	3	0
Juneau	Yaakoosge Daakahidi Alt. H.S.	13	0	0.0	17	0	0.0	30	0
Juneau	Juneau-Douglas High School	41	48	117.1	281	285	101.4	322	333
Kake	Kake High School	7	5	71.4	6	3	50.0	13	8
Ketchikan	Ketchikan Correspondence	0	0	na	2	0	0.0	2	0
Ketchikan	Ketchikan High School	13	7	53.8	120	109	90.8	133	116
Ketchikan	Revilla Jr/Sr High School	6	2	33.3	12	10	83.3	18	12
Klawock	Klawock City School	9	7	77.8	7	6	85.7	16	13
Pelican	Pelican School	1	0	0.0	1	0	0.0	2	0
Petersburg	Petersburg High School	6	7	116.7	51	43	84.3	57	50
Sitka	Sitka Correspondence	1	0	0.0	1	0	0.0	2	0
Sitka	Pacific High School	14	12	85.7	4	3	75.0	18	15
Sitka	Sitka High School	18	12	66.7	66	62	93.9	84	74
Skagway	Skagway City School	1	1	100.0	6	6	100.0	7	7
Southeast Island	Howard Valentine School	0	0	na	2	3	150.0	2	3
Southeast Island	Hyder School	0	0	na	2	2	100.0	2	2
Southeast Island	Naukatli School	0	0	na	3	3	100.0	3	3
Southeast Island	Port Alexander School	0	0	na	2	2	100.0	2	2
Southeast Island	Port Protection School	0	0	na	1	1	100.0	1	1
Southeast Island	SE Island Corresp.	0	0	na	4	1	25.0	4	1
Southeast Island	Thorne Bay School	0	0	na	4	2	50.0	4	2
Wrangell	Wrangell High School	7	6	85.7	16	16	100.0	23	22
Yakutat	Yakutat School	9	11	122.2	6	2	33.3	15	13
Sealaska Region Total		207	169	81.6	681	611	89.7	888	780

Source: State of Alaska Department of Education and Early Development, 2001-2002 school year. Percent of graduates that are greater than 100 may be due to differing time frames for gathering enrollment and graduates data or students who graduate during the school year and are not counted enrolled on the last day of school.

Teacher Ethnicity

There were 907 teachers in the Sealaska region schools for the 2002-2003 school year. Fifty-five teachers were Alaska Native.

Figure 44
Sealaska Region Teacher Ethnicity
2002-2003 School Year



Source: State of Alaska Department of Education and Early Development.