

# ***Alaska Native K-12 Education Indicators***

**NANA**

***Prepared for:  
First Alaskans Institute  
Alaska Native Policy Center***

***Prepared by:***



***Juneau Anchorage***

***This document contains pages 141 through 147 of the full report.  
Please visit <http://www.firstalaskans.org>  
for a full copy of the report.***

***October 2003  
Second Printing March 2004***

# NANA Region

## Population

Communities included in the NANA region for determining population are those communities served by the Northwest Arctic Borough School District. Communities are as follows:

Ambler city	Kotzebue city
Buckland city	Noatak CDP
Deering city	Noorvik city
Kiana city	Red Dog Mine CDP
Kivalina city	Selawik city
Kobuk city	Shungnak city

*Note:* CDP is the U.S. Census Bureau abbreviation for Census Designated Place.

Almost 84 percent of the NANA region population was identified as Alaska Native Alone or in combination with some other race for Census 2000. The Alaska Native population is greater than shown in the following table, but Census 2000 sampling and suppression of data for communities with small populations causes an undercount of the actual population.

**Table 60**  
**NANA Region Demographics Profile**

NANA Region Demographics Summary				
	Total Population		Alaska Native Alone or in combination with some other race	
	Number	Percent	Number	Percent
<b>Population</b>	6,929		5,814	
<b>Gender</b>				
Male	3,616	52.2	2,993	51.5
Female	3,313	47.8	2,821	48.5
<b>Age</b>				
< 5 years	771	11.1	682	11.7
5 - 14	1,724	24.9	1,598	27.5
15 - 19	703	10.1	646	11.1
20 - 34	1,391	20.1	1,125	19.3
35 - 44	951	13.7	735	12.6
45 - 64	1,037	15.0	707	12.2
65 or more years	352	5.1	321	5.5

*Source:* U.S. Census Bureau, Census 2000. Total population includes Alaska Natives and in combination with some other race.

In the NANA region, the percentage of the Alaska Native population that is of school age (ages 5 through 19) is larger than the total school age population, 38.6 percent compared to 35 percent.

## Enrollment by School District

There is one school district in the NANA geographic region with 13 schools. Native enrollment for the school year 2002-2003 was 90.9 percent of the total 2,172 enrollment.

**Table 61**  
**NANA Region Enrollment by School**  
**2002-2003 School Year**

District	School	Enrollment				
		Native	Percent Native	All Other	Percent All Other	Total
Northwest Arctic Borough Schools	<i>Ambler School</i>	90	100.0	-	0.0	90
	<i>Aqqaluk High/Noorvik Elementary</i>	228	99.6	1	0.4	229
	<i>Buckland School</i>	170	100.0	-	0.0	170
	<i>Davis-Ramoth School</i>	265	98.5	4	1.5	269
	<i>Deering School</i>	44	100.0	-	0.0	44
	<i>June Nelson Elementary</i>	345	80.8	82	19.2	427
	<i>Kiana School</i>	122	98.4	2	1.6	124
	<i>Kobuk School</i>	39	92.9	3	7.1	42
	<i>Kotzebue Middle/High School</i>	302	75.3	99	24.7	401
	<i>McQueen School</i>	127	100.0	-	0.0	127
	<i>Napaaqtugmiut School</i>	156	96.3	6	3.7	162
	<i>NW Arctic Dist Wide Corresp.</i>	11	100.0	-	0.0	11
	<i>Shungnak School</i>	76	100.0	-	0.0	76
<b>NANA Region Total</b>		<b>1,975</b>	<b>90.9</b>	<b>197</b>	<b>9.1</b>	<b>2,172</b>

Source: State of Alaska Department of Education and Early Development.

## List of Schools Making AYP

The following schools made Adequate Yearly Progress for the school year 2002-2003:

District	School
Northwest Arctic Borough Schools	<i>Deering School - Deering</i> <i>NW Arctic Dist Wide Corresp. - Kotzebue</i>

## List of Schools Not Making AYP

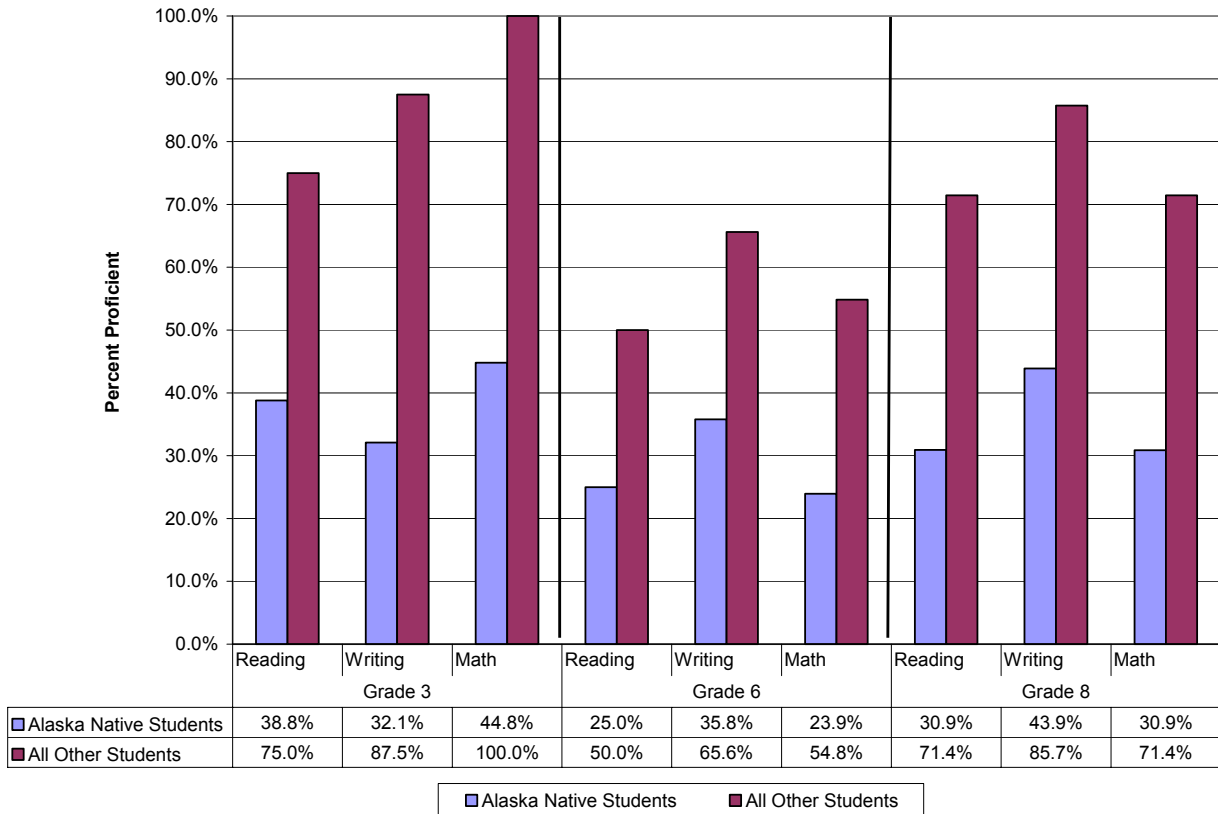
The following schools did not make Adequate Yearly Progress for the school year 2002-2003:

District	School	Reason for not Meeting AYP
Northwest Arctic Borough Schools	<i>Ambler School - Ambler</i>	1. Language Arts scores for school as a whole, Alaska Native, economically disadvantaged, and limited English proficiency students. 2. Math scores for school as a whole, Alaska Native, economically disadvantaged, and limited English proficiency students.
	<i>Aqqaluk High/Noorvik Elementary - Noorvik</i>	1. Language Arts scores for school as a whole, Alaska Native, and economically disadvantaged students. 2. Math scores for school as a whole, Alaska Native, and economically disadvantaged students.
	<i>Buckland School - Buckland</i>	1. Language Arts scores for school as a whole, Alaska Native, and economically disadvantaged students. 2. Math scores for school as a whole, Alaska Native, and economically disadvantaged students.
	<i>Davis-Ramoth School - Selawik</i>	1. Participation rates for school as a whole, Alaska Native, economically disadvantaged, and limited English proficiency students. 2. Language Arts scores for school as a whole, Alaska Native, economically disadvantaged students, and limited English proficiency students. 3. Math scores for school as a whole, Alaska Native, and economically disadvantaged students.
	<i>June Nelson Elementary - Kotzebue</i>	1. Participation rates for students with disabilities. 2. Language Arts scores for school as a whole, Alaska Native, and economically disadvantaged students. 3. Math scores for Alaska Native students.
	<i>Kiana School - Kiana</i>	1. Participation rates for economically disadvantage students. 2. Language Arts scores for school as a whole, Alaska Native, and economically disadvantaged students. 3. Math scores for school as a whole, Alaska Native, and economically disadvantaged students.
	<i>Kobuk School - Kobuk</i>	Language Arts scores for school as a whole and Alaska Native students.
	<i>Kotzebue Middle/High School - Kotzebue</i>	1. Participation rates for school as a whole, Alaska Native, American Indian, economically disadvantaged, students with disabilities, and limited English proficiency students. 2. Language Arts for school as a whole, Alaska Native, economically disadvantaged, students with disabilities, and limited English proficiency students. 3. Math scores for economically disadvantaged students, students with disabilities, and limited English proficiency students.
	<i>McQueen School - Kivalina</i>	1. Language Arts scores for school as a whole, Alaska Native, economically disadvantaged, and limited English proficiency students. 2. Math scores for school as a whole, Alaska Native, economically disadvantaged, and limited English proficiency students.
	<i>Napaaqtugmiut School - Noatak</i>	1. Language Arts scores for school as a whole, Alaska Native, economically disadvantaged, and limited English proficiency students. 2. Math scores for school as a whole, Alaska Native, economically disadvantaged, and limited English proficiency students.
	<i>Shungnak School - Shungnak</i>	1. Language Arts scores for school as a whole, Alaska Native, and economically disadvantaged students. 2. Math scores for school as a whole, Alaska Native, and economically disadvantaged students.

## Education Benchmarks

School districts included with the NANA geographic region consist entirely of the Northwest Arctic Borough Schools.

**Figure 39**  
**NANA Region Benchmark Results**  
**2002-2003 School Year**



Source: State of Alaska Department of Education and Early Development. Missing benchmarks are due to confidential data elements. Due to the suppression and/or absence of data from some schools, benchmark results may not accurately represent the entire region.

## Daily Attendance Rates

The NANA region schools had an average attendance rate of 87.6 percent for the 2001-2002 school year. (See Table 62.) DEED measures attendance rates by taking the sum of all days present for all students in a school for the year and dividing this by the sum of all days present and all days absent for all students in a school for the year. The information is not available by ethnicity and is not yet available for the 2002-2003 school year.

**Table 62**  
**NANA Region Attendance Rates**  
**2001-2002 School Year**

District Name	School Name	Attendance Rate
Northwest Arctic	Ambler School	87.6%
Northwest Arctic	Aqqaluk High/Noorvik Elementary	92.2%
Northwest Arctic	Buckland School	94.5%
Northwest Arctic	Davis-Ramoth School	80.9%
Northwest Arctic	Deering School	91.2%
Northwest Arctic	June Nelson Elementary	85.3%
Northwest Arctic	Kiana School	90.6%
Northwest Arctic	Kobuk School	93.7%
Northwest Arctic	Kotzebue Middle/High School	84.4%
Northwest Arctic	McQueen School	82.0%
Northwest Arctic	Napaaqtugmiut School	92.0%
Northwest Arctic	NW Arctic Dist. Wide Corresp.	100.0%
Northwest Arctic	Shungnak School	89.8%
<b>NANA Region Average</b>		<b>87.6%</b>

Source: State of Alaska Department of Education and Early Development, 2001-2002 school year.

## Dropout Rates

A dropout is defined as a student who was enrolled in the school at some time during the school year and left the school at some time during that same school year. The dropout rate for Alaska Native students in the NANA region for grades 7 through 12 was 7 percent for the 2001-2002 school year. This compares to all other students in the NANA region who dropped out at a rate of zero percent. Several regions' dropout rates appear low, and zero dropouts in a region are unlikely.

**Table 63**  
**NANA Region Dropout Rates for Grades 7 through 12**  
**2001-2002 School Year**

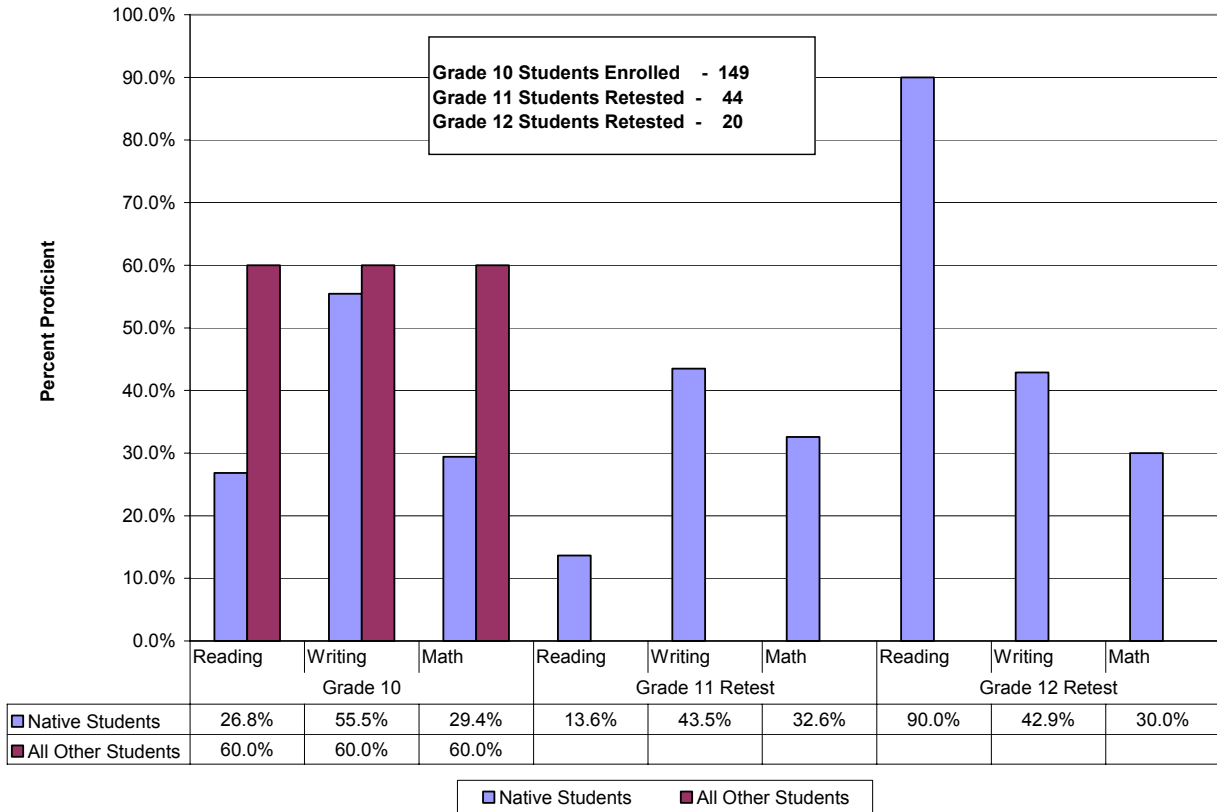
District	School Name	Alaska Native			All Other Students			Total	Total	% Total
		Enrollment	Dropouts	% Dropouts	Enrollment	Dropouts	% Dropouts	Enrollment	Dropouts	Dropouts
Northwest Arctic	Ambler School	44	4	9.1	1	0	0.0	45	4	8.9
Northwest Arctic	Aqqaluk High/Noorvik Elementary	85	6	7.1	1	0	0.0	86	6	7.0
Northwest Arctic	Buckland School	62	1	1.6	0	0	na	62	1	1.6
Northwest Arctic	Davis-Ramoth School	126	14	11.1	2	0	0.0	128	14	10.9
Northwest Arctic	Deering School	20	4	20.0	0	0	na	20	4	20.0
Northwest Arctic	Kiana School	50	4	8.0	1	0	0.0	51	4	7.8
Northwest Arctic	Kobuk School	5	0	0.0	0	0	na	5	0	0.0
Northwest Arctic	Kotzebue Middle/High School	278	9	3.2	43	0	0.0	321	9	2.8
Northwest Arctic	McQueen School	58	2	3.4	0	0	na	58	2	3.4
Northwest Arctic	Napaaqtugmiut School	61	1	1.6	0	0	na	61	1	1.6
Northwest Arctic	NW Arctic Dist Wide Corresp.	7	0	0.0	1	0	0.0	8	0	0.0
Northwest Arctic	Shungnak School	31	13	41.9	0	0	na	31	13	41.9
<b>NANA Region Total</b>		<b>827</b>	<b>58</b>	<b>7.0</b>	<b>49</b>	<b>0</b>	<b>0.0</b>	<b>876</b>	<b>58</b>	<b>6.6</b>

Source: State of Alaska Department of Education and Early Development, 2001-2002 school year. Several regions' dropout rates appear low, and zero dropouts in a region are unlikely.

## High School Graduation Qualifying Exams

NANA region high school graduation qualifying exam results were compiled for the ethnicities and schools that had releasable data. Some grade and subject data were not released. Due to the small number of students who retake the exam in the 11<sup>th</sup> and 12<sup>th</sup> grade, much of this data has been suppressed.

**Figure 40**  
**NANA Region High School Graduation Qualifying Exam Results**  
**2002-2003 School Year**



Source: State of Alaska Department of Education and Early Development. High school students are first offered the High School Graduation Qualifying Exam in the 10<sup>th</sup> grade. Students may retake the tests for the subjects which they were not proficient in the 11<sup>th</sup> or 12<sup>th</sup> grade. Once a student passes the subject matter, they need not retake the exams. Exam results listed here are for the schools and ethnic categories for which data was released. The number of students retesting is based on the greatest number of students in a given subject matter.

## Graduation Rates

Alaska Natives in the NANA geographic region graduated at the rate of 75.6 percent compared to all other ethnicities which had a graduation rate of 100 percent for the 2001-2002 school year. Graduation rates (until 2002-2003) were calculated by dividing the number of graduates (regular diploma recipients) by the number of 12<sup>th</sup> grade students that were enrolled on the last day of school. Students receiving Certificates of Attendance are not counted as graduates but are counted in the denominator if they were enrolled on the last day.

**Table 64**  
**NANA Region Graduation Rates**  
**2001-2002 School Year**

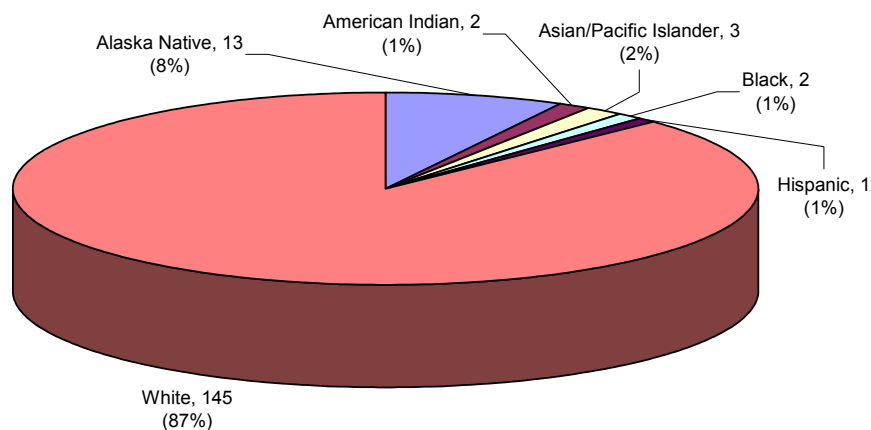
District	School Name	Alaska Natives			All Other Students			Total Enrollment	Total Graduates
		Enrollment	Graduates	% Graduates	Enrollment	Graduates	% Graduates		
Northwest Arctic	Ambler School	3	4	133.3	0	0	na	3	4
Northwest Arctic	Aqqaluk High/Noorvik Element	7	8	114.3	0	0	na	7	8
Northwest Arctic	Buckland School	6	6	100.0	0	0	na	6	6
Northwest Arctic	Davis-Ramoth School	7	6	85.7	1	1	100.0	8	7
Northwest Arctic	Deering School	2	2	100.0	0	0	na	2	2
Northwest Arctic	Kiana School	2	3	150.0	0	0	na	2	3
Northwest Arctic	Kotzebue Middle/High School	38	19	50.0	5	5	100.0	43	24
Northwest Arctic	McQueen School	10	7	70.0	0	0	na	10	7
Northwest Arctic	Napaaqtugmiut School	6	6	100.0	0	0	na	6	6
Northwest Arctic	Shungnak School	1	1	100.0	0	0	na	1	1
<b>NANA Region Total</b>		<b>82</b>	<b>62</b>	<b>75.6</b>	<b>6</b>	<b>6</b>	<b>100.0</b>	<b>88</b>	<b>68</b>

Source: State of Alaska Department of Education and Early Development, 2001-2002 school year. Percent of graduates that are greater than 100 may be due to differing time frames for gathering enrollment and graduates data or students who graduate during the school year and are not counted enrolled on the last day of school.

## Teacher Ethnicity

There were 166 teachers in the NANA region schools for the 2002-2003 school year. Thirteen teachers were Alaska Native.

**Figure 41**  
**NANA Region Teacher Ethnicity**  
**2002-2003 School Year**



Source: State of Alaska Department of Education and Early Development.