

Alaska Native K-12 Education Indicators

Bering Straits

**Prepared for:
First Alaskans Institute
Alaska Native Policy Center**

Prepared by:



Juneau Anchorage

***This document contains pages 55 through 62 of the full report.
Please visit <http://www.firstalaskans.org>
for a full copy of the report.***

**October 2003
Second Printing March 2004**

Bering Straits Region

Population

Communities included in the Bering Straits region for determining population are those communities served by the Bering Straits School and Nome City School Districts. Communities are as follows:

Brevig Mission city	Shaktoolik city
Diomedede city	Shishmaref city
Elim city	St. Michael city
Gambell city	Stebbins city
Golovin city	Teller city
Koyuk city	Unalakleet city
Nome city	Wales city
Port Clarence CDP	White Mountain city
Savoonga city	

Note: CDP is the U.S. Census Bureau abbreviation for Census Designated Place.

Almost 79 percent of the Bering Straits region population was identified as Alaska Native Alone or in combination with some other race for Census 2000. The Alaska Native population is greater than shown in the following table, but Census 2000 sampling and suppression of data for communities with small populations causes an undercount of the actual population.

Table 25
Bering Straits Region Demographics Profile

Bering Straits Region Demographics Summary				
	Total Population		Alaska Native Alone or in combination with some other race	
	Number	Percent	Number	Percent
Population	9,071		7,126	
Gender				
Male	4,894	54.0	3,805	53.4
Female	4,177	46.0	3,321	46.6
Age				
< 5 years	784	8.6	686	9.6
5 - 14	2,020	22.3	1,771	24.9
15 - 19	836	9.2	745	10.5
20 - 34	1,810	20.0	1,428	20.0
35 - 44	1,418	15.6	982	13.8
45 - 64	1,670	18.4	1,060	14.9
65 or more years	533	5.9	454	6.4

Source: U.S. Census Bureau, Census 2000. Total population includes Alaska Natives and in combination with some other race.

The percentage of the Alaska Native population that is school age (ages 5 through 19) is much larger than the percentage of Bering Straits' population that is school aged, 35.4 percent compared to 31.5 percent.

Enrollment by School District

There are two school districts in the Bering Straits area with 19 schools. Native enrollment was an average of 87.3 percent of the total enrollment of 2,497 for the school year 2002-2003.

Table 26
Bering Straits Region Enrollment by School
2002-2003 School Year

District	School	Enrollment				Total
		Native	Percent Native	All Other	Percent All Other	
Bering Strait Schools	Aniguiin School	97	100.0	-	0.0	97
	Anthony A. Andrews School	143	99.3	1	0.7	144
	Brevig Mission School	96	95.0	5	5.0	101
	Diomede School	39	100.0	-	0.0	39
	Gambell Schools	176	100.0	-	0.0	176
	Hogarth Kingeekuk Memorial School	201	100.0	-	0.0	201
	James C. Isabell School	75	98.7	1	1.3	76
	Koyuk-Malemute School	120	100.0	-	0.0	120
	Martin L. Olson School	48	96.0	2	4.0	50
	Shaktoolik School	57	100.0	-	0.0	57
	Shishmaref School	172	99.4	1	0.6	173
	Tukumgailnguq School	203	99.5	1	0.5	204
	Unalakleet Schools	195	92.9	15	7.1	210
	Wales School	46	100.0	-	0.0	46
	White Mountain School	55	93.2	4	6.8	59
Nome City Schools	Anvil City Science Academy	16	38.1	26	61.9	42
	Nome Elementary	270	66.5	136	33.5	406
	Nome Youth Facility	9	100.0	-	0.0	9
	Nome-Beltz Jr/Sr High	161	56.1	126	43.9	287
Bering Straits Total	2,179	87.3	318	12.7	2,497	

Source: State of Alaska Department of Education and Early Development.

List of Schools Making AYP

The following schools made Adequate Yearly Progress for the school year 2002-2003:

District	School
Bering Strait Schools	Unalakleet Schools - Unalakleet
	Wales School - Wales
	White Mountain School - White Mountain
Nome City Schools	Anvil City Science Academy - Nome
	Nome Youth Facility - Nome

List of Schools Not Making AYP

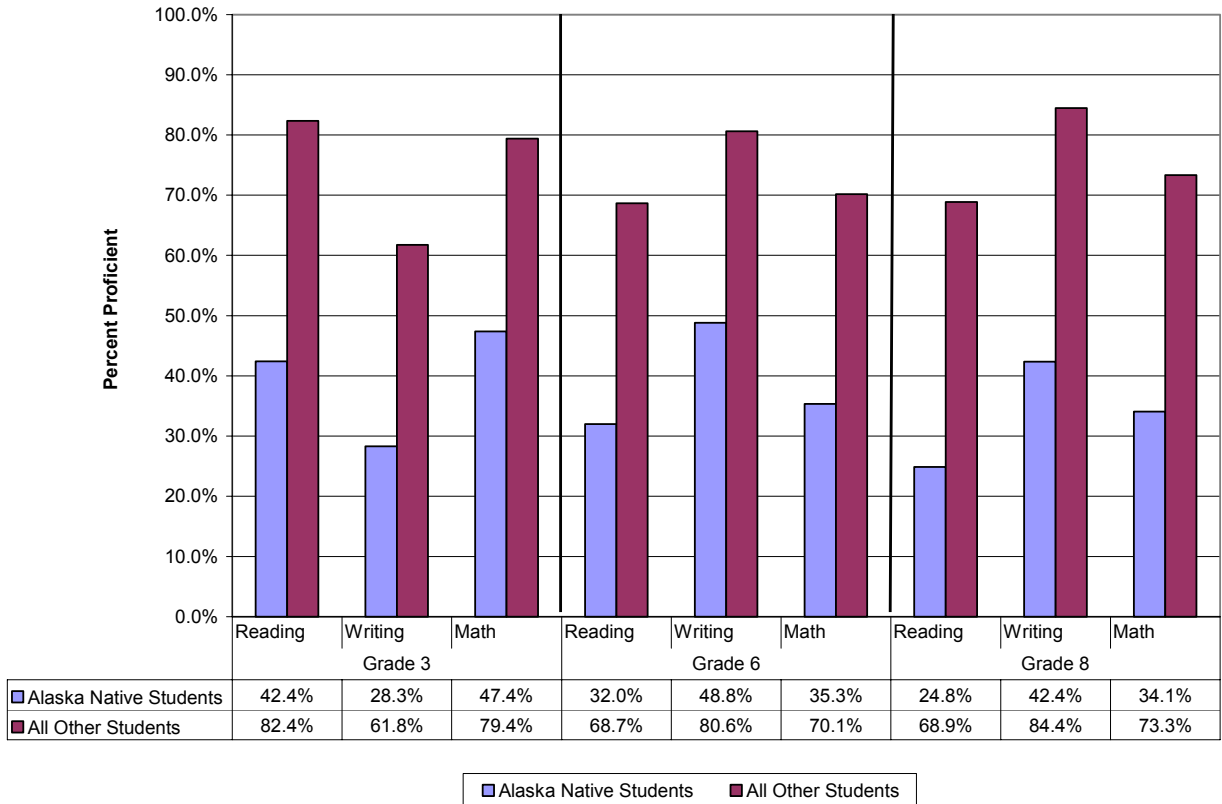
The following schools did not make Adequate Yearly Progress for the school year 2002-2003:

District	School	Reason for not Meeting AYP
Bering Strait Schools	<i>Aniguiin School - Elim</i>	1. Language Arts scores for school as a whole, Alaska Native, and economically disadvantaged students. 2. Math scores for school as a whole, Alaska Native, and economically disadvantaged.
	<i>Anthony A. Andrews School - St. Michael</i>	1. Language Arts scores for school as a whole, Alaska Native, economically disadvantaged, and limited English proficiency students. 2. Math scores for school as a whole, Alaska Native, economically disadvantaged, and limited English proficiency students.
	<i>Brevig Mission School - Brevig Mission</i>	1. Participation rates for school as a whole, Alaska Native, economically disadvantaged, and limited English proficiency students. 2. Language Arts scores for school as a whole, Alaska Native, economically disadvantaged, and limited English proficiency students. 3. Math scores for school as a whole, Alaska Native, economically disadvantaged, and limited English proficiency students.
	<i>Diomedede School - Diomedede</i>	1. Language Arts scores for school as a whole. 2. Math scores for school as a whole.
	<i>Gambell Schools - Gambell</i>	1. Language Arts scores for school as a whole, Alaska native, economically disadvantaged, and limited English proficiency students. 2. Math scores for school as a whole, Alaska Native, economically disadvantaged, limited English proficiency students.
	<i>Hogarth Kingeekuk Memorial School - Savoogna</i>	1. Participation rates for school as a whole, Alaska Native, economically disadvantaged, and limited English proficiency students. 2. Language Arts scores for school as a whole, Alaska Native, economically disadvantaged, and limited English proficiency
	<i>James C. Isabell School - Teller</i>	Participation rates for school as a whole, Alaska Native, and economically disadvantaged students.
	<i>Koyuk-Malemute School - Koyuk</i>	1. Language Arts scores for school as a whole, Alaska native, economically disadvantaged, and limited English proficiency students. 2. Math scores for school as a whole, Alaska Native, economically disadvantaged, limited English proficiency students.
	<i>Martin L. Olson School - Golovin</i>	Language Arts scores for school as a whole, Alaska Native, and economically disadvantaged students.
	<i>Shaktoolik School - Shaktoolik</i>	Language Arts scores for school as a whole, Alaska Native, and economically disadvantaged students.
	<i>Shishmaref School - Shishmaref</i>	1. Language Arts scores for school as a whole, Alaska Native, economically disadvantaged, and limited English proficiency students. 2. Math scores for school as a whole, Alaska Native, economically disadvantaged, limited English proficiency students.
	<i>Tukurngailnguq School - Stebbins</i>	1. Language Arts scores for school as a whole, Alaska Native, economically disadvantaged, and limited English proficiency students. 2. Math scores for school as a whole, Alaska Native, economically disadvantaged, limited English proficiency students.
	Nome City Schools	<i>Nome Elementary - Nome</i>
<i>Nome-Beltz Jr/Sr High - Nome</i>		1. Language Arts scores for economically disadvantaged students. 2. Math scores for Alaska Native students.

Education Benchmarks

School districts included in the Bering Straits geographic region include Bering Strait Schools and the Nome City Schools.

Figure 18
Bering Straits Region Benchmark Results
2002-2003 School Year



Source: State of Alaska Department of Education and Early Development. Missing benchmarks are due to confidential data elements. Due to the suppression and/or absence of data from some schools, benchmark results may not accurately represent the entire region.

Daily Attendance Rates

The Bering Strait region schools had average attendance rates of 90.5 percent for the 2001-2002 school year. (See Table 27.) DEED measures attendance rates by taking the sum of all days present for all students in a school for the year and dividing this by the sum of all days present and all days absent for all students in a school for the year. The information is not available by ethnicity and is not yet available for the 2002-2003 school year.

Table 27
Bering Straits Region Attendance Rates
2001-2002 School Year

District Name	School Name	Attendance Rate
Bering Strait	Aniguiin School	90.7%
Bering Strait	Anthony A. Andrews School	92.0%
Bering Strait	Brevig Mission School	89.1%
Bering Strait	Diomedea School	83.1%
Bering Strait	Gambell School	82.6%
Bering Strait	Hogarth Kingeekuk Memorial School	87.7%
Bering Strait	James C. Isabell School	86.5%
Bering Strait	Koyuk-Malemute School	90.7%
Bering Strait	Martin L. Olson School	95.6%
Bering Strait	Shaktoolik School	94.5%
Bering Strait	Shishmaref School	87.2%
Bering Strait	Tukurngailnguq School	91.0%
Bering Strait	Unalakleet School	95.9%
Bering Strait	Wales School	91.2%
Bering Strait	White Mountain School	95.2%
Nome City	Anvil City Science Academy	95.7%
Nome City	Leonard Seppala High School	71.1%
Nome City	Nome Elementary	92.4%
Nome City	Nome-Beltz Jr/Sr High	91.1%
Bering Straits Region Average		90.5%

Source: State of Alaska Department of Education and Early Development, 2001-2002 school year.

Dropout Rates

A dropout is defined as a student who was enrolled in the school at some time during the school year and left the school at some time during that same school year. The dropout rate for Alaska Native students in the Bering Straits region for grades 7 through 12 was 9.3 percent for the 2001-2002 school year. This compares to all other students in the Bering Straits region who dropped out at a rate of 2.4 percent. Several regions' dropout rates appear low, and zero dropouts in a region are unlikely.

Table 28
Bering Straits Region Dropout Rates for Grades 7 through 12
2001-2002 School Year

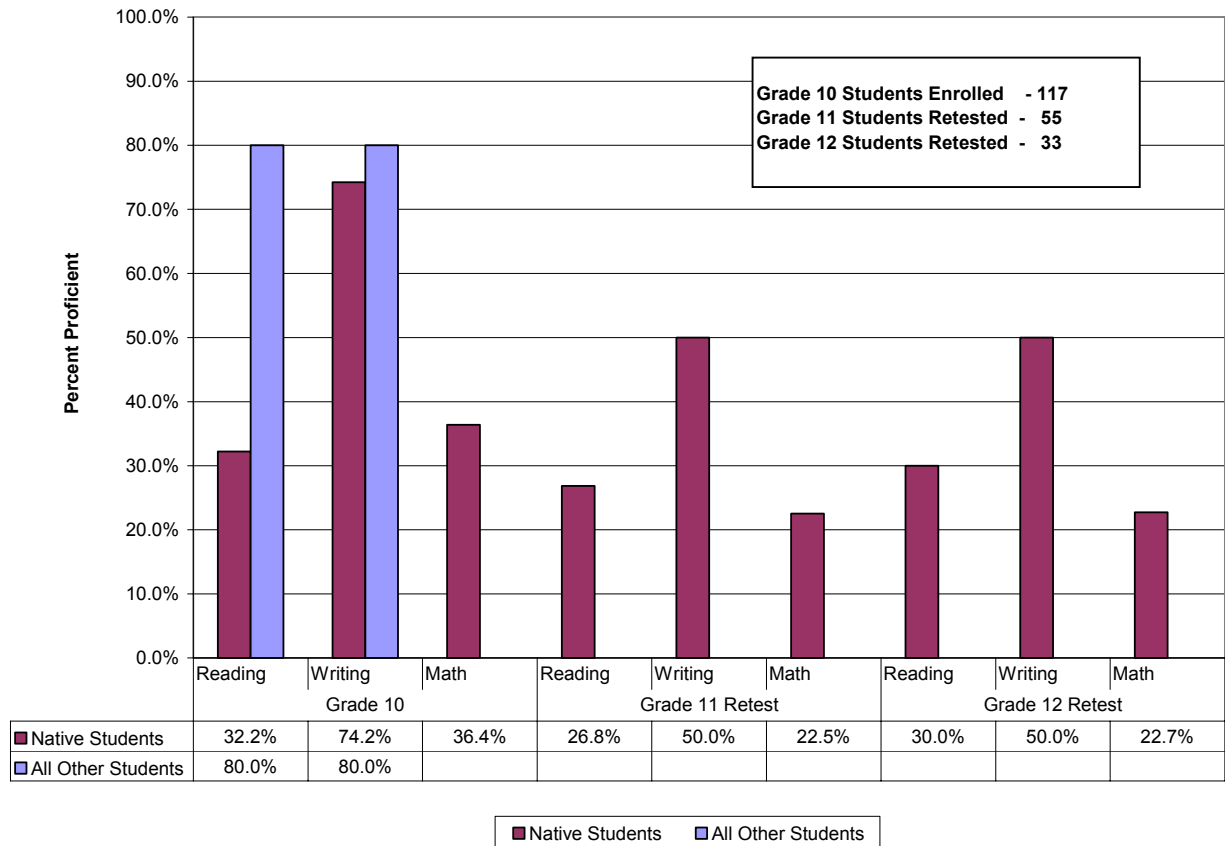
District	School Name	Alaska Native			All Other Students			Total	Total	% Total
		Enrollment	Dropouts	% Dropouts	Enrollment	Dropouts	% Dropouts	Enrollment	Dropouts	Dropouts
Bering Strait	Aniguiin School	43	4	9.3	0	0	na	43	4	9.3
Bering Strait	Anthony A. Andrews School	42	4	9.5	2	0	0.0	44	4	9.1
Bering Strait	Brevig Mission School	35	5	14.3	0	0	na	35	5	14.3
Bering Strait	Diomedea School	15	0	0.0	0	0	na	15	0	0.0
Bering Strait	Gambell Schools	71	12	16.9	1	0	0.0	72	12	16.7
Bering Strait	Hogarth Kingeekuk Memorial H.S.	72	6	8.3	0	0	na	72	6	8.3
Bering Strait	James C. Isabell School	35	1	2.9	0	0	na	35	1	2.9
Bering Strait	Koyuk-Malemute School	43	2	4.7	0	0	na	43	2	4.7
Bering Strait	Martin L. Olson School	28	0	0.0	0	0	na	28	0	0.0
Bering Strait	Shaktolik School	26	1	3.8	0	0	na	26	1	3.8
Bering Strait	Shishmaref School	66	7	10.6	3	0	0.0	69	7	10.1
Bering Strait	Tukurngalinguq School	65	14	21.5	2	0	0.0	67	14	20.9
Bering Strait	Unalakleet Schools	92	3	3.3	0	0	na	92	3	3.3
Bering Strait	Wales School	27	1	3.7	0	0	na	27	1	3.7
Bering Strait	White Mountain School	27	0	0.0	1	0	0.0	28	0	0.0
Nome	Anvil City Science Academy	1	0	0.0	15	0	0.0	16	0	0.0
Nome	Leonard Seppala High School	7	4	57.1	2	4	200.0	9	8	88.9
Nome	Nome Correspondence	1	0	0.0	3	0	0.0	4	0	0.0
Nome	Nome Youth Facility	7	0	0.0	0	0	na	7	0	0.0
Nome	Nome-Beltz Jr/Sr High	91	10	11.0	178	1	0.6	269	11	4.1
Bering Straits Region Total		794	74	9.3	207	5	2.4	1,001	79	7.9

Source: State of Alaska Department of Education and Early Development, 2001-2002 school year. Several regions' dropout rates appear low, and zero dropouts in a region are unlikely.

High School Graduation Qualifying Exams

Bering Straits region high school graduation qualifying exam results were compiled for the ethnicities and schools that had releasable data. Some grade and subject data were not released. Due to the small number of students who retake the exam in the 11th and 12th grade, much of this data has been suppressed.

Figure 19
Bering Straits Region High School Graduation Qualifying Exam Results
2002-2003 School Year



Source: State of Alaska Department of Education and Early Development. High school students are first offered the High School Graduation Qualifying Exam in the 10th grade. Students may retake the tests for the subjects which they were not proficient in the 11th or 12th grade. Once a student passes the subject matter, they need not retake the exams. Exam results listed here are for the schools and ethnicity categories for which data was released. The number of students retesting is based on the greatest number of students in a given subject matter.

Graduation Rates

Alaska Natives in the Bering Straits geographic region graduated at the rate of 92.1 percent compared to all other ethnicities which had a graduation rate of 46.7 percent for the 2001-2002 school year. Graduation rates (until 2002-2003) were calculated by dividing the number of graduates (regular diploma recipients) by the number of 12th grade students that were enrolled on the last day of school. Students receiving Certificates of Attendance are not counted as graduates but are counted in the denominator if they were enrolled on the last day.

Table 29
Bering Straits Region Graduation Rates
2001-2002 School Year

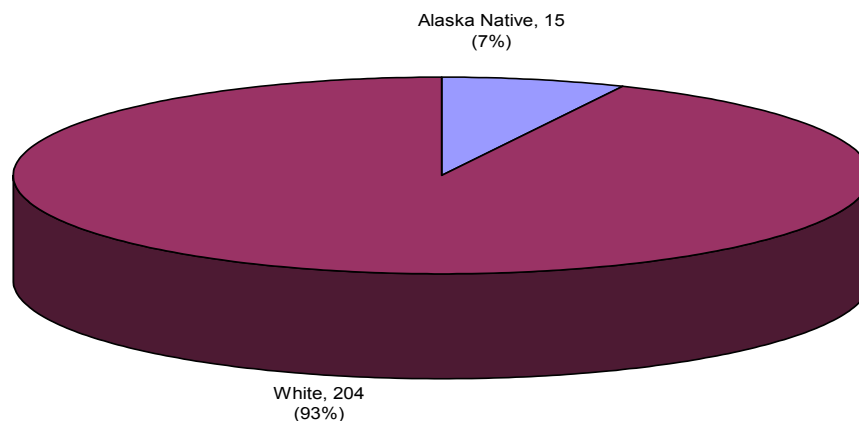
District	School Name	Alaska Natives			All Other Students			Total Enrollment	Total Graduates
		Enrollment	Graduates	% Graduates	Enrollment	Graduates	% Graduates		
Nome	Nome Correspondence	1	0	0.0	1	0	0.0	2	0
Bering Strait	Aniguiin School	2	1	50.0	0	0	na	2	1
Bering Strait	Anthony A. Andrews School	4	2	50.0	0	0	na	4	2
Bering Strait	Brevig Mission School	3	2	66.7	0	0	na	3	2
Bering Strait	Diomedea School	1	1	100.0	0	0	na	1	1
Bering Strait	Gambell Schools	3	2	66.7	0	0	na	3	2
Bering Strait	Hogarth Kingeekuk Memorial S	5	3	60.0	0	0	na	5	3
Bering Strait	James C. Isabell School	1	1	100.0	0	0	na	1	1
Bering Strait	Koyuk-Malemute School	2	3	150.0	0	0	na	2	3
Bering Strait	Martin L. Olson School	3	2	66.7	0	0	na	3	2
Bering Strait	Shaktolik School	3	3	100.0	0	0	na	3	3
Bering Strait	Shishmaref School	7	4	57.1	0	0	na	7	4
Bering Strait	Tukurngailnguq School	6	3	50.0	0	0	na	6	3
Bering Strait	Unalakleet Schools	10	11	110.0	0	2	na	10	13
Bering Strait	Wales School	4	4	100.0	0	0	na	4	4
Bering Strait	White Mountain School	2	2	100.0	1	1	100.0	3	3
Nome	Nome-Beltz Jr/Sr High	6	14	233.3	28	11	39.3	34	25
Bering Straits Region Total		63	58	92.1	30	14	46.7	93	72

Source: State of Alaska Department of Education and Early Development, 2001- 2002 school year. Percent of graduates that are greater than 100 may be due to differing time frames for gathering enrollment and graduates data or students who graduate during the school year and are not counted enrolled on the last day of school.

Teacher Ethnicity

There were 219 teachers in the Bering Straits region schools for the 2002-2003 school year. Fifteen teachers were Alaska Native.

Figure 20
Bering Straits Region Teacher Ethnicity
2002-2003 School Year



Source: State of Alaska Department of Education and Early Development.