

Alaska Native K-12 Education Indicators

Arctic Slope

***Prepared for:
First Alaskans Institute
Alaska Native Policy Center***

Prepared by:



Juneau Anchorage

***This document contains pages 47 through 53 of the full report.
Please visit <http://www.firstalaskans.org>
for a full copy of the report.***

***October, 2003
Second Printing March 2004***

Arctic Slope Region

Population

Communities included in the Arctic Slope region for determining population are those communities served by the North Slope Borough School District. Communities are as follows:

Alpine CDP	Nuiqsut city
Anaktuvuk Pass city	Point Hope city
Atqasuk city	Point Lay CDP
Barrow city	Prudhoe Bay CDP
Kaktovik city	Wainwright city

Note: CDP is the U.S. Census Bureau abbreviation for Census Designated Place.

Almost 73 percent of the Arctic Slope region population was identified as Alaska Native Alone or in combination with some other race for Census 2000. The Alaska Native population is greater than shown in the following table, but Census 2000 sampling and suppression of data for communities with small populations causes an undercount of the actual population.

Table 20
Arctic Slope Region Demographics Profile

Arctic Slope Region Demographics Summary				
	Total Population		Alaska Native Alone or in combination with some other race	
	Number	Percent	Number	Percent
Population	7,372		5,367	
Gender				
Male	3,901	52.9	2,785	51.9
Female	3,471	47.1	2,582	48.1
Age				
< 5 years	704	9.5	570	10.6
5 - 14	1,640	22.2	1,368	25.5
15 - 19	720	9.8	623	11.6
20 - 34	1,435	19.5	996	18.6
35 - 44	1,233	16.7	776	14.5
45 - 64	1,332	18.1	754	14.0
65 or more years	308	4.2	280	5.2

Source: U.S. Census Bureau, Census 2000. Total population includes Alaska Natives and in combination with some other race.

The percentage of the Alaska Native population that is school age (ages 5 through 19), is much larger than the percent of Arctic Slope's population that is school aged, 37.1 percent compared to 32 percent.

Enrollment by School District

There is one school district in the Arctic Slope region with 10 schools. Native enrollment was an average of 82.6 percent of the total 2,115 enrollment for the school year 2002-2003.

Table 21
Arctic Slope Region Enrollment by School
2002-2003 School Year

District	School	Enrollment				
		Native	Percent Native	All Other	Percent All Other	Total
North Slope Borough Schools	<i>Alak School</i>	149	100.0	-	0.0	149
	<i>Barrow High School</i>	239	73.5	86	26.5	325
	<i>Eben Hopson Middle School</i>	194	67.8	92	32.2	286
	<i>Harold Kaveolook School</i>	80	94.1	5	5.9	85
	<i>Ipalook Elementary</i>	419	70.9	172	29.1	591
	<i>Kali School</i>	84	94.4	5	5.6	89
	<i>Meade River School</i>	92	100.0	-	0.0	92
	<i>Nuiqsut Trapper School</i>	143	100.0	-	0.0	143
	<i>Nunamiut School</i>	93	98.9	1	1.1	94
	<i>Tikigaq School</i>	254	97.3	7	2.7	261
Arctic Slope Total		1,747	82.6	368	17.4	2,115

Source: State of Alaska Department of Education and Early Development.

List of Schools Making AYP

The following schools made Adequate Yearly Progress for the school year 2002-2003:

District	School
North Slope Borough Schools	<i>Ipalook Elementary - Barrow</i>

List of Schools Not Making AYP

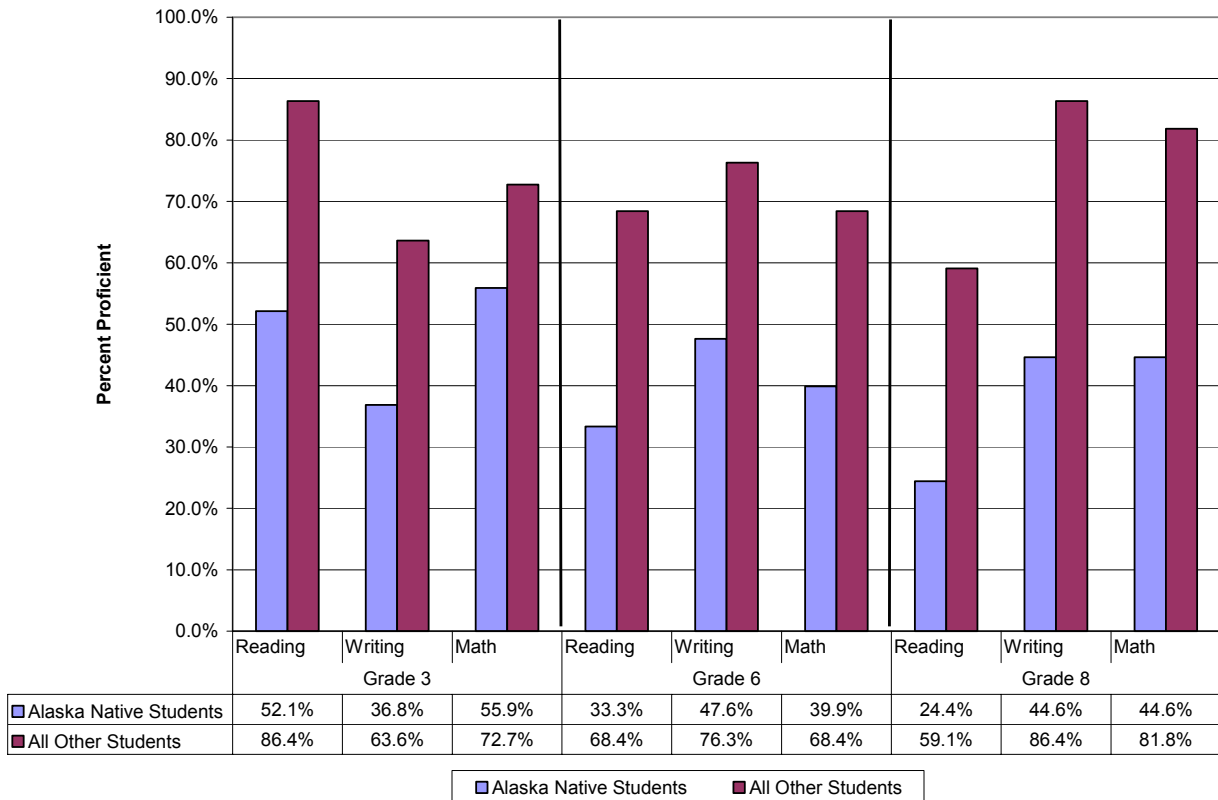
The following schools did not make Adequate Yearly Progress for the school year 2002-2003:

District	School	Reason for not Meeting AYP
North Slope Borough Schools	<i>Alak School - Wainwright</i>	1. Participation rates for school as a whole, Alaska Natives, economically disadvantaged, and limited English proficiency students. 2. Language Arts scores for the same group of students. 3. Math scores for the same group of students.
	<i>Barrow High School - Barrow</i>	1. Participation rates for school as a whole, Alaska Native, students with disabilities, and limited English proficiency students. 2. Language Arts scores for school as a whole, Alaska Native, and limited English proficiency students.
	<i>Eben Hopson Middle School - Barrow</i>	1. Language Arts scores for Alaska Native, students with disabilities, and limited English proficiency students. 2. Math scores for students with disabilities.
	<i>Harold Kaveolook School - Kaktovik</i>	Language Arts scores for students with disabilities.
	<i>Kali School - Point Lay</i>	1. Language Arts scores for school as a whole, Alaska Native, and limited English proficiency students. 2. Math scores for school as a whole, Alaska Native, and limited English proficiency students.
	<i>Meade River School - Atkasuk</i>	1. Participation rates for school as a whole, Alaska Native, and limited English proficiency students. 2. Language Arts scores for school as a whole, Alaska Native, and limited English proficiency students. 3. Math scores for limited English proficiency students.
	<i>Nuiqsut Trapper School - Nuiqsut</i>	1. Language Arts scores for school as a whole, Alaska Native, economically disadvantaged, and limited English proficiency students. 2. Math scores for school as a whole, Alaska Native, economically disadvantaged, and limited English proficiency students.
	<i>Nunamiut School - Anaktuvuk Pass</i>	1. Language Arts scores for school as a whole, Alaska Native, and limited English proficiency students. 2. Math scores for school as a whole, Alaska Native, and limited English proficiency.
	<i>Tikigaq School - Point Hope</i>	1. Language Arts scores for school as a whole, Alaska Native, economically disadvantaged, and limited English proficiency students. 2. Math scores for limited English proficiency students.

Education Benchmarks

The Arctic Slope geographic region consists entirely of the North Slope Borough Schools district.

Figure 15
Arctic Slope Region Benchmark Results
2002-2003 School Year



Source: State of Alaska Department of Education and Early Development. Missing benchmarks are due to confidential data elements. Due to the suppression and/or absence of data from some schools, benchmark results may not accurately represent the entire region.

Daily Attendance Rates

The Arctic Slope region had average attendance rates of 88.9 percent for the 2001-2002 school year. (See Table 22.) DEED measures attendance rates by taking the sum of all days present for all students in a school for the year and dividing this by the sum of all days present and all days absent for all students in a school for the year. The information is not available by ethnicity and is not yet available for the 2002-2003 school year.

Table 22
Arctic Slope Region Attendance Rates
2001-2002 School Year

District Name	School Name	Attendance Rate
North Slope	Alak School	87.6%
North Slope	Barrow High School	85.2%
North Slope	Eben Hopson Middle School	91.1%
North Slope	Harold Kaveolook School	92.3%
North Slope	Ipalook Elementary	89.7%
North Slope	Kali School	90.1%
North Slope	Meade River School	91.6%
North Slope	Nuiqsut Trapper School	85.8%
North Slope	Nunamiut School	88.8%
North Slope	Tikigag School	90.2%
Arctic Slope Region Average		88.9%

Source: State of Alaska Department of Education and Early Development, 2001-2002 school year.

Dropout Rates

A dropout is defined as a student who was enrolled in the school at some time during the school year and left the school at some time during that same school year. The dropout rate for Alaska Native students in the Arctic Slope region for grades 7 through 12 was 4.1 percent for the 2001-2002 school year. This compares to all other students in the Arctic Slope region who dropped out at a rate of 0.6 percent. Several regions' dropout rates appear low, and zero dropouts in a region are unlikely.

Table 23
Arctic Slope Region Dropout Rates for Grades 7 through 12
2001-2002 School Year

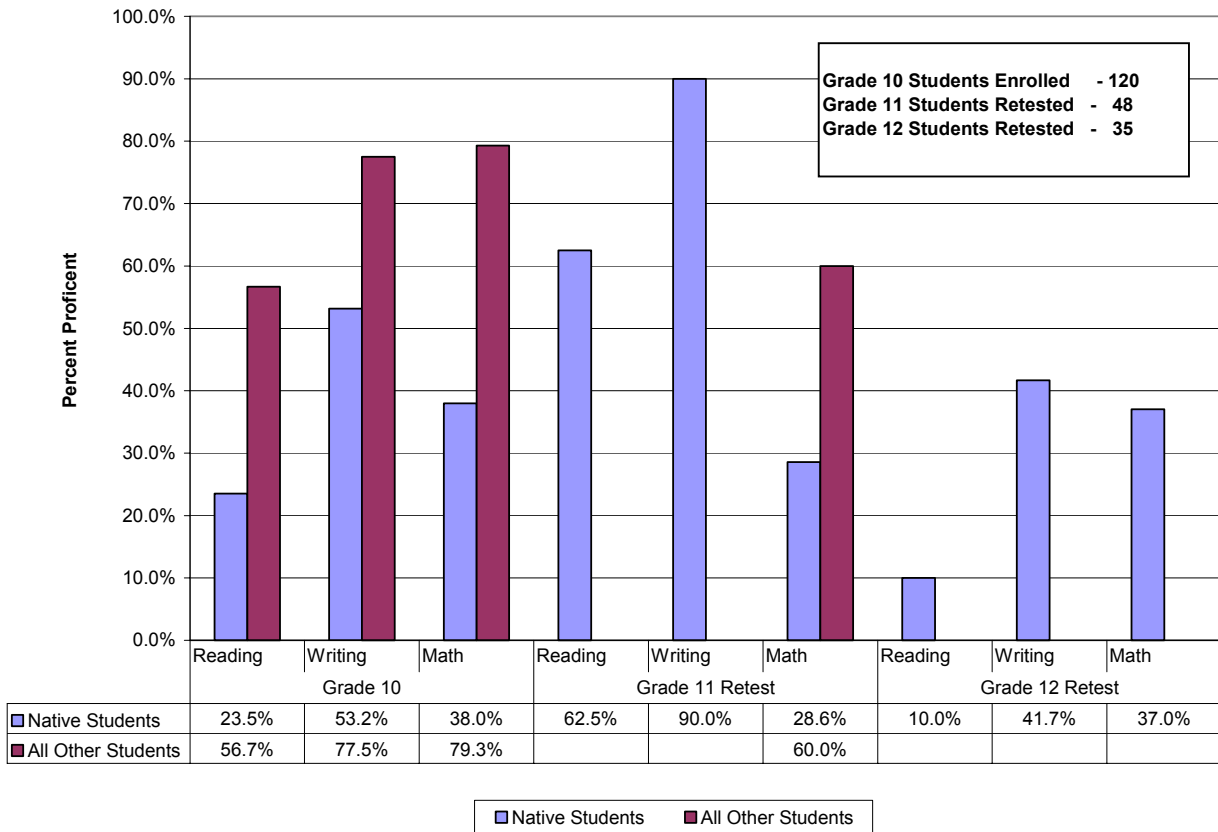
District	School Name	Alaska Native			All Other Students			Total	Total	% Total
		Enrollment	Dropouts	% Dropouts	Enrollment	Dropouts	% Dropouts	Enrollment	Dropouts	Dropouts
North Slope	Alak School	68	2	2.9	1	0	0.0	69	2	2.9
North Slope	Barrow High School	233	8	3.4	101	1	1.0	334	9	2.7
North Slope	Eben Hopson Middle School	114	6	5.3	50	0	0.0	164	6	3.7
North Slope	Harold Kaveolook School	31	0	0.0	2	0	0.0	33	0	0.0
North Slope	Kali School	37	2	5.4	1	0	0.0	38	2	5.3
North Slope	Meade River School	21	3	14.3	0	0	na	21	3	14.3
North Slope	Nuiqsut Trapper School	69	2	2.9	0	0	na	69	2	2.9
North Slope	Nunamiut School	35	3	8.6	1	0	0.0	36	3	8.3
North Slope	Tikigag School	106	3	2.8	4	0	0.0	110	3	2.7
Arctic Slope Region Total		714	29	4.1	160	1	0.6	874	30	3.4

Source: State of Alaska Department of Education and Early Development, 2001-2002 school year. Several regions' dropout rates appear low, and zero dropouts in a region are unlikely.

High School Graduation Qualifying Exams

Arctic Slope region high school graduation qualifying exam results were compiled for the ethnicities and schools that had releasable data. Some grade and subject data were not released. Due to the small number of students who retake the exam in the 11th and 12th grade, much of this data has been suppressed.

Figure 16
Arctic Slope Region High School Graduation Qualifying Exam Results
2002-2003 School Year



Source: State of Alaska Department of Education and Early Development. High school students are first offered the High School Graduation Qualifying Exam in the 10th grade. Students may retake the tests for the subjects which they were not proficient in the 11th or 12th grade. Once a student passes the subject matter, they need not retake the exams. Exam results listed here are for the schools and ethnic categories for which data was released. The number of students retesting is based on the greatest number of students in a given subject matter.

Graduation Rates

Alaska Natives in the Arctic Slope geographic region graduated at the rate of 137.3 percent compared to all other ethnicities which had a graduation rate of 105.6 percent for the 2001-2002 school year. Graduation rates (until 2002-2003) were calculated by dividing the number of graduates (regular diploma recipients) by the number of 12th grade students that were enrolled on the last day of school. Students receiving Certificates of Attendance are not counted as graduates but are counted in the denominator if they were enrolled on the last day.

Table 24
Arctic Slope Region Graduation Rates
2001-2002 School Year

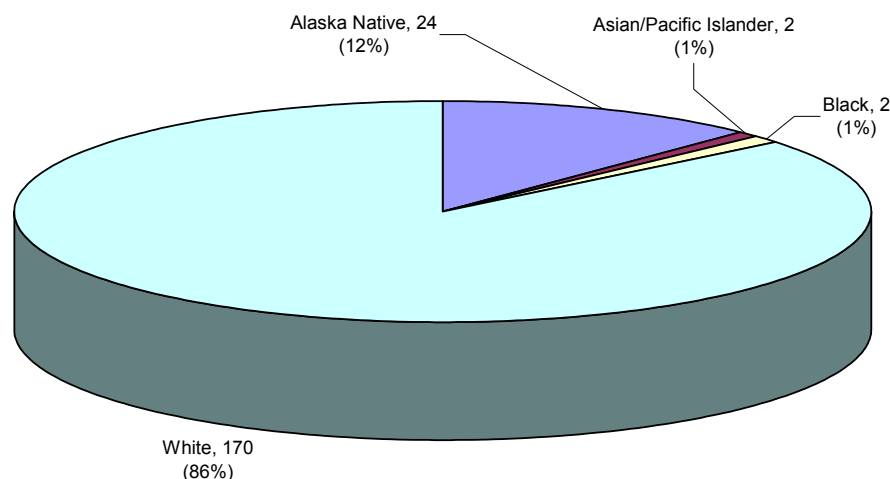
District	School Name	Alaska Natives			All Other Students			Total Enrollment	Total Graduates
		Enrollment	Graduates	% Graduates	Enrollment	Graduates	% Graduates		
North Slope	Alak School	10	10	100.0	0	0	na	10	10
North Slope	Barrow High School	37	54	145.9	16	17	106.3	53	71
North Slope	Harold Kaveolook School	4	4	100.0	1	1	100.0	5	5
North Slope	Kali School	5	6	120.0	0	0	na	5	6
North Slope	Meade River School	3	3	100.0	0	0	na	3	3
North Slope	Nuiqsut Trapper School	7	17	242.9	0	0	na	7	17
North Slope	Nunamiut School	3	4	133.3	1	1	100.0	4	5
North Slope	Tikigag School	14	16	114.3	0	0	na	14	16
Arctic Slope Region Total		83	114	137.3	18	19	105.6	101	133

Source: State of Alaska Department of Education and Early Development, 2001- 2002 school year. Percent of graduates that are greater than 100 may be due to differing time frames for gathering enrollment and graduates data or students who graduate during the school year and are not counted enrolled on the last day of school.

Teacher Ethnicity

There were 198 teachers in the Arctic Slope region schools for the 2002-2003 school year. Twenty-four teachers were Alaska Native.

Figure 17
Arctic Slope Region Teacher Ethnicity
2002-2003 School Year



Source: State of Alaska Department of Education and Early Development.