

Alaska Native K-12 Education Indicators

Aleut

***Prepared for:
First Alaskans Institute
Alaska Native Policy Center***

Prepared by:



Juneau Anchorage

***This document contains pages 41 through 46 of the full report.
Please visit <http://www.firstalaskans.org>
for a full copy of the report.***

***October 2003
Second Printing March 2004***

Aleut Region

Population

Communities included in the Aleut region for determining population are those communities served by the Aleutian Region School, Aleutians East Borough School, Pribilof School, and the Unalaska City School Districts. Communities are as follows:

Adak CDP	Nelson Lagoon CDP
Akutan city	Nikolski CDP
Atka city	Sand Point city
Attu Station CDP	St. George city
Cold Bay city	St. Paul city
False Pass city	Unalaska city
King Cove city	

Note: CDP is the U.S. Census Bureau abbreviation for Census Designated Place.

More than 24 percent of the Aleut region population was identified as Alaska Native Alone or in combination with some other race for Census 2000. The Alaska Native population is greater than shown in the following table, but Census 2000 sampling and suppression of data for communities with small populations causes an undercount of the actual population.

Table 15
Aleut Region Demographics Profile

Aleut Region Demographics Summary				
	Total Population		Alaska Native Alone or in combination with some other race	
	Number	Percent	Number	Percent
Population	8,126		1,955	
Gender				
Male	5,233	64.4	1,080	55.2
Female	2,893	35.6	875	44.8
Age				
< 5 years	373	4.6	151	7.7
5 - 14	761	9.4	363	18.6
15 - 19	416	5.1	216	11.0
20 - 34	2,212	27.2	409	20.9
35 - 44	2,061	25.4	345	17.6
45 - 64	2,107	25.9	361	18.5
65 or more years	196	2.4	110	5.6

Source: U.S. Census Bureau, Census 2000. Total population includes Alaska Natives and in combination with some other race.

The percentage of the Alaska Native population that is school age (ages 5 through 19) is much larger than the percent of the Aleut regions' population that is school age, 29.6 percent compared to 14.5 percent.

Enrollment by School District

There are four school districts in the Aleut geographic region with 14 schools. Native enrollment for this area was an average of 56.8 percent of the total 888 students for the school year 2002-2003.

Table 16
Aleut Region Enrollment by School
2002-2003 School Year

District	School	Enrollment				
		Native	Percent Native	All Other	Percent All Other	Total
Aleutian Region Schools	<i>Adak School</i>	15	83.3	3	16.7	18
	<i>Nikolski School</i>	11	73.3	4	26.7	15
	<i>Yakov E. Netsvetov School</i>	20	100.0	-	0.0	20
Aleutians East Borough Schools	<i>Akutan School</i>	17	85.0	3	15.0	20
	<i>Aleutians East Correspondence School</i>	-	0.0	1	100.0	1
	<i>Cold Bay School</i>	1	6.7	14	93.3	15
	<i>False Pass School</i>	12	80.0	3	20.0	15
	<i>King Cove School</i>	108	94.7	6	5.3	114
	<i>Nelson Lagoon School</i>	9	81.8	2	18.2	11
	<i>Sand Point School</i>	104	80.6	25	19.4	129
Pribilof Schools	<i>St. George School</i>	21	95.5	1	4.5	22
	<i>St. Paul School</i>	107	95.5	5	4.5	112
Unalaska City Schools	<i>Unalaska Elementary</i>	27	15.9	143	84.1	170
	<i>Unalaska Jr/Sr High School</i>	52	23.0	174	77.0	226
Aleut Region Total		504	56.8	384	43.2	888

Source: State of Alaska Department of Education and Early Development.

List of Schools Making AYP

The following schools made Adequate Yearly Progress for the school year 2002-2003:

District	School
Aleutian Region Schools	<i>Adak School - Adak</i> <i>Nikolski School - Nikolski</i> <i>Yakov E. Netsvetov School - Atka</i>
Aleutians East Borough Schools	<i>Akutan School - Akutan</i> <i>Cold Bay School - Cold Bay</i> <i>False Pass School - False Pass</i> <i>Nelson Lagoon School - Nelson Lagoon</i>
Pribilof Schools	<i>St. George School - St. George</i> <i>St. Paul School - St. Paul</i>
Unalaska City Schools	<i>Unalaska Elementary - Unalaska</i> <i>Unalaska Jr/Sr High School - Unalaska</i>

List of Schools Not Making AYP

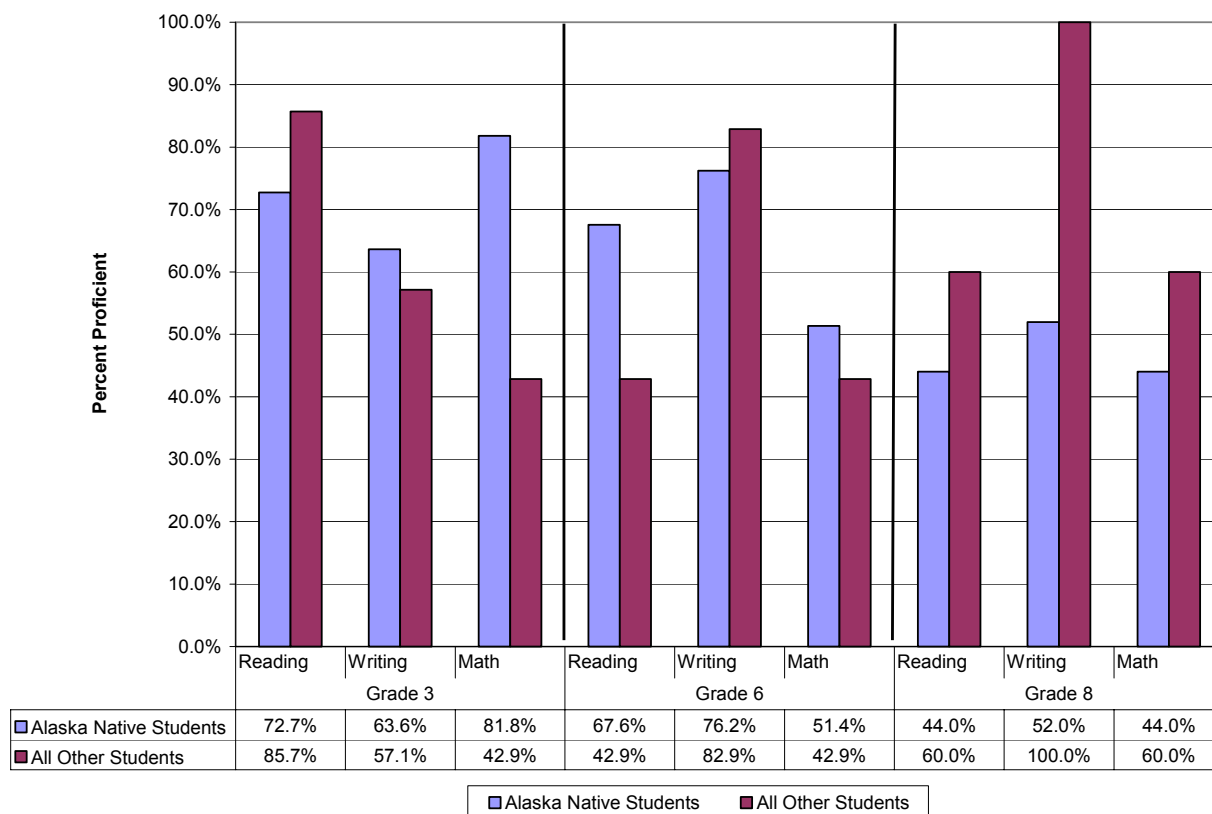
The following schools did not make Adequate Yearly Progress for the school year 2002-2003:

District	School	Reason for not Meeting AYP
Aleutians East Borough Schools	King Cove School - King Cove	Participation rate for school as a whole and for Alaska Native.
	Sand Point School - Sand Point	1. Language Arts scores for students with disabilities. 2. Math scores for students with disabilities.
	Aleutians East Correspondence School - Sand Point	AYP results not available.

Education Benchmarks

School districts included in the Aleut geographic region are the Aleutian Region Schools, Aleutians East Borough Schools, Pribilof Schools, and the Unalaska City Schools. All subjects for grades 3 and 8 of the Aleutians Region School District are not included in the benchmark exam results for confidentiality reasons.

Figure 12
Aleut Region Benchmark Results
2002-2003 School Year



Source: State of Alaska Department of Education and Early Development. Missing benchmarks are due to confidential data elements. Due to the suppression and/or absence of data from some schools, benchmark results may not accurately represent the entire region.

Daily Attendance Rates

The Aleut region schools had average attendance rates of 92.4 percent for the school year 2001-2002. (See Table 17.) DEED measures attendance rates by taking the sum of all days present for all students in a school for the year and dividing this by the sum of all days present and all days absent for all students in a school for the year. The information is not available by ethnicity and is not yet available for the 2002-2003 school year.

Table 17
Aleut Region Attendance Rates
2001-2002 School Year

District Name	School Name	Attendance Rate
Aleutian Region	Adak School	95.7%
Aleutian Region	Nikolski School	72.3%
Aleutian Region	Yakov E. Netsvetov School	96.3%
Aleutians East	Akutan School	92.1%
Aleutians East	Cold Bay School	93.5%
Aleutians East	False Pass School	92.4%
Aleutians East	King Cove School	88.7%
Aleutians East	Nelson Lagoon School	94.1%
Aleutians East	Sand Point School	92.7%
Pribilof	St. George School	93.9%
Pribilof	St. Paul School	92.7%
Unalaska City	Unalaska Elementary	94.2%
Unalaska City	Unalaska Jr/Sr High School	91.8%
Aleut Region Average		92.4%

Source: State of Alaska Department of Education and Early Development, 2001- 2002 school year.

Dropout Rates

A dropout is defined as a student who was enrolled in the school at some time during the school year and left the school at some time during that same school year. Aleut region students dropout rates for grades 7 through 12 for all ethnicities was zero percent. This is unlikely and may be an anomaly in the data. Several regions' dropout rates appear low, and zero dropouts in a region are unlikely.

Table 18
Aleut Region Dropout Rates for Grades 7 through 12
2001-2002 School Year

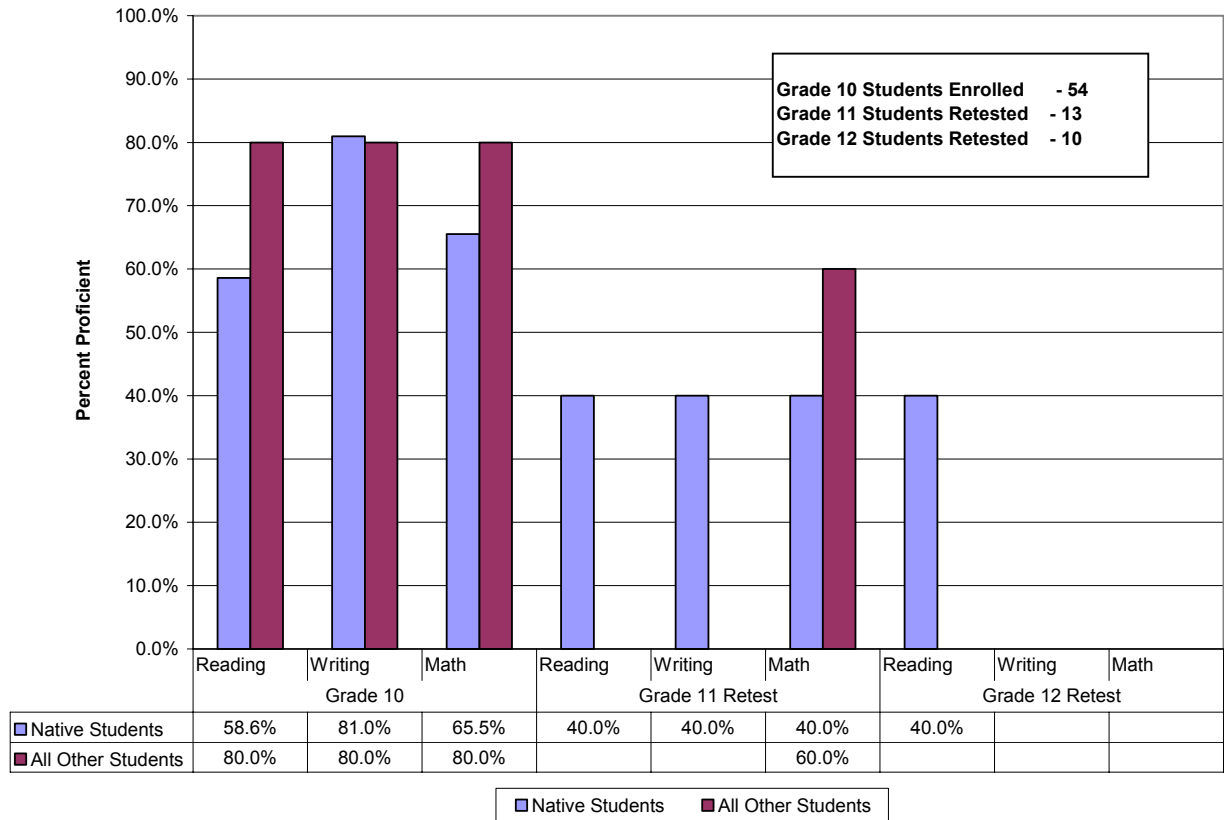
District	School Name	Alaska Native			All Other Students			Total Enrollment	Total Dropouts	% Total Dropouts
		Enrollment	Dropouts	% Dropouts	Enrollment	Dropouts	% Dropouts			
Aleutian Region	Adak School	8	0	0.0	2	0	0.0	10	0	0.0
Aleutian Region	Nikolski School	2	0	0.0	1	0	0.0	3	0	0.0
Aleutian Region	Yakov E. Netsvetov School	10	0	0.0	0	0	na	10	0	0.0
Aleutians East	Akutan School	11	0	0.0	1	0	0.0	12	0	0.0
Aleutians East	Aleutians East Correspondence School	0	0	na	2	0	0.0	2	0	0.0
Aleutians East	Cold Bay School	2	0	0.0	3	0	0.0	5	0	0.0
Aleutians East	False Pass School	1	0	0.0	0	0	na	1	0	0.0
Aleutians East	King Cove School	61	0	0.0	3	0	0.0	64	0	0.0
Aleutians East	Nelson Lagoon School	1	0	0.0	1	0	0.0	2	0	0.0
Aleutians East	Sand Point School	38	0	0.0	5	0	0.0	43	0	0.0
Pribilof	St. George School	12	0	0.0	0	0	na	12	0	0.0
Pribilof	St. Paul School	39	0	0.0	2	0	0.0	41	0	0.0
Unalaska	Unalaska Jr/Sr High School	30	0	0.0	134	0	0.0	164	0	0.0
Aleut Region Total		215	0	0.0	154	0	0.0	369	0	0.0

Source: State of Alaska Department of Education and Early Development, 2001-2002 school year. Several regions' dropout rates appear low, and zero dropouts in a region are unlikely.

High School Graduation Qualifying Exams

Aleut region high school graduation qualifying exam results were compiled for the ethnicities and schools that had releasable data. Some grade and subject data were not released. Due to the small number of students who retake the exam in the 11th and 12th grade, much of this data has been suppressed.

Figure 13
Aleut Region High School Graduation Qualifying Exam Results
2002-2003 School Year



Source: State of Alaska Department of Education and Early Development. High school students are first offered the High School Graduation Qualifying Exam in the 10th grade. Students may retake the tests for the subjects which they were not proficient in the 11th or 12th grade. Once a student passes the subject matter, they need not retake the exams. Exam results listed here are for the schools and ethnic categories for which data was released. The number of students retesting is based on the greatest number of students in a given subject matter.

Graduation Rates

Alaska Natives in the Aleut geographic region graduated at the rate of 93.8 percent compared to all other ethnicities which had a graduation rate of 108.3 percent for the 2001-2002 school year. Graduation rates (until 2002-2003) were calculated by dividing the number of graduates (regular diploma recipients) by the number of 12th grade students that were enrolled on the last day of school. Students receiving Certificates of Attendance are not counted as graduates but are counted in the denominator if they were enrolled on the last day.

Table 19
Aleut Region Graduation Rates
2001-2002 School Year

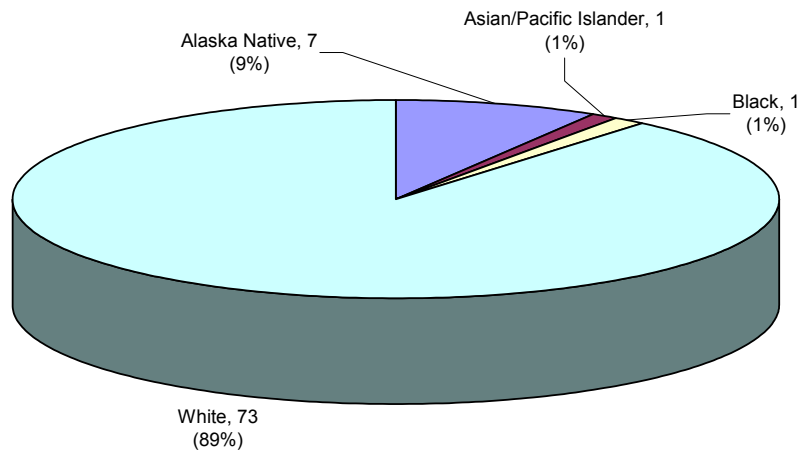
District	School Name	Alaska Natives			All Other Students			Total Enrollment	Total Graduates
		Enrollment	Graduates	% Graduates	Enrollment	Graduates	% Graduates		
Aleutian Region	Adak School	1	0	0.0	2	2	100.0	3	2
Aleutian Region	Yakov E. Netsvetov School	1	2	200.0	0	0	na	1	2
Aleutians East	Aleutians East Correspondence	0	0	na	1	0	0.0	1	0
Aleutians East	Akutan School	3	3	100.0	0	0	na	3	3
Aleutians East	False Pass School	0	0	na	0	1	na	0	1
Aleutians East	King Cove School	13	13	100.0	1	1	100.0	14	14
Aleutians East	Sand Point School	5	4	80.0	0	0	na	5	4
Pribilof	St. George School	1	0	0.0	0	0	na	1	0
Pribilof	St. Paul School	6	7	116.7	0	1	na	6	8
Unalaska	Unalaska Jr/Sr High School	2	1	50.0	20	21	105.0	22	22
Aleut Region Total		32	30	93.8	24	26	108.3	56	56

Source: State of Alaska Department of Education and Early Development, 2001- 2002 school year. Percent of graduates that are greater than 100 may be due to differing time frames for gathering enrollment and graduates data or students who graduate during the school year and are not counted enrolled on the last day of school.

Teacher Ethnicity

There were 82 teachers in the Aleut region schools for the 2002-2003 school year. Seven teachers were Alaska Native.

Figure 14
Aleut Region Teacher Ethnicity
2002-2003 School Year



Source: State of Alaska Department of Education and Early Development.