

Alaska Native K-12 Education Indicators

Ahtna

***Prepared for:
First Alaskans Institute
Alaska Native Policy Center***

Prepared by:



Juneau Anchorage

***This document contains pages 35 through 40 of the full report.
Please visit <http://www.firstalaskans.org>
for a full copy of the report.***

***October 2003
Second Printing March 2004***

Ahtna Region

Population

Communities included in the Ahtna region for determining population are those communities served by the Copper River Schools and the Denali Borough Schools districts. Communities are as follows:

| | |
|-------------------|--------------------|
| Anderson city | Kenny Lake CDP |
| Cantwell CDP | McCarthy CDP |
| Chisana CDP | McKinley Park CDP |
| Chistochina CDP | Mendeltna CDP |
| Chitina CDP | Nelchina CDP |
| Copper Center CDP | Paxson CDP |
| Copperville CDP | Silver Springs CDP |
| Ferry CDP | Slana CDP |
| Gakona CDP | Tazlina CDP |
| Glennallen CDP | Tolsona CDP |
| Gulkana CDP | Tonsina CDP |
| Healy CDP | Willow Creek CDP |

Note: CDP is the U.S. Census Bureau abbreviation for Census Designated Place.

Less than 4 percent of the Ahtna region population was identified as Alaska Native Alone or in combination with some other race for Census 2000. The Alaska Native population is greater than shown in the following table, but Census 2000 sampling and nonreleasable data for communities with small populations causes an undercount of the actual population.

Table 10
Ahtna Region Demographics Profile

| Ahtna Region Demographics Summary | | | | |
|-----------------------------------|------------------|---------|--|---------|
| | Total Population | | Alaska Native Alone or in combination with some other race | |
| | Number | Percent | Number | Percent |
| Population | 4,726 | | 176 | |
| Gender | | | | |
| Male | 2,612 | 55.3 | 85 | 48.3 |
| Female | 2,114 | 44.7 | 91 | 51.7 |
| Age | | | | |
| < 5 years | 290 | 6.1 | 16 | 9.1 |
| 5 - 14 | 803 | 17.0 | 45 | 25.6 |
| 15 - 19 | 383 | 8.1 | 20 | 11.4 |
| 20 - 34 | 728 | 15.4 | 27 | 15.3 |
| 35 - 44 | 902 | 19.1 | 19 | 10.8 |
| 45 - 64 | 1,312 | 27.8 | 31 | 17.6 |
| 65 or more years | 308 | 6.5 | 18 | 10.2 |

Source: U.S. Census Bureau, Census 2000. Total population includes Alaska Natives and in combination with some other race.

The percentage of the Alaska Native population that is school age (ages 5 through 19) is much larger than the percent of Ahtna's population that is school age, 37 percent compared to 25.1 percent.

Enrollment by School District

There are two school districts and 12 schools in the Ahtna region. Native enrollment for the 2002-2003 school year was an average of 21.7 percent of the 1,000 total enrollment.

Table 11
Ahtna Region Enrollment by School
2002-2003 School Year

| District | School | Enrollment | | | | |
|---------------------------|-------------------------------------|------------|----------------|-----------|-------------------|-------|
| | | Native | Percent Native | All Other | Percent All Other | Total |
| Copper River Schools | <i>Chistochina School</i> | 8 | 88.9 | 1 | 11.1 | 9 |
| | <i>Copper Center School</i> | 33 | 63.5 | 19 | 36.5 | 52 |
| | <i>Copper River Corresp.</i> | 5 | 3.6 | 135 | 96.4 | 140 |
| | <i>Gakona Elementary</i> | 12 | 70.6 | 5 | 29.4 | 17 |
| | <i>Glennallen Elementary</i> | 28 | 21.5 | 102 | 78.5 | 130 |
| | <i>Glennallen Jr/Sr High School</i> | 74 | 39.4 | 114 | 60.6 | 188 |
| | <i>Kenny Lake School</i> | 25 | 20.5 | 97 | 79.5 | 122 |
| | <i>Slana School</i> | 2 | 8.3 | 22 | 91.7 | 24 |
| Denali Borough Schools | <i>Anderson School</i> | 8 | 9.8 | 74 | 90.2 | 82 |
| | <i>Cantwell School</i> | 9 | 39.1 | 14 | 60.9 | 23 |
| | <i>Denali Correspondence School</i> | 2 | 14.3 | 12 | 85.7 | 14 |
| | <i>Tri-Valley School</i> | 11 | 5.5 | 188 | 94.5 | 199 |
| Ahtna Region Total | | 217 | 21.7 | 783 | 78.3 | 1,000 |

Source: State of Alaska Department of Education and Early Development.

List of Schools Making AYP

The following schools made Adequate Yearly Progress for the school year 2002-2003:

| District | School |
|------------------------|---|
| Copper River Schools | <i>Chistochina School - Glennallen</i> |
| | <i>Copper Center School - Copper Center</i> |
| | <i>Gakona Elementary - Gakona</i> |
| | <i>Glennallen Elementary - Glennallen</i> |
| | <i>Kenny Lake School - Copper Center</i> |
| | <i>Slana School - Slana</i> |
| Denali Borough Schools | <i>Anderson School - Anderson</i> |
| | <i>Cantwell School - Cantwell</i> |
| | <i>Denali Correspondence School - Healy</i> |
| | <i>Tri-Valley School - Healy</i> |

List of Schools Not Making AYP

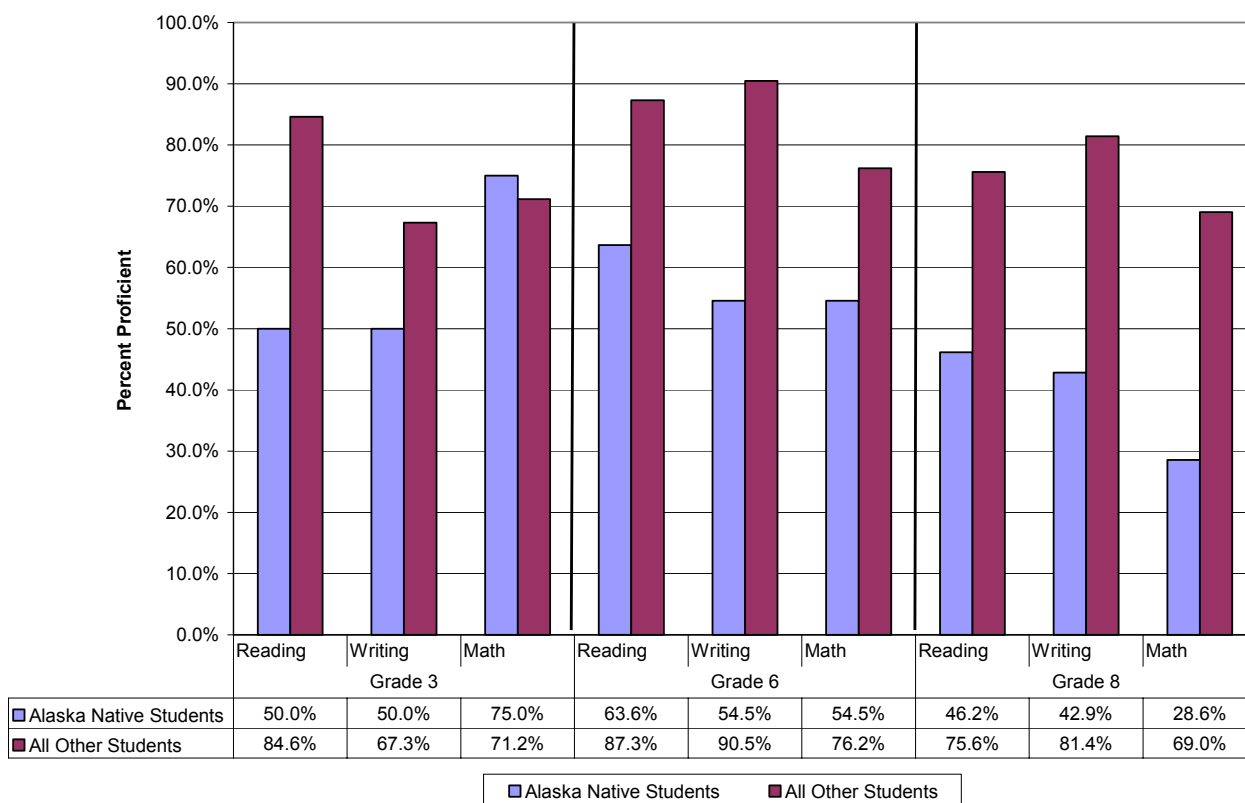
The following schools did not make Adequate Yearly Progress for the school year 2002-2003:

| District | School | Reason for not Meeting AYP |
|----------------------|---|--|
| Copper River Schools | Copper River Corresp. - Glennallen | Participation rate for school as a whole and for Caucasian students. |
| | Glennallen Jr/Sr High School - Glennallen | 1. Language Arts scores for Alaska Native and students with disabilities. 2. Math scores for students with disabilities. |

Education Benchmarks

School districts included for the Ahtna region are the Copper River Schools and the Denali Borough Schools. Alaska Gateway Schools have some students residing in the Ahtna geographic region, but these students are all included in the Doyon region indicators.

Figure 9
Ahtna Region Benchmark Results
2002-2003 School Year



Source: State of Alaska Department of Education and Early Development. Missing benchmarks are due to confidential data elements. Due to the suppression and/or absence of data from some schools, benchmark results may not accurately represent the entire region.

Attendance Rates

The Ahtna region schools had average attendance rates of 93.5 percent for the school year 2001-2002. (See Table 12.) DEED measures attendance rates by taking the sum of all days present for all students in a school for the year and dividing this by the sum of all days present and all days absent for all students in a school for the year. The information is not available by ethnicity and is not yet available for the 2002-2003 school year.

Table 12
Ahtna Region Attendance Rates
2001-2002 School Year

| District Name | School Name | Attendance Rate |
|-----------------------------|------------------------------|-----------------|
| Copper River | Chistochina School | 78.8% |
| Copper River | Copper Center School | 85.6% |
| Copper River | Copper River Corresp. | 100.0% |
| Copper River | Glennallen Elementary | 91.8% |
| Copper River | Glennallen Jr/Sr High School | 95.4% |
| Copper River | Kenny Lake School | 91.8% |
| Copper River | Lottie Sparks Elementary | 92.3% |
| Copper River | Slana School | 78.3% |
| Denali | Anderson School | 93.0% |
| Denali | Cantwell School | 91.9% |
| Denali | Tri-Valley School | 93.5% |
| Ahtna Region Average | | 93.5% |

Source: State of Alaska Department of Education and Early Development, 2001-2002 school year.

Dropout Rates

A dropout is defined as a student who was enrolled in the school at some time during the school year and left the school at some time during that same school year. The dropout rate for Alaska Native students in the Ahtna region for grades 7 through 12 was 11.5 percent for the 2001-2002 school year. This compares to all other students in the Ahtna region who dropped out at a rate of 3.1 percent. Several regions' dropout rates appear low, and zero dropouts in a region are unlikely.

Table 13
Ahtna Region Dropout Rates for Grades 7 through 12
2001-2002 School Year

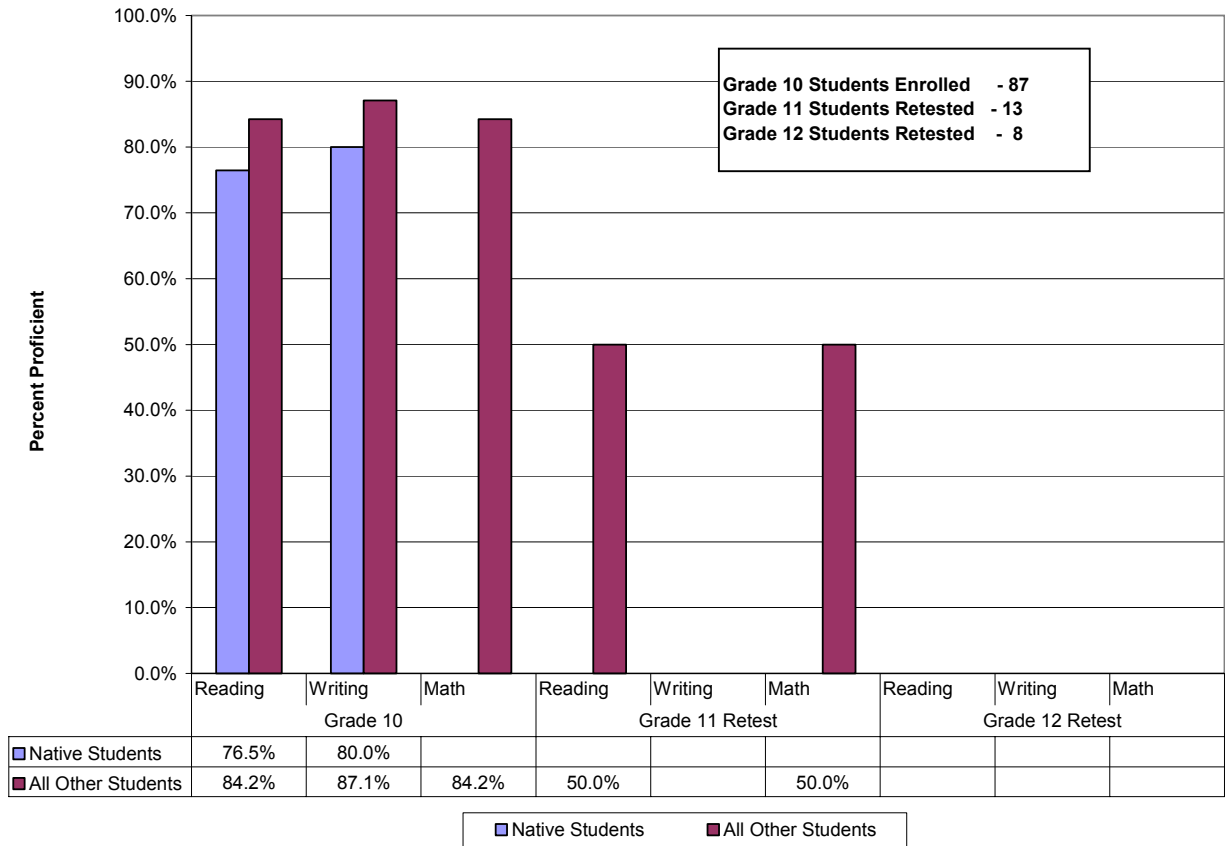
| District | School Name | Alaska Native | | | All Other Students | | | Total Enrollment | Total Dropouts | %Total Dropouts |
|---------------------------|------------------------------|---------------|-----------|-------------|--------------------|-----------|------------|------------------|----------------|-----------------|
| | | Enrollment | Dropouts | %Dropouts | Enrollment | Dropouts | %Dropouts | | | |
| Copper River | Chistochina School | 4 | 0 | 0.0 | 0 | 0 | na | 4 | 0 | 0.0 |
| Copper River | Copper River Corresp. | 11 | 5 | 45.5 | 59 | 6 | 10.2 | 70 | 11 | 15.7 |
| Copper River | Gakona Elementary | 1 | 0 | 0.0 | 1 | 0 | 0.0 | 2 | 0 | 0.0 |
| Copper River | Glennallen Jr/Sr High School | 62 | 7 | 11.3 | 134 | 3 | 2.2 | 196 | 10 | 5.1 |
| Copper River | Kenny Lake School | 19 | 0 | 0.0 | 39 | 0 | 0.0 | 58 | 0 | 0.0 |
| Copper River | Slana School | 0 | 0 | na | 8 | 0 | 0.0 | 8 | 0 | 0.0 |
| Denali | Anderson School | 1 | 0 | 0.0 | 30 | 1 | 3.3 | 31 | 1 | 3.2 |
| Denali | Cantwell School | 3 | 0 | 0.0 | 9 | 1 | 11.1 | 12 | 1 | 8.3 |
| Denali | Tri-Valley School | 3 | 0 | 0.0 | 108 | 1 | 0.9 | 111 | 1 | 0.9 |
| Ahtna Region Total | | 104 | 12 | 11.5 | 388 | 12 | 3.1 | 492 | 24 | 4.9 |

Source: State of Alaska Department of Education and Early Development, 2001- 2002 school year. Several regions' dropout rates appear low, and zero dropouts in a region are unlikely.

High School Graduation Qualifying Exams

Ahtna region high school graduation qualifying exam results were compiled for the ethnicities and schools that had releasable data. Some grade and subject data were not released. Due to the small number of students who retake the exam in the 11th and 12th grade, much of this data has been suppressed.

Figure 10
Ahtna Region High School Graduation Qualifying Exam Results
2002-2003 School Year



Source: State of Alaska Department of Education and Early Development. High school students are first offered the High School Graduation Qualifying Exam in the 10th grade. Students may retake the tests for the subjects in which they were not proficient in the 11th or 12th grade. Once a student passes the subject matter, they need not retake the exams. Exam results listed here are for the schools and ethnic categories for which data was released. The number of students retesting is based on the greatest number of students in a given subject matter.

Graduation Rates

Alaska Natives in the Ahtna geographic region graduated at the rate of 75 percent compared to all other ethnicities which had a graduation rate of 84.4 percent for the 2001-2002 school year. Graduation rates (until 2002-2003) were calculated by dividing the number of graduates (regular diploma recipients) by the number of 12th grade students that were enrolled on the last day of school. Students receiving Certificates of Attendance are not counted as graduates but are counted in the denominator if they were enrolled on the last day.

Table 14
Ahtna Region Graduation Rates
2001-2002 School Year

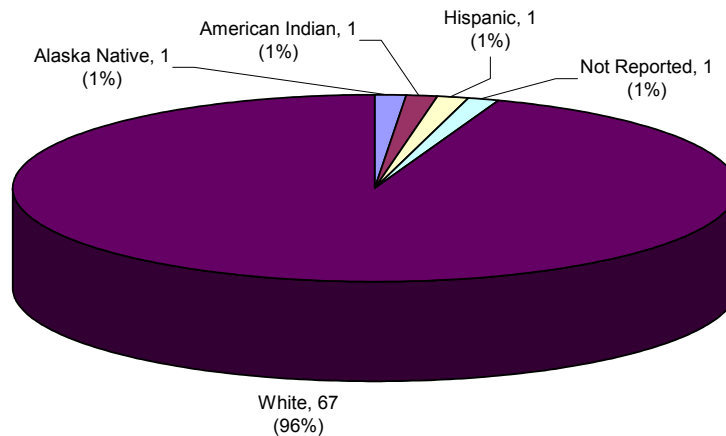
| District | School Name | Alaska Natives | | | All Other Students | | | Total Enrollment | Total Graduates |
|---------------------------|------------------------------|----------------|-----------|-------------|--------------------|-----------|-------------|------------------|-----------------|
| | | Enrollment | Graduates | % Graduates | Enrollment | Graduates | % Graduates | | |
| Copper River | Copper River Corresp. | 1 | 0 | 0.0 | 6 | 1 | 16.7 | 7 | 1 |
| Copper River | Glennallen Jr/Sr High School | 6 | 6 | 100.0 | 30 | 28 | 93.3 | 36 | 34 |
| Copper River | Kenny Lake School | 1 | 0 | 0.0 | 3 | 3 | 100.0 | 4 | 3 |
| Denali | Anderson School | 0 | 0 | na | 2 | 2 | 100.0 | 2 | 2 |
| Denali | Cantwell School | 0 | 0 | na | 4 | 1 | 25.0 | 4 | 1 |
| Denali | Tri-Valley School | 0 | 0 | na | 19 | 19 | 100.0 | 19 | 19 |
| Ahtna Region Total | | 8 | 6 | 75.0 | 64 | 54 | 84.4 | 72 | 60 |

Source: State of Alaska Department of Education and Early Development, 2001-2002 school year.

Teacher Ethnicity

There were 71 teachers in the Ahtna region schools for the 2002-2003 school year. One teacher was Alaska Native.

Figure 11
Ahtna Region Teacher Ethnicity
2002-2003



Source: State of Alaska Department of Education and Early Development.